



Bend-La Pine Schools

**FAMILY
HANDBOOK
& CALENDAR**

2020-21

Welcome to Bend-La Pine Schools



It is my honor as Bend-La Pine Schools' interim superintendent to welcome our students, families and staff to the 2020-21 school year.

While I am new to this role, I am a familiar face for many in our schools. I've spent the past 12 years serving in Bend-La Pine Schools, most recently as assistant superintendent. I have spent my career in public education, most of it here in Central Oregon.

This year will not be like any other that I've known in my more than 40 years in education. But I know that together, we can make it a meaningful year of growth and connections.

With so much changing in our world and our community, my goal is for our schools, as much as possible, to provide safe and secure learning spaces for our students and families. My goal as a leader is to help our schools continue to build upon our long history of excellence and to uphold our collective value of success for each student.

As educators, our role is to help students learn, to better understand the world and diverse people around them, and to foster collaboration, self-actualization, and a commitment to the common good. Those commitments will not change. Because of this global pandemic and health guidelines, many learning experiences are likely to look different than they did in the past. But much of what makes us Bend-La Pine Schools will remain the same:

- Our staff members care deeply about our students and are dedicated to serving them.
- We are committed to helping each and every student gain the knowledge, skills, and dispositions they need to be successful in whatever future they choose.

-The social and emotional safety of our students is a priority.

I hope you will take time to look through the pages of this calendar and find inspiration in the artwork created by our students. We asked them to share a photograph or piece of art with the theme #BLSproud, to highlight something they are proud of about their school or their school district. Their answers are heartwarming:

"Kids like to spread joy and help others."

"I am proud to be part of a school community that values our natural environment and teaches us how to become good stewards of the land."

"Our schools are open to diversity and different points of view."

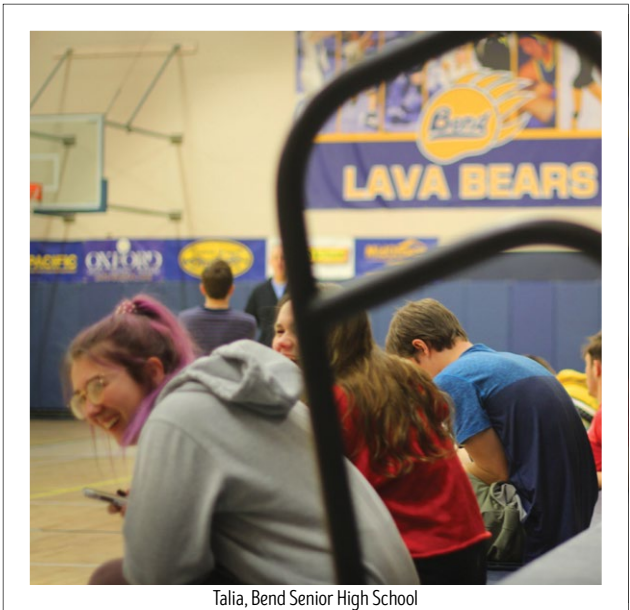
"What I learn at my school makes me feel strong and proud!"

I, too, am proud to be part of Bend-La Pine Schools and to help lead the district through this year of transition. I am proud of the tremendous work of our teachers, who are dedicated to helping students learn and connecting with them in whatever form that takes. I am proud of our support staff members who are working tirelessly to provide services for our students. I am proud to see our staff learn, change and grow as the world around us changes. I am proud to be a part of this team of incredible people every day. I am proud to be part of a district that values equity, providing each student with what they need to find success.

Finally, I am proud of our students, their courage, compassion, and creativity. Two of my five grandchildren are among our 18,000+ students. Ensuring that we provide the best educational experiences possible for them, as well as each and every one of our students, is what drives me every day.

Sincerely,

Lora Nordquist, Interim Superintendent



Talia, Bend Senior High School

Contents

Superintendent's Message	1
Mission and Beliefs	3
Board of Directors	4
Enrollment Information	5
School Schedules	6
Holidays and Breaks.....	6
School Meals	7
Emergency Information	7
Getting Involved.....	8
Volunteer Programs	8
Education Foundation	8
Instruction	8
Special Education	9
Contact Information	10
Rights and Responsibilities Handbook	35
Attendance and Absences	37
Illegal Acts and School Violations	38
Student Records	41

STAY UP-TO-DATE

As events and circumstances change, we are committed to keeping families informed. We share news and the latest information about Bend-La Pine Schools on our Return to School webpage:

<https://bit.ly/BLSreturn>



Thank you for your support!

Mission and Beliefs

“Educating each student to be a thriving citizen” ::::

MISSION STATEMENT

Bend-La Pine Schools, in partnership with our community, will prepare each student with the knowledge and skill, confidence and personal integrity to contribute as a thriving citizen in our ever-changing global society.

GLOBALLY COMPETITIVE, COLLEGE READY STUDENTS

More than 1,300 Bend-La Pine Schools students flipped their tassels in 2020, accepting high school diplomas and preparing for studies at prestigious universities and colleges around the world, or beginning post-high school training at hundreds of institutions.

CORE VALUES

World Class: Globally rigorous, relevant curriculum and instruction that inspire critical thinking, creativity, communication, and collaboration.

Students First: Decisions based on what is best for students.

Culture of Excellence: A pervasive expectation for excellence that drives opportunities for high achievement and growth for all.

Data Driven: Decisions based on the best information and practices available.

Positive Relationships: Interactions based on honesty, dignity, respect, and integrity.



Benjamin, Sky View Middle School, Sixth Grade

ABOUT US

2,023 employees

14 - Average years experience for teachers

82% - Of teachers hold a Masters degree or higher

2nd - Largest employer in Central Oregon

STUDENTS

18,500 - Students

33 - Schools and two charter schools

5th - Largest district in Oregon

4% - Of students are English Language Learners

33% - Students qualify as economically disadvantaged

36 - Languages spoken by students

\$200 Million - Operating budget

FISCALLY RESPONSIBLE

Bend-La Pine Schools has received the Certificate of Achievement for Excellence in Financial Reporting from the Government Finance Officers Association for 37 consecutive years, and has received the Certificate of Excellence in Financial Reporting from the Association of School Business Officials for 36 consecutive years. We value taxpayers' investment in our schools. In addition to placing CPAs in our lead fiscal positions, we hire an independent accounting firm to audit our financial records annually.

ADMINISTRATIVE POLICIES AND REGULATIONS

The Bend-La Pine Schools Board of Directors has established broad goals focused on student achievement and the creation of world-class schools. To ensure those goals are met, the board employs a governance model that identifies specific results, or “ends.” The board delegates responsibility to the superintendent, with support from a team of highly qualified professionals, to determine how those ends are achieved. By delegating this responsibility to the superintendent and then evaluating the end results, the board is able to focus on its broad goals and provide visionary leadership.

To guide their efforts in achieving the ends identified by the board, the superintendent and Cabinet team have adopted a comprehensive set of Administrative Policies and Regulations, which can be found on our website, www.bend.k12.or.us.



Bend-La Pine Schools Board of Directors

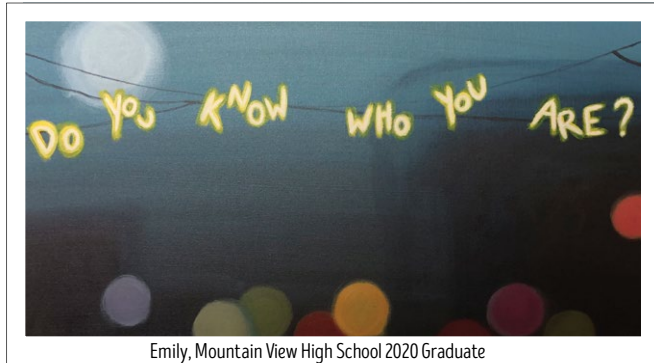
SCHOOL BOARD MEETINGS

The Bend-La Pine Schools Board of Directors typically meets on the second and fourth Tuesday of each month. Regular meetings are held at 5:30 p.m. at the Education Center, 520 NW Wall Street, Bend, Oregon, in Room 314, unless otherwise noted.

Board meetings are open to the public and provide an opportunity for public input. Meeting schedules, agendas and minutes of previous meetings are posted on our website at www.bend.k12.or.us.

BOARD GOALS

- Goal 1:** All students receive an excellent education and are prepared for their future.
- Goal 2:** All students demonstrate personal integrity and responsible citizenship.
- Goal 3:** All schools provide safe, nurturing environments conducive to learning.
- Goal 4:** The school district operates with the highest level of fiscal stewardship while maintaining effective and efficient practices to meet Board goals.



Emily, Mountain View High School 2020 Graduate

CAPITAL IMPROVEMENTS AND PLANNING

Thanks to voter support of our 2017 construction bond request, Bend-La Pine Schools has many projects in the works, including the construction of two new schools and more than 150 maintenance and preservation projects throughout the district. These much-needed projects will help accommodate the district's ever-increasing student population growth and will benefit student learning and protect our community's investment in schools and facilities. These projects also support economic growth and prosperity and go far to protect our quality of life now and for future generations. Learn more about the bond and all of the associated projects at www.bend.k12.or.us/2017bond.

THE PROJECTS INCLUDE:

Neighborhood Schools in High-Growth Areas: Bend-La Pine Schools has constructed one elementary school, North Star Elementary School, which opened in the fall of 2019. A new high school in south east Bend is under construction to meet current and anticipated future overcrowding caused by decades of continuing enrollment growth.

Maintenance and Preservation at Existing Buildings: Many of the district's schools are decades old, and projects are proposed to modernize these facilities. The bond funding will allow the district to replace leaking roofs and windows, and upgrade heating, ventilation, electrical, and plumbing systems. The bond will also allow Bend-La Pine Schools to make money-saving energy improvements to boilers, HVAC and lighting systems to many of its schools and facilities.

Classroom Additions and Modernization: Many of Bend-La Pine Schools' classrooms were constructed decades ago. The bond will allow Bend-La Pine Schools to add and modernize classrooms and support spaces at existing schools, including instructional spaces for science, technology, engineering, arts, mathematics and physical education.

Safety and Technology Improvements: The bond projects are making health and life safety upgrades including cameras, intercoms and entrance redesign to provide improved visibility of visitor access. We are improving technology wiring and cabling to ensure students throughout the district have equal access to technology resources.



From left to right: Back row; Melissa Barnes Dholakia, Caroline Skidmore, Dr. Stuart Young, Front row; Amy Tatom, Julie Craig, Shimiko Montgomery and Carrie Douglass.

Get in touch with the school board by visiting www.bend.k12.or.us or send an email to school-board@bend.k12.or.us

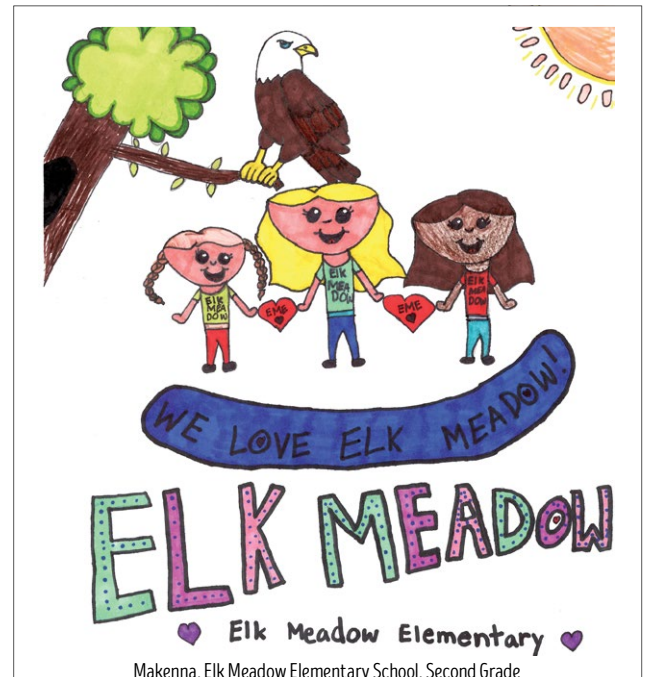
Essential Enrollment Information

Holidays and Breaks

September 7	Labor Day
September 9	1st Day of School, Grades 1-9, K staggered start
September 10	1st Day of School, Grades 10-12, K staggered start
November 11	Veterans Day Holiday
November 23-27	Thanksgiving Break
December 21-January 1	Winter Break
January 18	Martin Luther King Jr. Day
February 15	Presidents Day
March 22-26	Spring Break
May 31	Memorial Day
June 17	Last Day of School

SCHOOL CLOSURES

The school year calendar is designed to meet instructional hour requirements set by the State of Oregon. It does not include extra days to make up for extended school closures resulting from circumstances such as inclement weather or emergencies. Accordingly, the school calendar is subject to change during the school year as circumstances warrant. Any updates to the school calendar can be found at our website, www.bend.k12.or.us.



Boy Scouts and other designated youth groups.

Equal employment opportunities will be provided to all qualified individuals with a disability as defined by the Americans With Disabilities Amendments Act (ADAA). Bend-La Pine Schools will make reasonable modifications to policies, practices and procedures to ensure equal access to individuals with disabilities.

Additional information regarding accessibility, including requests, grievances, and resources can be found on Bend-La Pine Schools' website at www.bend.k12.or.us.

Parents/guardians may inquire about equal educational opportunities that relate to their student by contacting the Teaching and Learning Department at 541-355-1060 or the Special Education Director, 520 NW Wall St., Bend, Oregon 97703.

School Schedules

Learn about your school's start time by contacting your local school.

SCHOOL IMPROVEMENT WEDNESDAY

Allows Time for Teacher Training and Professional Development

Beginning on Wednesday, September 16 students will be released early each Wednesday to allow for teacher collaboration, training, and enrichment designed to improve student learning and achievement district-wide.

Meeting weekly allows teachers and school leaders time for collaboration and professional growth. When teachers have the chance to discuss effective teaching methods, cooperatively design teaching materials, and coach one another, our schools make significant improvements.

Providing consistent school improvement time is advantageous for students as it results in fewer interruptions of the school year. Schools work with our partners in the community to provide after-school opportunities for families on School Improvement Wednesdays. Please contact your school for more information.

School Meals

Breakfast

- \$2 Elementary Students
- \$2.25 Middle and High Students
- \$2.75 Adults

(Free for students who qualify for free or reduced benefits.)

Lunch

- \$3 Elementary Students
- \$3.25 Middle and High Students
- \$4.25 Adults

(Free for students who qualify for free or reduced benefits.)

FREE AND REDUCED PRICE MEALS

Families can save nearly \$900 per child per year if students qualify for free or reduced price meals, which include breakfast and lunch. Applications are available after August 15 at our website, www.bend.k12.or.us, at the Nutrition Services Office, at 520 NW Wall St. in Bend, and at your child's school.

Applications are accepted at any time during the school year. A new application must be completed each year, and only forms for the current year are accepted. Additional information about the program can be found on our website, www.bend.k12.or.us, or by calling the Nutrition Services Department at 541-355-1150.

ONLINE MEAL PAYMENTS

Beginning on September 6, families can deposit funds online to their student's school meal account electronically at <https://blpay.bend.k12.or.us>. Once registered with BLPay,

automatic email notifications will be sent to you when your student's meal account balance is low.

STUDENTS AND FAMILIES IN NEED

Family Access Network (FAN) advocates are connected to each school in Bend-La Pine Schools. Advocates can assist students and families with basic needs and help make connections to outside partners and social services. Contact your home school for FAN services.

Bend-La Pine Schools employs a homeless liaison, in accordance with the McKinney-Vento Act. Assistance is available for immediate enrollment, free meals program and transportation to a student's school of origin. Contact 541-355-1037.

Emergency and Safety Information

DELAYS, CLOSURES AND EMERGENCIES

Severe weather or other emergencies may cause changes to the school day. When this happens, schools may need to close, start late, or dismiss early. Plan in advance for such emergencies. Please ensure that your child's school has your family's current emergency contact information.

We understand that decisions about school schedules and bus route changes have an impact on our families. We appreciate your patience during these situations. While we know that our students and families are best served when school is in session, our primary concern during an emergency is the safety of our students and staff.

Typically, decisions regarding weather-related schedule changes are made in the early morning, before school, when current weather conditions can be assessed. Once the decision to delay and/or close has been made, the information will be communicated immediately via local media outlets, social media pages and our website.

In the case of any emergency or school delay, we will also record a voice message on our on-demand phone lines.

Simply call 541-323-7669 for a message in English or 541-355-0044 for a message in Spanish with the latest information.

If you'd like to receive emergency and severe weather alert text messages, register for Bend-La Pine Schools' BLConnect text messaging service at <http://connect.bend.k12.or.us>.

HEALTHY AND SAFE SCHOOLS PLAN

In compliance with OAR 581-022-2223, Bend-La Pine Schools has established a Healthy and Safe Schools Plan for



Getting Involved

DISTRICT NEWS



**THE EDUCATION FOUNDATION FOR
BEND-LA PINE SCHOOLS**

- To increase educational and extra-curricular opportunities for all district students
- To encourage creative and innovative curricula for STEM, art, music and wellness programs

Since 1988, the Education Foundation has invested more than \$1.6 million dollars into our local public schools. For more information, visit <http://engagedminds.org> Thank YOU to our wonderful community business partners and individual supporters, we work together to enhance K-12 education in Bend, La Pine and Sunriver.



ELEMENTARY INSTRUCTION

MIDDLE SCHOOL INSTRUCTION

To meet these needs, middle schools strive to provide high academic expectations for all students, to develop positive attitudes toward learning and future readiness, and to transition successfully between elementary and high school.

HIGH SCHOOL INSTRUCTION

Students also have the opportunity to earn an Honors, Advanced Placement or International Baccalaureate diploma by taking advanced-level courses that demonstrate the ability to succeed in a rigorous curriculum. High schools also offer a wide range of academic clubs and co-curricular activities from music to drama and sports.



Serafina R. E. Jewell Elementary School

SPECIAL EDUCATION

Bend-La Pine Schools offers a variety of individualized programs and services to meet the unique gifts and challenges of the students in our district. We provide a full continuum of special education services and placements for qualifying students ages 5-21. Most of the services are offered in students' neighborhood schools and general education classrooms. District and off campus alternative programs are also available.

For more information about the range of services offered through the Special Programs Department, call 541-355-1060.

LEARNING CHOICES

We maximize achievement by encouraging students of all ages to find the learning environment that best suits their interests. By customizing each student's curriculum to match his or her particular strengths, Bend-La Pine Schools helps students build a strong foundation for higher education and future careers.

From school-wide technology or storyline teaching methods at the elementary level, to exploratory learning and Talented and Gifted (TAG) options at the middle level, to Career-Technical and Advanced Placement offerings at the high school level – we have something to meet every student's expectations and learning style.

Athletics and Activities

PHYSICALS

Students who participate in extracurricular sports must complete a physical exam in grades 9 and 11 or if this is their first time participating with a Bend-La Pine Schools team. All physicals need to be completed prior to the sports season and not before May 1 of the summer before the current academic year.

Parents should be sure to bring a copy of the OSAA School Sports Pre-Participation Examination their student's appointment.



Morgan, Bend Senior High School



Heather, Mountain View High School, Eleventh Grade

These forms can be found on your school's athletics webpage for download or your Athletics and Activities Office.

Reminder: When you have completed the sports physical, please return it to your school's Athletics and Activities office.

WELLNESS CHECK

As an advocate for your children, parents of athletes and non-athletes alike are encouraged to also consider an annual Wellness Check – a complete medical examination and screen for common health issues.

Wellness Check visits are vital to your child's healthy growth and development. Physicians suggest adolescents should have regular wellness visits to make sure they are developing at the expected pace and continue to remain healthy.

During these visits, you'll have the opportunity to discuss your child's growth, development, behavior and other health issues with the goal of preventing illness and promoting the best possible health for your student.

We encourage you to consider discussing the possibility of adding a Wellness Check to your next sports physical, with your physician.

Note: If you choose a Wellness Check in place of a physical, you must complete the physical form with your physician to be eligible for OSAA athletics.

CODE OF CONDUCT

Any student who participates in school-sponsored athletics or activities must agree to abide by the School District Administrative Policies and Rules, Code Of Conduct, building rules and team participation/training regulations. All students who participate in athletics and extracurricular activities are expected to be positive role models for other students and members of the community at all times. This signed contract shall be in effect at all times during the contract period. "At all times" means 24 hours a day, every day of the week whether at school or away from school. The contract will be in effect from the beginning of the OSAA calendar (see www.osaa.org annual dates) and conclude with the last day of high school.

School Contact Information

Elementary Schools

Amity Creek at Thompson
437 NW Wall St., Bend
541-355-2800
www.bend.k12.or.us/Amity

Bear Creek
51 SE 13th St., Bend
541-355-1400
www.bend.k12.or.us/BearCreek

Buckingham
62560 Hamby Road, Bend
541-355-2600
www.bend.k12.or.us/Buckingham

Elk Meadow
60880 Brookwood Blvd., Bend
541-355-1500
www.bend.k12.or.us/ElkMeadow

Ensworth
2150 NE Daggett Lane, Bend
541-355-1600
www.bend.k12.or.us/Ensworth

High Lakes
2500 NW High Lakes Loop, Bend
541-355-1700
www.bend.k12.or.us/HighLakes

Highland at Kenwood
701 NW Newport Ave., Bend
541-355-1900
www.bend.k12.or.us/Highland

Juniper
1300 NE Norton Ave., Bend
541-355-1800
www.bend.k12.or.us/Juniper

La Pine
51615 Coach Road, La Pine
541-355-8000
www.bend.k12.or.us/
LaPineElementary

Lava Ridge
20805 Cooley Road, Bend
541-355-2400
www.bend.k12.or.us/LavaRidge

North Star
63567 Brownrigg Lane, Bend
541-355-2300
www.bend.k12.or.us/NorthStar

Pine Ridge
19840 Hollygrape St., Bend
541-355-2700
www.bend.k12.or.us/PineRidge

Ponderosa
3790 NE Purcell Blvd., Bend
541-355-4300
www.bend.k12.or.us/Ponderosa

R. E. Jewell
20550 Murphy Road, Bend
541-355-2100
www.bend.k12.or.us/Jewell

Rosland
52350 Yaeger Way, La Pine
541-355-8100
www.bend.k12.or.us/Rosland

Silver Rail
61530 SE Stone Creek St., Bend
541-355-2900
www.bend.k12.or.us/SilverRail

Three Rivers (K-8)
56900 Enterprise Dr., Sunriver
541-355-3000
www.bend.k12.or.us/ThreeRivers

Westside Village at Kingston (K-8)
1101 NW 12th St., Bend
541-355-2000
www.bend.k12.or.us/Westside

William E. Miller
300 NW Crosby Drive, Bend
541-355-2500
www.bend.k12.or.us/Miller

Middle Schools

Cascade
19619 Mountaineer Way, Bend
541-355-7000
www.bend.k12.or.us/Cascade

High Desert
61000 Diamondback Lane, Bend
541-355-7200
www.bend.k12.or.us/HighDesert

La Pine
16360 First St., La Pine
541-355-8200
www.bend.k12.or.us/LaPine
Middle

Pacific Crest
3030 NW Elwood Lane, Bend
541-355-7800
www.bend.k12.or.us/PacificCrest

Pilot Butte
1501 NE Neff Road, Bend
541-355-7400
www.bend.k12.or.us/PilotButte

Realms
63175 OB Riley Road, Bend
541-322-5323
www.bend.k12.or.us/Realms

Sky View
63555 18th St., Bend
541-355-7600
www.bend.k12.or.us/SkyView

High Schools

Bend Senior
230 NE 6th St., Bend
541-355-3700
www.bend.k12.or.us/BendHigh

Bend Tech Academy at Marshall
1291 NE 5th St., Bend
541-355-3500
www.bend.k12.or.us/Marshall

La Pine
51633 Coach Road, La Pine
541-355-8400
www.bend.k12.or.us/LaPineHigh

Mountain View
2755 NE 27th St., Bend
541-355-4400
www.bend.k12.or.us/
MountainView

Realms
20730 Brinson Blvd, Bend
541-355-5500
www.bend.k12.or.us/RealmsHigh

Skyline
20730 Brinson Blvd, Bend
541-355-5400
www.bend.k12.or.us/Skyline

Summit
2855 NW Clearwater Dr., Bend
541-355-4000
www.bend.k12.or.us/Summit

District Contact Information

Administration

Bend-La Pine Schools
Information Line
541-355-1000

Business Office/Payroll
541-355-1200

**Human Resources/
Employment**
541-355-1100

Information Technology
541-355-1200

Maintenance
541-355-4700

Nutrition Services
541-355-1150

Special Programs
541-355-1060

Teaching and Learning
541-355-1020

Transportation - Bend
541-355-5700

Transportation - La Pine
541-355-5750



Paige, Silver Rail Elementary School, Third Grade

SEPTEMBER

LOGAN

BEND SENIOR HIGH SCHOOL

NINTH GRADE

My photo of the leaf with raindrops on it symbolizes all of the students and teachers and how our Three Rivers' community is all together on our own little leaf. The picture of the flowers standing out from the rest reminds me of how we stand out and how I'm proud to be a part of this school district.

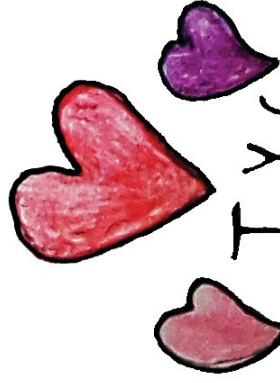


Sunday	Monday	Tuesday	Wednesday	Thursday	Friday	Saturday																																																	
<div> <div>AUGUST 2020</div> <table> <tr><td>S</td><td>M</td><td>T</td><td>W</td><td>T</td><td>F</td><td>S</td></tr> <tr><td>2</td><td>3</td><td>4</td><td>5</td><td>6</td><td>7</td><td>1</td></tr> <tr><td></td><td></td><td></td><td></td><td></td><td></td><td>8</td></tr> <tr><td>9</td><td>10</td><td>11</td><td>12</td><td>13</td><td>14</td><td>15</td></tr> <tr><td>16</td><td>17</td><td>18</td><td>19</td><td>20</td><td>21</td><td>22</td></tr> <tr><td>23</td><td>24</td><td>25</td><td>26</td><td>27</td><td>28</td><td>29</td></tr> <tr><td>30</td><td>31</td><td></td><td></td><td></td><td></td><td></td></tr> </table> </div>							S	M	T	W	T	F	S	2	3	4	5	6	7	1							8	9	10	11	12	13	14	15	16	17	18	19	20	21	22	23	24	25	26	27	28	29	30	31					
S	M	T	W	T	F	S																																																	
2	3	4	5	6	7	1																																																	
						8																																																	
9	10	11	12	13	14	15																																																	
16	17	18	19	20	21	22																																																	
23	24	25	26	27	28	29																																																	
30	31																																																						
	Labor Day Holiday																																																						
6	7																																																						
13	14	15	16	17	18	19																																																	
	1st Day of School		School Improvement																																																				
20	21	22	23	24	25	26																																																	
			School Improvement																																																				
27	28	29	30	<div> <div>OCTOBER 2020</div> <table> <tr><td>S</td><td>M</td><td>T</td><td>W</td><td>T</td><td>F</td><td>S</td></tr> <tr><td></td><td></td><td></td><td></td><td>1</td><td>2</td><td>3</td></tr> <tr><td>4</td><td>5</td><td>6</td><td>7</td><td>8</td><td>9</td><td>10</td></tr> <tr><td>11</td><td>12</td><td>13</td><td>14</td><td>15</td><td>16</td><td>17</td></tr> <tr><td>18</td><td>19</td><td>20</td><td>21</td><td>22</td><td>23</td><td>24</td></tr> <tr><td>25</td><td>26</td><td>27</td><td>28</td><td>29</td><td>30</td><td>31</td></tr> </table> </div>			S	M	T	W	T	F	S					1	2	3	4	5	6	7	8	9	10	11	12	13	14	15	16	17	18	19	20	21	22	23	24	25	26	27	28	29	30	31							
S	M	T	W	T	F	S																																																	
				1	2	3																																																	
4	5	6	7	8	9	10																																																	
11	12	13	14	15	16	17																																																	
18	19	20	21	22	23	24																																																	
25	26	27	28	29	30	31																																																	

OCTOBER

ROWAN
PACIFIC CREST MIDDLE SCHOOL
SIXTH GRADE

I am proud to be part of a great community. It feels like a big family. BLS kids like to spread joy and help others. The sparrow in the background represents the Sparrow Club, a group that loves helping kids in need.



• Love • Joy • Community •

Sunday	Monday	Tuesday	Wednesday	Thursday	Friday	Saturday
<div> <div>SEPTEMBER 2020</div> <div> <div>S</div> <div>M</div> <div>T</div> <div>W</div> <div>T</div> <div>F</div> <div>S</div> </div> <div> <div>1</div> <div>2</div> <div>3</div> <div>4</div> <div>5</div> <div>6</div> <div>7</div> </div> <div> <div>6</div> <div>7</div> <div>8</div> <div>9</div> <div>10</div> <div>11</div> <div>12</div> </div> <div> <div>13</div> <div>14</div> <div>15</div> <div>16</div> <div>17</div> <div>18</div> <div>19</div> </div> <div> <div>20</div> <div>21</div> <div>22</div> <div>23</div> <div>24</div> <div>25</div> <div>26</div> </div> <div> <div>27</div> <div>28</div> <div>29</div> <div>30</div> </div> </div>						
<div> <div>NOVEMBER 2020</div> <div> <div>S</div> <div>M</div> <div>T</div> <div>W</div> <div>T</div> <div>F</div> <div>S</div> </div> <div> <div>1</div> <div>2</div> <div>3</div> <div>4</div> <div>5</div> <div>6</div> <div>7</div> </div> <div> <div>8</div> <div>9</div> <div>10</div> <div>11</div> <div>12</div> <div>13</div> <div>14</div> </div> <div> <div>15</div> <div>16</div> <div>17</div> <div>18</div> <div>19</div> <div>20</div> <div>21</div> </div> <div> <div>22</div> <div>23</div> <div>24</div> <div>25</div> <div>26</div> <div>27</div> <div>28</div> </div> <div> <div>29</div> <div>30</div> </div> </div>						
4	5	6	School Improvement 7			
11	12	13	School Improvement 14	15	16	17
18	19	20	School Improvement 21	22	23	24
25	26	27	No School- All Elementary School Improvement 28	No School- All Elementary and Middle Schools 29	No School- All Elementary, Middle Schools, Marshall & Skyline 30	31

NOVEMBER

MIRANDA
WESTSIDE VILLAGE MAGNET
AT KINGSTON SCHOOL
EIGHTH GRADE

My painting represents the natural beauty of Central Oregon. I have been able to explore and appreciate our region thanks to my experiences at Westside Village Magnet School. I am proud to be part of a school community that values our natural environment and teaches us how to become good stewards of the land.

Sunday	Monday	Tuesday	Wednesday	Thursday	Friday	Saturday																																																																																				
1	2	3	School Improvement 4	5	6	7																																																																																				
8	9	10	Veterans Day Holiday - No School 11	12	13	14																																																																																				
15	16	17	School Improvement 18	19	20	21																																																																																				
22	23	24	Thanksgiving Break 25	Thanksgiving Break 26	Thanksgiving Break 27	28																																																																																				
29	30	<div><div>OCTOBER 2020</div><table><tr><td>S</td><td>M</td><td>T</td><td>W</td><td>T</td><td>F</td><td>S</td></tr><tr><td></td><td></td><td></td><td></td><td>1</td><td>2</td><td>3</td></tr><tr><td>4</td><td>5</td><td>6</td><td>7</td><td>8</td><td>9</td><td>10</td></tr><tr><td>11</td><td>12</td><td>13</td><td>14</td><td>15</td><td>16</td><td>17</td></tr><tr><td>18</td><td>19</td><td>20</td><td>21</td><td>22</td><td>23</td><td>24</td></tr><tr><td>25</td><td>26</td><td>27</td><td>28</td><td>29</td><td>30</td><td>31</td></tr></table></div> <div><div>DECEMBER 2020</div><table><tr><td>S</td><td>M</td><td>T</td><td>W</td><td>T</td><td>F</td><td>S</td></tr><tr><td></td><td></td><td></td><td></td><td>1</td><td>2</td><td>3</td></tr><tr><td>6</td><td>7</td><td>8</td><td>9</td><td>10</td><td>11</td><td>12</td></tr><tr><td>13</td><td>14</td><td>15</td><td>16</td><td>17</td><td>18</td><td>19</td></tr><tr><td>20</td><td>21</td><td>22</td><td>23</td><td>24</td><td>25</td><td>26</td></tr><tr><td>27</td><td>28</td><td>29</td><td>30</td><td>31</td><td></td><td></td></tr></table></div>					S	M	T	W	T	F	S					1	2	3	4	5	6	7	8	9	10	11	12	13	14	15	16	17	18	19	20	21	22	23	24	25	26	27	28	29	30	31	S	M	T	W	T	F	S					1	2	3	6	7	8	9	10	11	12	13	14	15	16	17	18	19	20	21	22	23	24	25	26	27	28	29	30	31		
S	M	T	W	T	F	S																																																																																				
				1	2	3																																																																																				
4	5	6	7	8	9	10																																																																																				
11	12	13	14	15	16	17																																																																																				
18	19	20	21	22	23	24																																																																																				
25	26	27	28	29	30	31																																																																																				
S	M	T	W	T	F	S																																																																																				
				1	2	3																																																																																				
6	7	8	9	10	11	12																																																																																				
13	14	15	16	17	18	19																																																																																				
20	21	22	23	24	25	26																																																																																				
27	28	29	30	31																																																																																						

DECEMBER

MORGAINE
MOUNTAIN VIEW HIGH SCHOOL
ELEVENTH GRADE

My art shows expression of individuality that I feel is growing in our schools. It shows how our schools are open to diversity and different points of view and I am proud to be part of a school district that represents the uniqueness of its students.

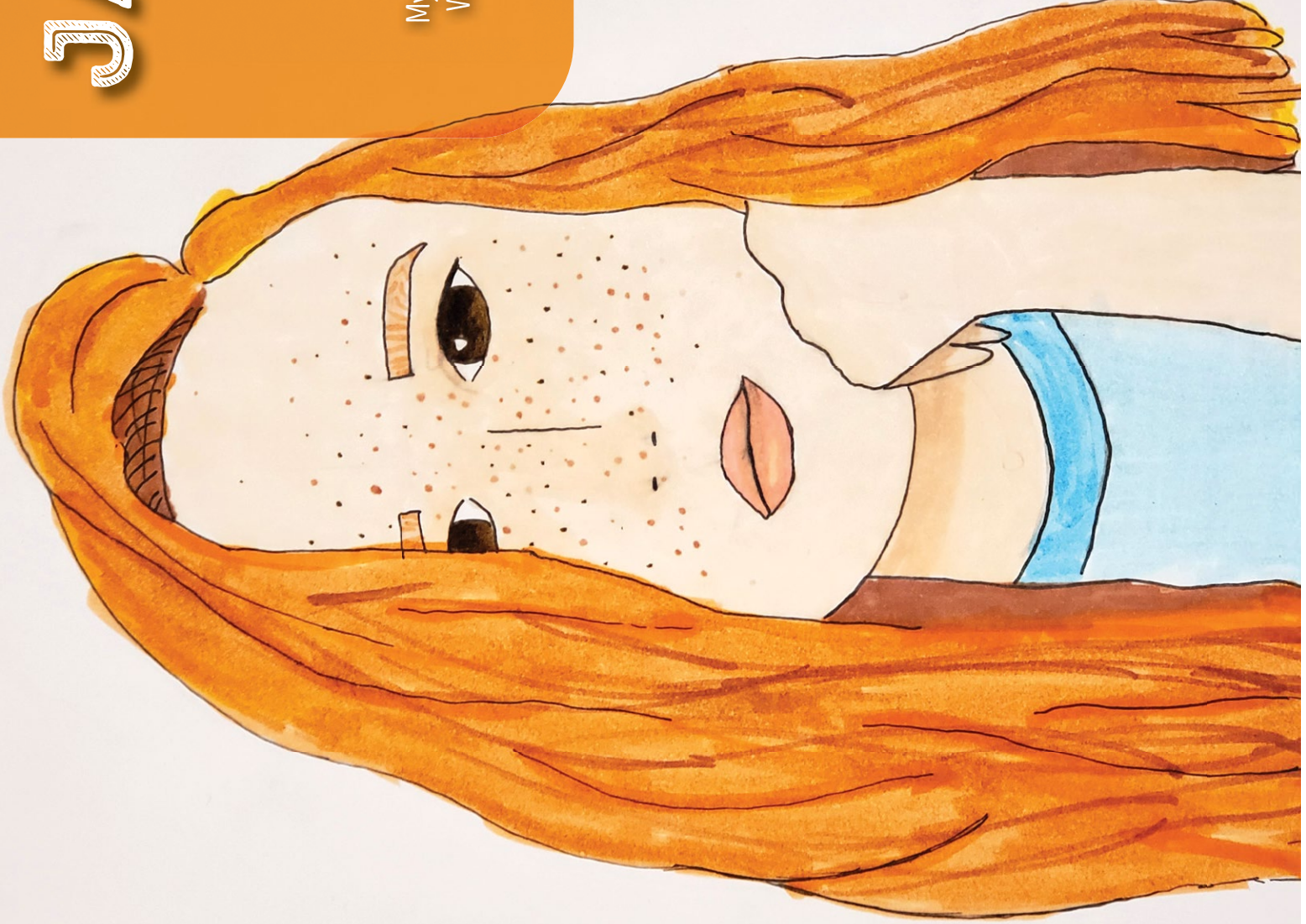


Sunday	Monday	Tuesday	Wednesday	Thursday	Friday	Saturday																																																	
<div> <div>NOVEMBER 2020</div> <table> <tr><td>S</td><td>M</td><td>T</td><td>W</td><td>T</td><td>F</td><td>S</td></tr> <tr><td>1</td><td>2</td><td>3</td><td>4</td><td>5</td><td>6</td><td>7</td></tr> <tr><td>8</td><td>9</td><td>10</td><td>11</td><td>12</td><td>13</td><td>14</td></tr> <tr><td>15</td><td>16</td><td>17</td><td>18</td><td>19</td><td>20</td><td>21</td></tr> <tr><td>22</td><td>23</td><td>24</td><td>25</td><td>26</td><td>27</td><td>28</td></tr> <tr><td>29</td><td>30</td><td></td><td></td><td></td><td></td><td></td></tr> </table> </div>							S	M	T	W	T	F	S	1	2	3	4	5	6	7	8	9	10	11	12	13	14	15	16	17	18	19	20	21	22	23	24	25	26	27	28	29	30												
S	M	T	W	T	F	S																																																	
1	2	3	4	5	6	7																																																	
8	9	10	11	12	13	14																																																	
15	16	17	18	19	20	21																																																	
22	23	24	25	26	27	28																																																	
29	30																																																						
		1	School Improvement	2	No School- Marshall & Skyline	3																																																	
6	7	8	School Improvement	9		10																																																	
13	14	15	School Improvement	16		17																																																	
	Winter Break	Winter Break	Winter Break	Winter Break	Winter Break	18																																																	
20	21	22	23	24	25	26																																																	
27	28	29	30	31	<div>JANUARY 2021</div> <table> <tr><td>S</td><td>M</td><td>T</td><td>W</td><td>T</td><td>F</td><td>S</td></tr> <tr><td></td><td></td><td></td><td></td><td>1</td><td>2</td><td></td></tr> <tr><td>3</td><td>4</td><td>5</td><td>6</td><td>7</td><td>8</td><td>9</td></tr> <tr><td>10</td><td>11</td><td>12</td><td>13</td><td>14</td><td>15</td><td>16</td></tr> <tr><td>17</td><td>18</td><td>19</td><td>20</td><td>21</td><td>22</td><td>23</td></tr> <tr><td>24</td><td>25</td><td>26</td><td>27</td><td>28</td><td>29</td><td>30</td></tr> <tr><td>31</td><td></td><td></td><td></td><td></td><td></td><td></td></tr> </table>		S	M	T	W	T	F	S					1	2		3	4	5	6	7	8	9	10	11	12	13	14	15	16	17	18	19	20	21	22	23	24	25	26	27	28	29	30	31						
S	M	T	W	T	F	S																																																	
				1	2																																																		
3	4	5	6	7	8	9																																																	
10	11	12	13	14	15	16																																																	
17	18	19	20	21	22	23																																																	
24	25	26	27	28	29	30																																																	
31																																																							

JANUARY

JOSTA
PINE RIDGE ELEMENTARY SCHOOL
FIFTH GRADE

My self portrait shows my confidence and pride.
What I learn at my school makes me feel strong
and proud!



FEBRUARY

JAINA
R.E. JEWELL ELEMENTARY SCHOOL
SECOND GRADE

I love science and I love art. At "Jewell School" I learned
about the life cycle of animals and their habitats.
When I make science observations about animals it
helps me with my art too!

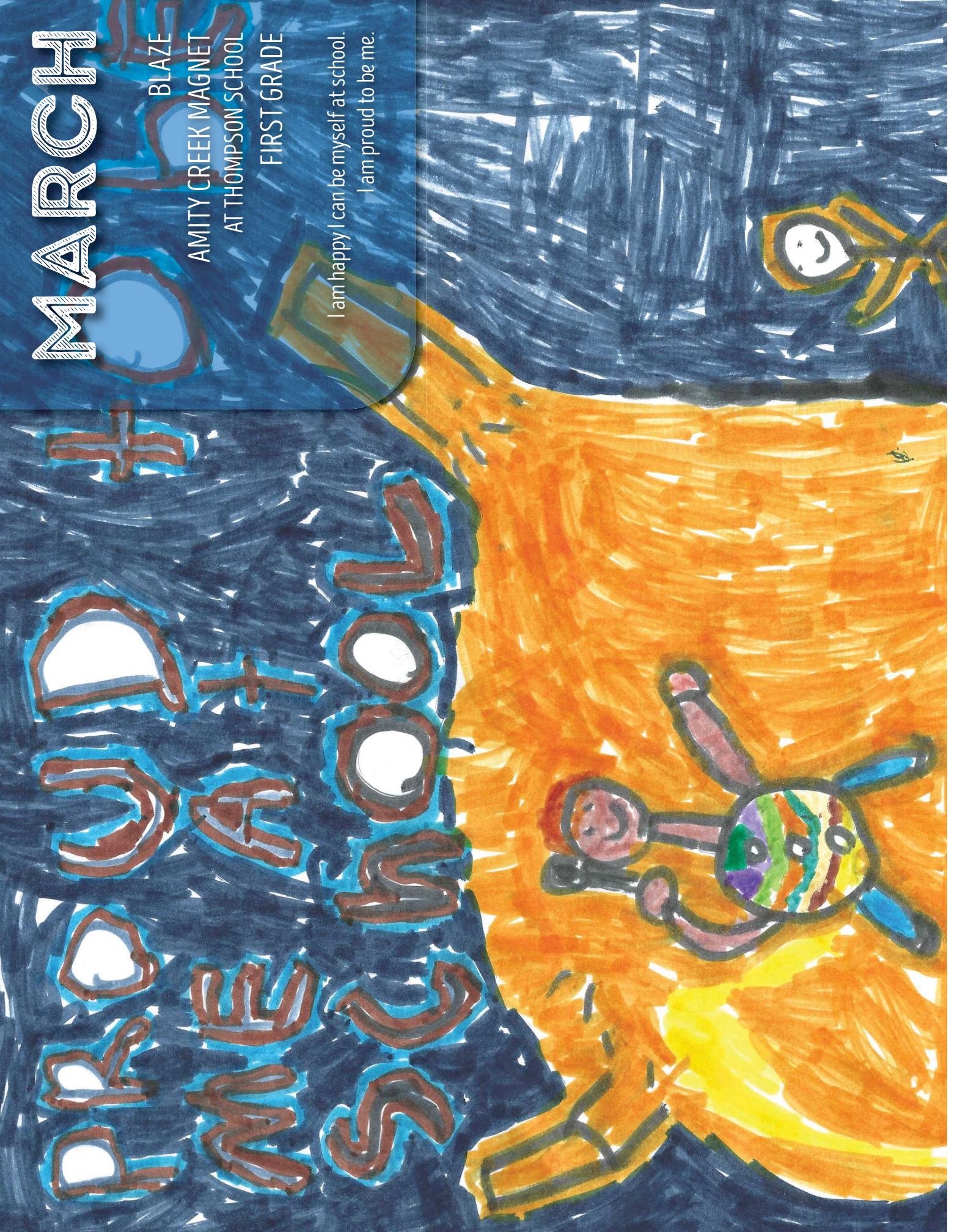


Sunday	Monday	Tuesday	Wednesday	Thursday	Friday	Saturday																																																	
<div> <div>JANUARY 2021</div> <table> <tr><td>S</td><td>M</td><td>T</td><td>W</td><td>T</td><td>F</td><td>S</td></tr> <tr><td></td><td></td><td>1</td><td>2</td><td></td><td></td><td></td></tr> <tr><td>3</td><td>4</td><td>5</td><td>6</td><td>7</td><td>8</td><td>9</td></tr> <tr><td>10</td><td>11</td><td>12</td><td>13</td><td>14</td><td>15</td><td>16</td></tr> <tr><td>17</td><td>18</td><td>19</td><td>20</td><td>21</td><td>22</td><td>23</td></tr> <tr><td>24</td><td>25</td><td>26</td><td>27</td><td>28</td><td>29</td><td>30</td></tr> <tr><td>31</td><td></td><td></td><td></td><td></td><td></td><td></td></tr> </table> </div>							S	M	T	W	T	F	S			1	2				3	4	5	6	7	8	9	10	11	12	13	14	15	16	17	18	19	20	21	22	23	24	25	26	27	28	29	30	31						
S	M	T	W	T	F	S																																																	
		1	2																																																				
3	4	5	6	7	8	9																																																	
10	11	12	13	14	15	16																																																	
17	18	19	20	21	22	23																																																	
24	25	26	27	28	29	30																																																	
31																																																							
	1	2	School Improvement	3	No School- All Elementary, Middle and High School Marshall & Skyline in session	5																																																	
7	8	9	School Improvement	10	11	12																																																	
14	15	16	School Improvement	17	18	19																																																	
			School Improvement	24	25	26																																																	
21	22	23				27																																																	
<div> <div>MARCH 2021</div> <table> <tr><td>S</td><td>M</td><td>T</td><td>W</td><td>T</td><td>F</td><td>S</td></tr> <tr><td></td><td>1</td><td>2</td><td>3</td><td>4</td><td>5</td><td>6</td></tr> <tr><td>7</td><td>8</td><td>9</td><td>10</td><td>11</td><td>12</td><td>13</td></tr> <tr><td>14</td><td>15</td><td>16</td><td>17</td><td>18</td><td>19</td><td>20</td></tr> <tr><td>21</td><td>22</td><td>23</td><td>24</td><td>25</td><td>26</td><td>27</td></tr> <tr><td>28</td><td>29</td><td>30</td><td>31</td><td></td><td></td><td></td></tr> </table> </div>							S	M	T	W	T	F	S		1	2	3	4	5	6	7	8	9	10	11	12	13	14	15	16	17	18	19	20	21	22	23	24	25	26	27	28	29	30	31										
S	M	T	W	T	F	S																																																	
	1	2	3	4	5	6																																																	
7	8	9	10	11	12	13																																																	
14	15	16	17	18	19	20																																																	
21	22	23	24	25	26	27																																																	
28	29	30	31																																																				
28																																																							

MARCH

BLAZE
AMITY CREEK MAGNET
AT THOMPSON SCHOOL
FIRST GRADE

I am happy I can be myself at school.
I am proud to be me.



Sunday	Monday	Tuesday	Wednesday	Thursday	Friday	Saturday																																										
<div> <div>FEBRUARY 2021</div> <table> <tr><td>S</td><td>M</td><td>T</td><td>W</td><td>T</td><td>F</td><td>S</td></tr> <tr><td></td><td>1</td><td>2</td><td>3</td><td>4</td><td>5</td><td>6</td></tr> <tr><td>7</td><td>8</td><td>9</td><td>10</td><td>11</td><td>12</td><td>13</td></tr> <tr><td>14</td><td>15</td><td>16</td><td>17</td><td>18</td><td>19</td><td>20</td></tr> <tr><td>21</td><td>22</td><td>23</td><td>24</td><td>25</td><td>26</td><td>27</td></tr> <tr><td>28</td><td></td><td></td><td></td><td></td><td></td><td></td></tr> </table> </div>							S	M	T	W	T	F	S		1	2	3	4	5	6	7	8	9	10	11	12	13	14	15	16	17	18	19	20	21	22	23	24	25	26	27	28						
S	M	T	W	T	F	S																																										
	1	2	3	4	5	6																																										
7	8	9	10	11	12	13																																										
14	15	16	17	18	19	20																																										
21	22	23	24	25	26	27																																										
28																																																
	1	2	School Improvement	3	4	5																																										
7	8	9	School Improvement	10	11	12																																										
			School Improvement		No School- Marshall & Skyline																																											
14	15	16	17	18	19	20																																										
	Spring Break	Spring Break	Spring Break	Spring Break	Spring Break																																											
21	22	23	24	25	26	27																																										
			School Improvement	<div> <div>APRIL 2021</div> <table> <tr><td>S</td><td>M</td><td>T</td><td>W</td><td>T</td><td>F</td><td>S</td></tr> <tr><td></td><td></td><td></td><td></td><td>1</td><td>2</td><td>3</td></tr> <tr><td>4</td><td>5</td><td>6</td><td>7</td><td>8</td><td>9</td><td>10</td></tr> <tr><td>11</td><td>12</td><td>13</td><td>14</td><td>15</td><td>16</td><td>17</td></tr> <tr><td>18</td><td>19</td><td>20</td><td>21</td><td>22</td><td>23</td><td>24</td></tr> <tr><td>25</td><td>26</td><td>27</td><td>28</td><td>29</td><td>30</td><td></td></tr> </table> </div>			S	M	T	W	T	F	S					1	2	3	4	5	6	7	8	9	10	11	12	13	14	15	16	17	18	19	20	21	22	23	24	25	26	27	28	29	30	
S	M	T	W	T	F	S																																										
				1	2	3																																										
4	5	6	7	8	9	10																																										
11	12	13	14	15	16	17																																										
18	19	20	21	22	23	24																																										
25	26	27	28	29	30																																											
28	29	30	31																																													

APRIL

ABIGAIL
NORTH STAR ELEMENTARY SCHOOL
FIRST GRADE

I am proud of my school because the teachers have super powers that help our brains learn. The super hero in my picture is standing on the North Star which helps to guide our brains.



Sunday	Monday	Tuesday	Wednesday	Thursday	Friday	Saturday																																										
<div> <div>MARCH 2021</div> <table> <tr> <td>S</td><td>M</td><td>T</td><td>W</td><td>T</td><td>F</td><td>S</td></tr> <tr> <td></td><td>1</td><td>2</td><td>3</td><td>4</td><td>5</td><td>6</td></tr> <tr> <td>7</td><td>8</td><td>9</td><td>10</td><td>11</td><td>12</td><td>13</td></tr> <tr> <td>14</td><td>15</td><td>16</td><td>17</td><td>18</td><td>19</td><td>20</td></tr> <tr> <td>21</td><td>22</td><td>23</td><td>24</td><td>25</td><td>26</td><td>27</td></tr> <tr> <td>28</td><td>29</td><td>30</td><td>31</td><td></td><td></td><td></td></tr> </table> </div>							S	M	T	W	T	F	S		1	2	3	4	5	6	7	8	9	10	11	12	13	14	15	16	17	18	19	20	21	22	23	24	25	26	27	28	29	30	31			
S	M	T	W	T	F	S																																										
	1	2	3	4	5	6																																										
7	8	9	10	11	12	13																																										
14	15	16	17	18	19	20																																										
21	22	23	24	25	26	27																																										
28	29	30	31																																													
4	5	6	<div> <div>No School- All Elementary</div> <div>School Improvement</div> </div>	<div> <div>No School- All Elementary and Middle</div> </div>	<div> <div>No School- All Elementary, Middle and High School</div> <div>Marshall & Skyline in session</div> </div>	<div>2</div> <div>3</div>																																										
11	12	13	School Improvement	15	16	17																																										
18	19	20	School Improvement	22	23	24																																										
25	26	27	School Improvement	29	30	<div> <div>MAY 2021</div> <table> <tr> <td>S</td><td>M</td><td>T</td><td>W</td><td>T</td><td>F</td><td>S</td></tr> <tr> <td>2</td><td>3</td><td>4</td><td>5</td><td>6</td><td>7</td><td>1</td></tr> <tr> <td>9</td><td>10</td><td>11</td><td>12</td><td>13</td><td>14</td><td>8</td></tr> <tr> <td>16</td><td>17</td><td>18</td><td>19</td><td>20</td><td>21</td><td>15</td></tr> <tr> <td>23</td><td>24</td><td>25</td><td>26</td><td>27</td><td>28</td><td>22</td></tr> <tr> <td>30</td><td>31</td><td></td><td></td><td></td><td></td><td>29</td></tr> </table> </div>	S	M	T	W	T	F	S	2	3	4	5	6	7	1	9	10	11	12	13	14	8	16	17	18	19	20	21	15	23	24	25	26	27	28	22	30	31					29
S	M	T	W	T	F	S																																										
2	3	4	5	6	7	1																																										
9	10	11	12	13	14	8																																										
16	17	18	19	20	21	15																																										
23	24	25	26	27	28	22																																										
30	31					29																																										

MAY

HARPER

BEND SENIOR HIGH SCHOOL

TWELFTH GRADE

In the Bend-LaPine School District, teachers work with students to give them opportunities to be exposed to new things and develop new interests. It was through this form of student-teacher connection that I discovered my passion for all types of design and helped me start a small graphic design business. I felt encouraged by my mentors to stop dreaming and start doing, hence the saying on this piece. With this enriched education, I feel more prepared to start my college career and life beyond. This is why I'm #BLS Proud.

PLAYING
STARTING
DOING

Sunday	Monday	Tuesday	Wednesday	Thursday	Friday	Saturday
			School Improvement			1
2	3	4	5	6	7	8
9	10	11	12	13	14	15
			School Improvement			
16	17	18	19	20	21	22
			School Improvement			
23	24	25	26	27	28	29

		APRIL 2021							JUNE 2021						
		S	M	T	W	T	F	S	S	M	T	W	T	F	S
						1	2	3				1	2	3	4
		4	5	6	7	8	9	10		6	7	8	9	10	11
		11	12	13	14	15	16	17		13	14	15	16	17	18
		18	19	20	21	22	23	24		20	21	22	23	24	25
		25	26	27	28	29	30			27	28	29	30		26
30	31														
Memorial Day Holiday - No School															

OUR DIFFERENCES Make us STRONGER

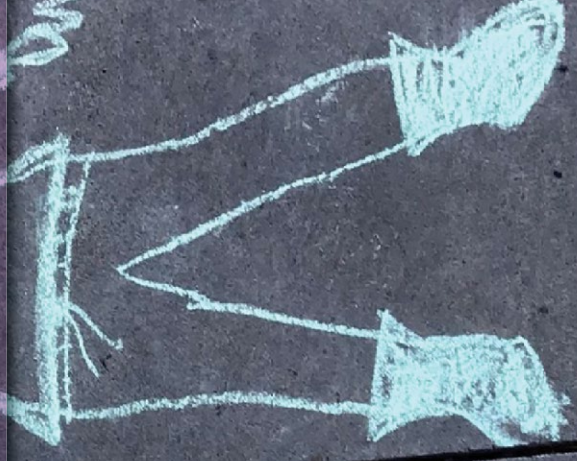
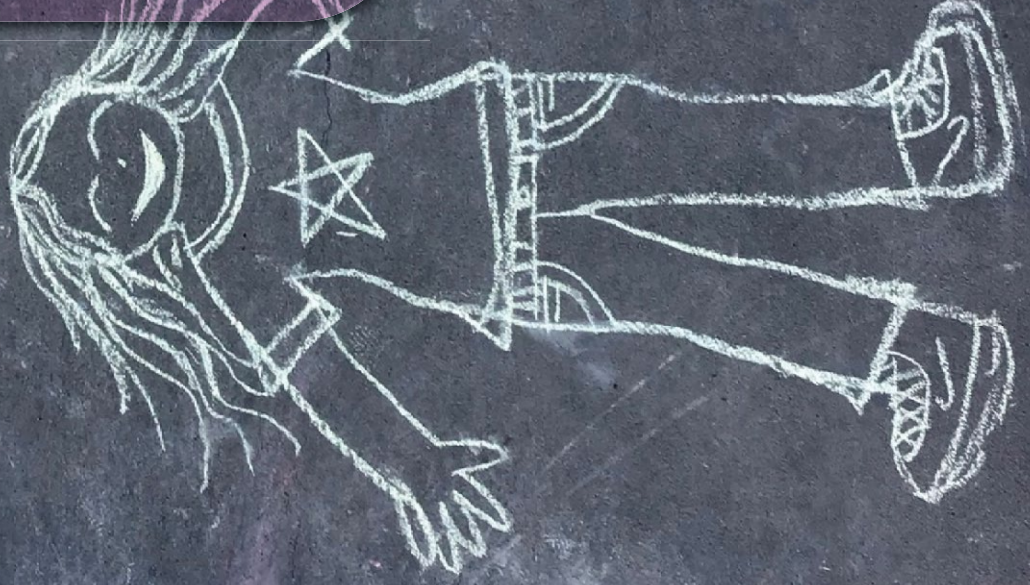
JUNE

AUTUMN

CASCADE MIDDLE SCHOOL

SIXTH GRADE

I am proud to be a part of Bend-La Pine Schools because our unique differences make us stronger together as a community. Just as every person has their differences, so do each of the shapes in my chalk art. As you may notice, each of the different shapes can come together as one and people can too.



JULY

CLARA
SUMMIT HIGH SCHOOL
TENTH GRADE

When a seed is watered and given sunlight, it has the opportunity and environment to grow into a beautiful flower. The same goes for students. When a student is given opportunities and resources, they can find activities they love, meet new people, and grow into a person they can be proud of. Something that I appreciate about my school and district is the vast amount of opportunities given to the students. These opportunities allow kids to find sports and activities that they love and can carry throughout high school and possibly into college. I am proud that my school provides a wide variety of activities to meet the interests of the students that attend the school.



Sunday	Monday	Tuesday	Wednesday	Thursday	Friday	Saturday																																																																																				
<div> <div> <div>JUNE 2021</div> <table> <tr><td>S</td><td>M</td><td>T</td><td>W</td><td>T</td><td>F</td><td>S</td></tr> <tr><td></td><td></td><td>1</td><td>2</td><td>3</td><td>4</td><td>5</td></tr> <tr><td>6</td><td>7</td><td>8</td><td>9</td><td>10</td><td>11</td><td>12</td></tr> <tr><td>13</td><td>14</td><td>15</td><td>16</td><td>17</td><td>18</td><td>19</td></tr> <tr><td>20</td><td>21</td><td>22</td><td>23</td><td>24</td><td>25</td><td>26</td></tr> <tr><td>27</td><td>28</td><td>29</td><td>30</td><td></td><td></td><td></td></tr> </table> </div> <div> <div>AUGUST 2021</div> <table> <tr><td>S</td><td>M</td><td>T</td><td>W</td><td>T</td><td>F</td><td>S</td></tr> <tr><td>1</td><td>2</td><td>3</td><td>4</td><td>5</td><td>6</td><td>7</td></tr> <tr><td>8</td><td>9</td><td>10</td><td>11</td><td>12</td><td>13</td><td>14</td></tr> <tr><td>15</td><td>16</td><td>17</td><td>18</td><td>19</td><td>20</td><td>21</td></tr> <tr><td>22</td><td>23</td><td>24</td><td>25</td><td>26</td><td>27</td><td>28</td></tr> <tr><td>29</td><td>30</td><td>31</td><td></td><td></td><td></td><td></td></tr> </table> </div> </div>							S	M	T	W	T	F	S			1	2	3	4	5	6	7	8	9	10	11	12	13	14	15	16	17	18	19	20	21	22	23	24	25	26	27	28	29	30				S	M	T	W	T	F	S	1	2	3	4	5	6	7	8	9	10	11	12	13	14	15	16	17	18	19	20	21	22	23	24	25	26	27	28	29	30	31				
S	M	T	W	T	F	S																																																																																				
		1	2	3	4	5																																																																																				
6	7	8	9	10	11	12																																																																																				
13	14	15	16	17	18	19																																																																																				
20	21	22	23	24	25	26																																																																																				
27	28	29	30																																																																																							
S	M	T	W	T	F	S																																																																																				
1	2	3	4	5	6	7																																																																																				
8	9	10	11	12	13	14																																																																																				
15	16	17	18	19	20	21																																																																																				
22	23	24	25	26	27	28																																																																																				
29	30	31																																																																																								
Independence Day Holiday																																																																																										
4	5	6	7	8	9	10																																																																																				
11	12	13	14	15	16	17																																																																																				
18	19	20	21	22	23	24																																																																																				
25	26	27	28	29	30	31																																																																																				

AUGUST

AVERY
LA PINE HIGH SCHOOL
ELEVENTH GRADE

I am proud to be a part of La Pine High School
because of my connections I have made
through LPHS athletics.



Sunday	Monday	Tuesday	Wednesday	Thursday	Friday	Saturday
1	2	3	4	5	6	7
8	9	10	11	12	13	14
15	16	17	18	19	20	21
22	23	24	25	26	27	28

JULY 2021							SEPTEMBER 2021						
S	M	T	W	T	F	S	S	M	T	W	T	F	S
4	5	6	7	8	9	10							
11	12	13	14	15	16	17							
18	19	20	21	22	23	24							
25	26	27	28	29	30	31							

Rights and Responsibilities Handbook

Introduction

The Board of Directors has adopted Administrative Policies and Regulations to ensure the fair treatment of students, families and the general public, and the orderly operation of schools. The superintendent is responsible for implementing these policies and regulations, which can be found on our website, www.bend.k12.or.us. This section summarizes the rights and responsibilities of students, parents/guardians and staff at Bend-La Pine Schools as reflected in the policies and regulations.

Individual schools within the district have authority to adopt school rules to assist them in implementing Administrative Policies and Regulations. Students and their families are encouraged to become familiar with their home school's rules. Please contact your school for more information.

STUDENT RESPONSIBILITIES

- Attend school regularly and punctually.
- Provide excuses for absences in writing from a parent or guardian. Absences are excused for illness, emergencies beyond student control and for other reasons where satisfactory arrangements are made in advance by a parent or guardian. All other absences are unexcused.
- Be self-controlled, reasonably quiet and non-disruptive on school campus, at school sponsored activities and on school vehicles.
- Be clean and dress in compliance with school rules of sanitation and safety and in a fashion that will not disrupt classroom procedures.
- Be reasonable, respectful, self-controlled and considerate in your relationships with other students.
- Maintain relationships with teachers and all other school personnel that are mutually respectful. Comply with directions promptly and courteously.
- Use language and gestures that are respectful and free of profanity or obscenities.
- Respect private, public and school property.
- Do not possess or use tobacco in any form; its use by

students on school property or while attending school-sponsored activities is illegal in the state of Oregon.

- Do not use, possess, share and/or sell, or be under the influence of alcohol, narcotics, or other dangerous drugs while under school jurisdiction on Bend-La Pine Schools' property, or at any school-sponsored activity. Those in violation are subject to immediate discipline, including suspension and possibly expulsion.

PARENT RESPONSIBILITIES

- Send your child to school as required by Oregon law.
- Make certain your child's attendance at school is regular and punctual and that all absences are properly excused.
- Ensure that your child is clean, dressed in compliance with school rules and in a fashion that will not disrupt classroom procedures and the educational process.
- Be sure your child is in good health.
- Guide your children from the earliest years to develop socially acceptable standards of behavior, to exercise self-control, and to be accountable for their actions.
- Teach your child, by word and example, respect for the law, for the authority of the school and for the rights and property of others.
- Know and understand the rules that your child is expected to observe at school. Be aware of the consequences for violations of these rules and accept responsibility for your child's actions.
- Be familiar with the Student Code of Conduct and any information provided by your child's school.
- Instill in your child a desire to learn. Encourage respect for honest work and an interest in exploring broader fields of knowledge.
- Become acquainted with your child's school, its staff, curriculum and activities. Attend conferences and school functions.
- Communicate your concerns to school officials, starting at your child's school. starting at your child's school.



Aven. Three Rivers School, Third Grade

Student Rights

Respecting Student Rights and Requiring Students to Respect the Rights of Others

AGE OF MAJORITY

Every student 18 years of age or older is considered an adult and shall have the same rights and responsibilities as an adult. Adult students, like all other students, shall comply with Administrative Policies and Regulations and established rules, pursue a prescribed course of study, and respect the authority of teachers and the administration.

When a student turns 18, or if the student is emancipated, all Administrative Policies and Regulations that refer to parents/guardians will be interpreted to refer to the student. Please see JFD-AR: Students of Legal Age for more information.

DRESS AND GROOMING

The Board of Directors believe that appropriate dress and grooming contribute to a productive learning environment. The Board expects students to give proper attention to personal cleanliness and to wear clothes that are suitable for the school activities in which they participate. Students have the right to make individual choices from a wide range of clothing and grooming styles, but they must not present a health or safety hazard or a distraction that would interfere with the educational process.

The grooming standards for Bend-La Pine Schools' students pertain to health and safety concerns but grant, when possible, a reasonable expression of individual taste, including appreciation of current fashion or style trends tempered with restrictions on extremes that are dangerous or disruptive to the educational process.

Check with your neighborhood school for dress code expectations. Please see JFCA-AP and JFCA-AR: Student Code of Dress for more information.

ELECTRONIC DEVICES

Student possession and/or use of electronic devices such as cell phones, personal digital assistants, and electronic media devices cannot interrupt or interfere with the education process. Please see JFCB-AR: Personal Communication Devices for more information.

FREEDOM OF EXPRESSION ON SCHOOL PREMISES

Freedom of expression is a constitutional right. It is guaranteed at school but may not interfere with other basic rights of individual students, including the right to pursue their education without the disruption of others. The opportunity for students to exercise freedom of expression within the law is an important element in the learning process.

Students may not distribute or display materials that are libelous, obscene, dangerous, disruptive, or that violate the law or regulations.

Students shall not distribute or display material of a commercial nature. Administrative approval is required for the distribution of materials on school premises.

This policy shall be applied in a non-discriminatory manner, allowing the dissemination of diverse viewpoints on political and social issues. The policy shall also be applied in a manner that encourages respect for individuals without regard to race, color, religion, sex, sexual orientation, national origin, marital status, age or disability. Peaceful demonstrations or protests are permissible when they do not interfere with the school program or the rights of others. Students who engage in disruptive demonstrations will be instructed by school administration to desist and disperse immediately. Failure to comply with such orders may result in discipline, including suspension and expulsion.

NEIGHBORHOOD RIGHTS

Community residents have a right to privacy and freedom from abusive behavior. Students must not loiter, litter, trespass or create nuisance conditions for residents of the community.

OFF CAMPUS SOLICITATION OF FUNDS

Students are not authorized to conduct door-to-door promotion or solicitation for a school or a school group without being accompanied by a parent or legal guardian. Please see IGDF-AR: Student Fund-Raising Activities for more information.

PHYSICAL RESTRAINT

The use of physical restraint and/or seclusion is only permitted when a student's behavior poses a reasonable threat of imminent, serious bodily injury to themselves or others and less restrictive interventions would not be effective. Physical restraint or seclusion may not be used for discipline, punishment or for the convenience of district staff.

Except in the case of an emergency, only staff current in the required training in accordance with the district-designated physical restraint and seclusion training program may use physical restraint or seclusion with a student. In an emergency, other personnel may use physical restraint and/or seclusion when such trained personnel are not immediately available due to the unforeseeable nature of the emergency and there is continuous monitoring.

For further information, please refer to Bend-La Pine Schools' JGAB-AP and JGAB-AR: Use of Restraint and Seclusion.

STUDENT SEARCHES, SEIZURE AND QUESTIONING

Bend-La Pine Schools seeks to ensure a learning environment which protects the health and safety of students and staff. To assist in attaining these goals, Bend-La Pine Schools officials may search a student's person and property, including property assigned by the district for the student's use. District officials may seize an item which is evidence of a violation of law, Bend-La Pine Schools policies or rules, or which the possession or use of is prohibited by law, policies or rules.

A search may be conducted when there is reasonable suspicion to believe that evidence of a prohibited item is present in a particular place and/or a particular student has possession of a prohibited item at school. Bend-La Pine Schools officials may seize prohibited items and evidence.

A search of district property assigned to students, including but not limited to lockers or desks may occur from time to time if Bend-La Pine Schools officials have reason to believe that the property contains items which may be hazardous to the safety or health of students or contains items which may belong to someone else.

Bend-La Pine Schools may monitor district issued electronic devices, including iPads. Bend-La Pine Schools does not assure the privacy of electronic communications or practices if district equipment or network services are employed.

Students' vehicles may be parked on district property on the condition that students and their parent/guardian allow the vehicle and its contents, upon reasonable suspicion, to be searched.

School officials are not authorized to conduct strip searches. The use of dogs trained to search for drugs may be utilized for generalized, exploratory searches on an unannounced basis. Law enforcement or representatives from the Department of Human Services may interview students at the school site. Please see JFC-AR: Student Searches and Questioning for more information.

STUDENT ORGANIZATIONS

Organized student groups are an integral part of the school system and make important contributions to the life of the school and the student. School regulations require all organizations that carry out activities within the school to obtain approval of the principal or principal's designee. Please see IGDA-AR: Student Organization for more information.

SURVEYS

Federal law affords parents/guardians certain rights regarding our conducting surveys, collection and use of information for marketing purposes and certain physical exams. Parents/guardians may opt their student out of participation in any protected information survey. Parents/guardians also have the right to review, upon request, any instructional materials used in connection with any protected information survey or as part of the educational curriculum. Bend-La Pine Schools has developed and adopted KAB-AP and KAB-AR: Parental Rights (Survey of Students), consistent with federal law, regarding these rights. It is available on the district's website, www.bend.k12.or.us. The Oregon Healthy Teens Survey is administered to select students in the spring.

ACCIDENT INSURANCE

It is important to know that Bend-La Pine Schools does not carry accident insurance for students. This means that you, as parent or guardian, are responsible for any medical bills if your child is hurt during school activities. Bend-La Pine Schools does provide access to insurance plans offered through Myers-Stevens & Toohey and Company, Inc. to help pay for those bills. Information on this coverage is provided to all parents/guardians at the beginning of the school year, or can be picked up at your child's school at any time during the year.

Attendance and Absences

COMPULSORY SCHOOL ATTENDANCE AND ABSENCES

Oregon Law requires school-age children, age 6 or older, to be enrolled in public school and attend on a regular basis. An exemption from compulsory attendance may be granted to the parent or guardian of a child 16 or 17 years of age if the child is employed full-time, employed part-time and enrolled in school part-time, or enrolled in a community college or other state-registered alternative education program. This exemption must be approved by the school principal and the superintendent and will be renewed for a limited time only. The exemption must be renewed on a semiannual basis. See OAR 581-021-0076. The district has established specific attendance, truancy and tardy policies for students. Children are also exempt from public school enrollment and attendance if they are enrolled in a private school or if they are registered for home instruction through the High Desert Education Service District.

Please note the following information regarding absences:

- Notification from a parent or guardian is required for re-entry to class after any absence.
- Requests to leave school for any reason must be approved by a parent or guardian.
- Parents and guardians are urged to make doctor or dental appointments after school hours to minimize the loss of school time.

When a student is ill, the student should be kept at home. However, every effort should be made to avoid keeping a student out of school for reasons other than illness. School staff is responsible for maintaining attendance records and reporting absences to parents/guardians by a notation on the report card, a telephone call or a letter when a problem is evident. Please see JEA-AP: Student Attendance and JEA-AR: Compulsory Attendance for more information.

Electronic Resources

Bend-La Pine Schools believes that electronic communication is a tool for lifelong learning and that by providing these services we will promote educational and organizational excellence.

At Bend-La Pine Schools we strive to help all understand what it means to be a good digital citizen and to model these behaviors. This includes encouraging students and staff to practice proper and ethical use of electronic resources and to use technology responsibly. All students and staff must be knowledgeable regarding procedures, ethics and security involved in the use of electronic communication.

District procedures are in place to protect students, to improve the user experience, to develop processes for the reporting of abuses and to prevent their recurrence.

The inappropriate use or abuse of electronic information resources can be a violation of Bend-La Pine Schools policies, local, state, and federal laws; and can result in the loss of privileges and/or prosecution.

Guidelines and policies regarding the use of electronic information resources are available at our website www.bend.k12.or.us.

School Violations

Violation of school rules and regulations, based on severity and frequency, may result in reprimand and warning, detention, removal of privileges, suspension, or expulsion. In matters other than minor and routine instances, parents/guardians will be involved and informed. In all cases of suspension or expulsion, due process procedures will be no less than those required by Bend-La Pine Schools policies and laws. In addition to rules and regulations of Bend-La Pine Schools detailed in this publication, students are expected to obey the laws of the State of Oregon and of the United States. On school property, and at school-sponsored activities, violations of public laws will result in disciplinary action taken by school authorities regardless of whether or not law enforcement is involved.

The following conduct will constitute grounds for disciplinary action. This list is not intended to contain all conduct that may be grounds for disciplinary action.

Please see JG-AP: Student Conduct and Discipline, AC-AP: Non-Discrimination, and the policies and procedures listed below for more information.

- Arson
- Copyright Violations, Plagiarism or Cheating
- Cyberbullying
- Disruptive or Unsafe Behavior
- Forgery
- Gang Activity of Conduct (JFCE-AR)
- Harassment, Intimidation, Bullying
- Hazing
- Malicious Mischief (ECAB-AR)
- Menacing
- Physical Violence or Threats of Physical Violence (JFCM-AP)
- Profane Language and/or Indecent Gestures (JG-AP)
- Regulated Campus Violations
- Sexual Harassment
- Theft (ECAB-AR)
- Trespassing
- Unlawful Interference with School Authorities (JG-AP and JHFC-AR)
- Vandalism (ECAB-AR)

DRUGS AND ALCOHOL

It is unlawful for a student to possess, purchase, use, distribute or be under the influence of an illegal substance, or an imitation illegal substance; or to possess, purchase, use, distribute or be under the influence of a restricted or controlled substance for which the student does not have a prescription. It is also unlawful for a student to distribute his/her own prescription drug to others. Everyday items to alter mood or state of mind are prohibited. Contact your school office for information about required student medical forms pertaining to distribution of prescription drugs to students.

TOBACCO, INHALANTS & AEROSOLS

The possession, use or distribution of tobacco or its imitation in any form by students violates Oregon Law and Bend-La Pine Schools policy. Tobacco products, including e-cigarettes, will not be allowed on school property, in district vehicles or at school events or activities. Please see JFCG-AP: Tobacco Free Environment for more information.

WEAPONS

Students are prohibited from bringing or possessing weapons of any kind on school property, including replicas of weapons. Students bringing or possessing weapons on school property are subject to discipline, including expulsion. In accordance with Oregon law, Bend-La Pine Schools has a zero-tolerance policy for students bringing to or possessing firearms on school property, property under the jurisdiction of Bend-La Pine Schools, or to any activity under the jurisdiction of Bend-La Pine Schools. Any student violating this policy shall be subject to mandatory expulsion for one year. Please see JFCJ-AP: Weapons in Schools for more information. Families are encouraged to practice safe storage of weapons at home and in vehicles to reduce access to minors.

Disciplinary Procedures

School discipline is intended to ensure a positive learning environment for all students. Disciplinary consequences are designed to be progressive and appropriate for the situation. For a comprehensive description of Bend-La Pine Schools' disciplinary procedures, please see JG-AP: Student Conduct and Discipline.

EXPULSION

Expulsion denies a student the right to attend school and all school activities. A student may be expelled only when the student's conduct poses a threat to the health or safety of students or school employees, when other strategies to change student conduct have been ineffective, or when expulsion is required by law. In making a decision whether to place a student on expulsion, the principal or designee must consider the age of the student and the past pattern of behavior by the student. Expulsion for one year is mandatory when a student brings or possesses a firearm on school property. Please refer to JG-AP: Student Conduct and Discipline for information on expulsion procedures.

SUSPENSION

Suspension temporarily removes a student's privilege to attend school and all school activities. Suspensions are made by the principal, or designee with the approval of the principal, and do not exceed 10 school days. Under special circumstances, a suspension may be continued until specific pending action occurs, such as a court hearing, a medical, psychiatric or Safe Schools assessment, or a review by a probation officer. Please refer to JG-AP: Student Conduct and Discipline for information on suspension procedures.

SCHOOL PROBATION

School probation may include detention and/or punishment deemed suitable by the school official. School probation may remove from the student the privilege of attending or participating in co-curricular activities and athletic events and non-curricular programs of the school. School probation may be applied for as long as one calendar year. Please refer to JG-AP: Student Conduct and Discipline for information on school probation procedures.

HARASSMENT AND DISCRIMINATION POLICY, COMPLAINTS AND INVESTIGATION

It is the intent of the district to maintain a learning environment that is free from unlawful harassment and discrimination. Each student and Bend-La Pine Schools' employee has the right to work in an atmosphere that promotes equal opportunities and is free from all forms of discrimination and conduct that can be considered harassing, coercive or disruptive.

It is a violation of district policy for any employee, student or other person in the school environment to harass or discriminate against a student or employee, through conduct or communication, while on any school or district premises, or at any school-sponsored activity regardless of location. This includes, but is not limited to, buildings, facilities, grounds, school buses and parking areas.

Students who believe they have been or are being harassed or discriminated against should report the situation to any of the following persons immediately:

- Teacher or guidance counselor
- Principal or assistant principal of the school
- Superintendent, superintendent's staff or designee

All reports of harassment or discrimination shall be promptly investigated. Bend-La Pine Schools students and employees who report harassment or discrimination shall not be subjected to any form of retaliation for making a report. To the maximum extent possible, all reports and investigations shall be conducted confidentially to protect the privacy of all involved.

For more information, please see the following Administrative Policies and Administrative Regulations:

- AC-AP: Non-Discrimination
- AC-AR: Discrimination Complaint / Grievance Procedure
- IGBA-AP: Students with Disabilities
- IGBA-AR: Students with Disabilities
- JB-AP: Equal Educational Opportunity
- KL-AR: Public Complaints
- KL-AP: Public Complaints
- GBMA-AP: Whistleblower

Positive School Climate ::

SAFE, HEALTHY LEARNING ENVIRONMENTS

Safe schools are fundamental to students' school successes and achievements. Providing a safe and orderly school environment is an ever-present priority of Bend-La Pine Schools. Here, school safety is addressed through a comprehensive approach that focuses on planning, prevention, intervention and response. Systems and programs are in place that create caring school communities where students and staff feel safe and supported. Bend-La Pine Schools is committed to ensuring psychologically safe, healthy learning environments. To learn more about our planning, prevention, intervention and response to crisis situations, visit our Emergency Preparedness webpage at www.bend.k12.or.us

SAFE SCHOOLS ALLIANCE PARTNERSHIPS

Key to the process of building and maintaining safe schools is the development of active partnerships among schools, parents and communities. Bend-La Pine Schools is a founding partner of the Safe Schools Alliance (established in 1998). The goal of the alliance is to provide safe and secure school environments through community and interagency partnerships among students, parents, education, mental health, community justice and law enforcement. This network of regional school districts and partner agencies meets monthly to share information, discuss items of common interest and concern, advise member agencies on the adoption of policy and explore curriculum and programs that increase positive school climates for our more than 18,500 students and the region's more than 30,000 students.

SAFETY RESOURCES FOR PARENTS

Our partners share valuable resources with our community, from FBI tips for safe internet surfing to locations from law enforcement offering free gun locks and safe weapons storage information to maps with safe biking and walking routes to school. To learn more visit the Safety Resources webpage at www.bend.k12.or.us

TIP AND TALK LINES FOR STUDENTS

Bend-La Pine Schools makes the First Step app, an app to connect students to tip lines and mental and physical health resources, available on the iPads assigned to all students in grades 6-12.

Inside First Step, students will find resources like, "3 Ways to Help a Friend," "Getting Through Today," contacts for free counseling and two featured resources: SafeOregon Tip Line and YouthLine.

- SafeOregon — students can report anything from vandalism to theft to cyberbullying via text or phone, email, or online, through the app.
- YouthLine — a free and confidential teen-to-teen help line.

Learn more about First Step at our Student Mental Health page at www.bend.k12.or.us

Transporting Students to and from School ::::::::::::::

BUSING

Bend-La Pine Schools operates transportation services for elementary students who live more than one mile from their schools and for secondary students who live more than 1.5 miles from their schools, as required by state law.

Students with special needs may qualify for transportation if they cannot access school without it. Special transportation requirements must be included in the child's Individualized Education Plan (IEP).

Only children eligible for transportation services will be transported. Parents/guardians may not ride buses with their students. Children who are not in school are not allowed to ride the bus. It is Bend-La Pine Schools' goal to provide safe and economical student transportation.

There are responsibilities and rules for each member involved in the transportation system: staff, students and parents. We ask parents/guardians to become familiar with the rules and procedures and discuss them with their child.

ROUTE INFORMATION

Bus route information is available at each school, the transportation offices in Bend and La Pine, and on our website, www.bend.k12.or.us. Bus routes and stop times may be adjusted at any time. If your child fails to return home at the expected time, contact the school first. Please keep in mind there may be many reasons for a bus to be late on its route. A bus could be late if there is a substitute driver, if there are mechanical problems, traffic issues, inclement weather, or poor road conditions.

THE DRIVER

To become an Oregon school bus driver, a person must meet very specific requirements established by federal and state law. Drivers for Bend-La Pine Schools are expected to manage student behaviors while operating the bus in a safe manner. Each driver has received several types of training. In addition to behind-the-wheel training, the drivers are required to attend ongoing instruction in first aid procedures and student behavior management.

USE OF CHARTER BUSES

Bend-La Pine Schools may utilize charter bus services as needed for student transportation. All charter services are provided by student activity bus certified providers, as authorized by the Oregon Department of Education.

STOPPING FOR SCHOOL BUSES

School buses must follow all the traffic regulations that apply to individual motorists. Oregon school buses are equipped with flashing amber and flashing red lights near the top of the bus on the front and at the rear of the bus. The flashing amber lights are turned on to warn traffic that the bus is about to stop to load or unload children. When the red lights begin to flash, drivers traveling in either direction on any road, street, or highway must

stop before reaching the bus and remain stopped until the flashing red lights are turned off. The school bus law applies if you are on any undivided highway with two, three, or four lanes of traffic.

VIDEO CAMERAS

Video cameras are used on Bend-La Pine Schools' transportation vehicles. They may be used to monitor student behavior on Bend-La Pine Schools' vehicles transporting students to and from school and extracurricular activities. Students in violation of district conduct rules shall be subject to disciplinary action in accordance with established Administrative Policies and Regulations, and Oregon law governing student conduct and discipline. Any illegal acts videotaped on Bend-La Pine Schools' vehicles will be turned over to the appropriate personnel and/or law enforcement authorities.

STUDENTS AND PARENTS

Bend-La Pine Schools has established a code of conduct and disciplinary procedures to ensure that students comply with safety rules while using the transportation system. The code of conduct includes a list of rules adopted by the Oregon State Department of Education, as well as a list of additional rules adopted by the district. Students and their parents/guardians should familiarize themselves with the code of conduct and procedures, which can be found in EEACC-AP and EEACC-AR: Student Conduct on School Buses.

The following items are not allowed on the bus: animals, glass containers, aerosol cans, skateboards (unless secured in a backpack), fishing poles, snowboards, hockey or lacrosse sticks, weapons or look-alike weapons, golf clubs, helium balloons, skis, shovels or laser pens.

Roller blades and shoes with wheels must be transported in a duffel bag or backpack. Craft projects must be in a bag or box. Any item used in an unsafe manner may be confiscated and the student must bring a parent to the transportation department office to retrieve it.

STUDENT RIDERSHIP TECHNOLOGY

Bend-La Pine Schools offers My Bus Stop App. Parents, guardians and students can know where their school bus is and what time it will show up at their home stop, all from a smartphone, mobile device or computer.

Bend-La Pine Schools My Bus Stop graphically displays the location of the school bus on a map, as well as the estimated time of arrival (ETA) to a student's bus stop. The bus location is automatically updated and the ETA is recalculated to accommodate any delays due to traffic while in route.

Families are also able to opt into a system that will allow them to be alerted when their child enters and exits the school bus with the new Radio Frequency Identification Device cards.

Learn more about these tools on our My Bus Stop page on the Bend-La Pine Schools' website, www.bend.k12.or.us

Student Records :::::.

Student records will be maintained by Bend-La Pine Schools for the benefit of the student. They will be used to promote the instruction, career development, guidance and educational progress of the student.

In compliance with federal and state regulations, the following is a notice to parents/guardians and eligible students (who are 18 years of age or older) of their rights regarding student records

PARENT-STUDENT RIGHTS REGARDING RECORDS

Notification of Rights under FERPA for Elementary and Secondary Schools

The Family Educational Rights and Privacy Act (FERPA) affords parents and students who are 18 years of age or older ("eligible students") certain rights with respect to the student's education records.

These rights are as follows:

1. The right to inspect and review the student's education records within 45 days after the day the school receives a request for access.

Parents/guardians or eligible students should submit to the school principal (or appropriate school official) a written request that identifies the records they wish to inspect. The school official will make arrangements for access and notify the parent/guardian or eligible student of the time and place where the records may be inspected.

2. The right to request the amendment of the student's education records that the parent/guardian or eligible student believes are inaccurate, misleading, or otherwise in violation of the student's privacy rights under FERPA.

Parents/guardians or eligible students who wish to ask the school to amend a record should write the school principal (or appropriate school official), clearly identify the part of the record they want changed, and specify why it should be changed. If the school decides not to amend the record as requested by the parent/guardian or eligible student, the school will notify the parent/guardian or eligible student of the decision and of their right to a hearing regarding the request for amendment. Additional information regarding the hearing procedures will be provided to the parent/guardian or eligible student when notified of the right to a hearing.

3. The right to provide written consent before the school discloses personally identifiable information (PII) from the student's education records, except to the extent that FERPA authorizes disclosure without consent.

One exception, which permits disclosure without consent, is disclosure to school officials with legitimate educational interests. A school official is a person employed by the school as an administrator, supervisor, instructor, or support staff member (including health or medical staff and law enforcement unit personnel) or a person serving on the school board. A school official also may include a volunteer or contractor outside of the school who performs an institutional service or function for which the school would otherwise use its own employees and who is under the direct control of the school with respect to the use and maintenance of PII from education records, such as an attorney, auditor, medical consultant, or therapist; a parent/guardian or student volunteering to serve on an official committee, such as a disciplinary or grievance committee; or a parent, student, or other volunteer assisting another school official in

performing his or her tasks. A school official may include vendors who provide video or other technology applications and tools, including those used in connection with remote learning. A school official has a legitimate educational interest if the official needs to review an education record in order to fulfill his or her professional responsibility.

4. The right to file a complaint with the U.S. Department of Education concerning alleged failures by the school to comply with the requirements of FERPA. The name and address of the Office that administers FERPA are:

*Student Privacy Policy Office, U.S. Department of Education
400 Maryland Avenue, SW, Washington, DC 20202*

See the list below of the disclosures that elementary and secondary schools may make without consent.

FERPA permits the disclosure of PII from students' education records, without consent of the parent/guardian or eligible student, if the disclosure meets certain conditions found in §99.31 of the FERPA regulations. Except for disclosures to school officials, disclosures related to some judicial orders or lawfully issued subpoenas, disclosures of directory information, and disclosures to the parent/guardian or eligible student, §99.32 of the FERPA regulations requires the school to record the disclosure. Parents/guardians and eligible students have a right to inspect and review the record of disclosures. A school may disclose PII from the education records of a student without obtaining prior written consent of the parents/guardians or the eligible student as follows:

To other school officials, including teachers, within the educational agency or institution whom the school has determined to have legitimate educational interests. This includes contractors, consultants, volunteers, or other parties to whom the school has outsourced institutional services or functions, provided that the conditions listed in §99.31(a)(1)(i)(B) (1) - (a)(1)(i)(B)(2) are met. (§99.31(a)(1))

- To officials of another school, school system, or institution of postsecondary education where the student seeks or intends to enroll, or where the student is already enrolled if the disclosure is for purposes related to the student's enrollment or transfer, subject to the requirements of §99.34. (§99.31(a)(2))
- To authorized representatives of the U. S. Comptroller General, the U. S. Attorney General, the U.S. Secretary of Education, or state and local educational authorities, such as the state educational agency in the parent/guardian or eligible student's state (SEA). Disclosures under this provision may be made, subject to the requirements of §99.35, in connection with an audit or evaluation of federal- or state-supported education programs, or for the enforcement of or compliance with federal legal requirements that relate to those programs. These entities may make further disclosures of PII to outside entities that are designated by them as their authorized representatives to conduct any audit, evaluation, or enforcement or compliance activity on their behalf. (§§99.31(a)(3) and 99.35)
- In connection with financial aid for which the student has applied or which the student has received, if the information is necessary to determine eligibility for the aid, determine the amount of the aid, determine the conditions of the aid, or enforce the terms and conditions of the aid. (§99.31(a)(4))
- To state and local officials or authorities to whom information is specifically allowed to be reported or disclosed by a state statute that concerns the juvenile justice system and the system's ability to effectively serve, prior to adjudication, the student whose records were released, subject to §99.38. (§99.31(a)(5))
- To organizations conducting studies for, or on behalf of, the school, in order to: (a) develop, validate, or administer predictive tests; (b) administer student aid programs; or (c) improve instruction. (§99.31(a)(6))

- To accrediting organizations to carry out their accrediting functions. (§99.31(a)(7))
- To parents/guardians of an eligible student if the student is a dependent for IRS tax purposes. (§99.31(a)(8))
- To comply with a judicial order or lawfully issued subpoena. (§99.31(a)(9))
- To appropriate officials in connection with a health or safety emergency, subject to §99.36. (§99.31(a)(10))
- Information the school has designated as "directory information" under §99.37. (§99.31(a)(11))

STUDENT EDUCATIONAL RECORDS

Student progress records include a transcript of grades, courses taken, records of attendance, tests relating specifically to achievement or the measurement of aptitude and health records.

The permanent record is that part of the progress record, which contains the name of the student, birth date, names of parents or guardians, date of entry into school, previous schools attended, the date and reason for leaving school and such additional information as prescribed.

Student progress records shall be available to the administrative and teaching staff, designated clerical staff and parents or legal guardians.

Upon request of parents, legal guardians or eligible students, records are available to other agencies having a demonstrated interest in the student.

DIRECTORY INFORMATION

According to federal law, "Directory Information" may include the student's name, address, telephone number, photograph, date and place of birth, student identification number, major field of study, participation in officially recognized activities and sports, weight and height of members of athletic teams, dates of attendance, degrees and awards received and the most recent previous school attended by the student. The school may release student directory information. Parents/guardians who do not want their student's directory information released must contact the school office with their written request before September 15 of each school year. See JOA-AP: Directory Information for more information.

DISCLOSURE OF INFORMATION TO MILITARY RECRUITERS AND COLLEGES

In accordance with the Elementary and Secondary Education Act of 1965 (ESEA), and with the Bend-La Pine Schools' desire to promote higher education, upon written request the district will release students' names, telephone numbers and addresses to recruiters for the United States military and to colleges and other post-secondary educational institutions.

Parents/guardians who do not want information released on their students must contact the school office with their written request before September 15 of each school year. As used in this section, "school officials" means licensed staff members, school counselors, school and Bend-La Pine Schools administrators, or other licensed or non-licensed staff, and may include contractors, consultants, volunteers, or other parties with whom Bend-La Pine Schools has outsourced institutional services or functions, provided that the outside party performs services or functions for which the District would otherwise use employees, and is under the direct control of Bend-La Pine Schools with respect to the use and maintenance of the information disclosed.

As used in this section, "legitimate educational interest" means an interest of a school official that arises from a need to fulfill his or her professional responsibility to Bend-La Pine Schools.

Other Information :: :: :: :: ::

HOW TO ADDRESS YOUR CONCERNS

Anyone with questions, concerns or complaints involving school site-specific issues is encouraged to seek resolution at the school building level. Matters not resolved at the building level, or concerns or complaints involving district-wide issues, will be processed thoroughly by the appropriate district-level administrator, as described in KL-AR: Public Complaints. Alleged criminal acts should be brought directly to the attention of the superintendent. Policies describing the method of filing and processing a complaint can be found at our website, www.bend.k12.or.us

DISTRICT POLICIES AND ADMINISTRATIVE REGULATIONS ARE AVAILABLE ONLINE

Bend-La Pine Schools Administrative Policies and Regulations are periodically adjusted to comply with changes in state and federal laws. While Bend-La Pine Schools makes every effort to keep the yearly Family Handbook and Calendar up to date, some changes to policies may be made after publication.

A complete listing of Administrative Policies and Regulations is available on our website, www.bend.k12.or.us.

ASBESTOS

Virtually any building constructed before the late 1970s contained some asbestos. Intact and undisturbed asbestos materials generally do not pose a health risk. Asbestos materials, however, can become hazardous when, due to damage or deterioration over time, they release fibers. Bend-La Pine Schools has developed an asbestos management plan to monitor the safety of its buildings. You can review a copy of this plan in the school district maintenance office during regular business hours.

CUSTODY AND PARENTING TIME

On occasion, parental disputes impact a child's school experience and necessitate the involvement of school officials. Parents/guardians are reminded to provide their child's school with a copy of the most recent court order or judgment concerning custody, parenting time and other parental rights. Unless the school is provided with this information, school officials will afford both parents/guardians equal rights with respect to their child, including the right to visit the child during school hours, to volunteer in the child's classroom, to check the child out of school upon showing proper identification, to receive information and notices from the school about the child, and to access the child's educational records. Please see JECAC-AR: Parental Custody for more information.

VIDEO SURVEILLANCE

Video cameras will be used on district property and school transportation vehicles to ensure the health, welfare and safety of all staff, students and visitors to district property, riding in school transportation vehicles, and to safeguard district property, facilities and equipment.

Bend-La Pine Schools
An Educational Site of Administrative School District #1
520 N.W. Wall St.
Bend, OR 97703

Non-Profit
Organization
U.S. Postage
PAID
BEND, OR
Permit No. 163

