



## OPERATIONAL BLUEPRINT FOR SCHOOL REENTRY 2020-21

Updated 10/30/2020

Under ODE's **Ready Schools, Safe Learners** guidance, each school<sup>1</sup> has been directed to submit a plan to the district<sup>2</sup> in order to provide on-site and/or hybrid instruction. Districts must submit each school's plan to the local school board and make the plans available to the public. This form is to be used to document a district's, school's or program's plan to ensure students can return for the 2020-21 school year, in some form, in accordance with Executive Order 20-25(10). Schools must use the [Ready Schools, Safe Learners guidance](#) document as they complete their Operational Blueprint for Reentry. ODE recommends plan development be inclusive of, but not limited to, school-based administrators, teachers and school staff, health and nursing staff, association leadership, nutrition services, transportation services, tribal consultation,<sup>3</sup> parents and others for purposes of providing expertise, developing broad understanding of the health protocols and carrying out plan implementation.

1. Please fill out information:

SCHOOL/DISTRICT/PROGRAM INFORMATION	
Name of School, District or Program	Pilot Butte Middle School
Key Contact Person for this Plan	Steve Stancliff
Phone Number of this Person	541-355-7400
Email Address of this Person	steve.stancliff@bend.k12.or.us
Sectors and position titles of those who informed the plan	<b>BLS Operational Blueprint Management Plan for COVID:</b> <ul style="list-style-type: none"><li>Paul Dean, BLS Safe and Health Schools Administrator, <a href="mailto:paul.dean@bend.k12.or.us">paul.dean@bend.k12.or.us</a>, 541-355-1108</li><li>Scott Bojanowski, Bend-La Pine Schools Safety Coordinator, <a href="mailto:scott.bojanowski@bend.k12.or.us">scott.bojanowski@bend.k12.or.us</a></li><li>Joe Hallums, HDESD Safety Specialist, <a href="mailto:joe.hallums@hdesd.org">joe.hallums@hdesd.org</a></li><li>Anna Higgins, Chief Strategy/Innovation <a href="mailto:Officeranna.higgins@hdesd.org">Officeranna.higgins@hdesd.org</a></li><li>Shay Mikalson, Chief Student Success Officer, <a href="mailto:shay.mikalson@hdesd.org">shay.mikalson@hdesd.org</a></li><li>Tami Pike, Heath Services Supervisor, <a href="mailto:tami.pike@bend.k12.or.us">tami.pike@bend.k12.or.us</a></li><li>Julianne Repman, HDESD Regional Safety Director, <a href="mailto:julianne.repman@bend.k12.or.us">julianne.repman@bend.k12.or.us</a></li><li>Rachel Wentte-Chaney, Chief Information Officer, <a href="mailto:rachel.wentte-chaney@hdesd.org">rachel.wentte-chaney@hdesd.org</a></li></ul> <b>Individual School Safety Plans:</b> <p>Led by our building administrators, each school selected staff to be part of their school safety team. Those members may include the Head Engineer, Nurse, Office Manager, School Resource Officer, Athletic Director/Secretary, and certified/classified staff.</p>
Local public health office(s) or officers(s)	Deschutes County Public Health general line 541-322-7400 or CD Line 541-322-7418.
Name of person Designated to Establish, Implement and Enforce Physical Distancing Requirements	Steve Stancliff
Intended Effective Dates for this Plan	November 18, 2020 – June 2021 (as county/state metrics allow)
ESD Region	HDESD

<sup>1</sup> For the purposes of this guidance: "school" refers to all public schools, including public charter schools, public virtual charter schools, alternative education programs, private schools and the Oregon School for the Deaf. For ease of readability, "school" will be used inclusively to reference all of these settings.

<sup>2</sup> For the purposes of this guidance: "district" refers to a school district, education service district, public charter school sponsoring district, virtual public charter school sponsoring district, state sponsored public charter school, alternative education programs, private schools, and the Oregon School for the Deaf.

<sup>3</sup> Tribal Consultation is a separate process from stakeholder engagement; consultation recognizes and affirms tribal rights of self-government and tribal sovereignty, and mandates state government to work with American Indian nations on a [government-to-government](#) basis.

2. Please list efforts you have made to engage your community (public health information sharing, taking feedback on planning, etc.) in preparing for school in 2020-21. Include information on engagement with communities often underserved and marginalized and those communities disproportionately impacted by COVID-19.

Bend – La Pine Schools (BLS) partnered with **Better Together** to survey families last spring about distance learning. A report was produced (available upon request) to assist BLS in identifying strengths, areas for growth and recommendations for CDL during the 2020-21 school year. That report was shared with administrators, TLC coaches and teacher teams who developed grade band Standards of Practice for so that consistency, rigor and connectiveness were priorities for the upcoming year.

District leaders took part in multiple virtual town hall meetings in July/August with certified teachers and classified staff to explain and seek input about the hybrid and CDL plans.

Our school board held virtual meetings attended by hundreds of community members to explain and seek input on re-opening plans.

Families were also invited to join Bend-La Pine Schools' educators to learn more about Comprehensive Distance Learning at elementary, middle and high schools during live town hall events. Families heard from teachers and school leaders about schedules, expectations, support and more.

**Elementary:**

- 6 p.m. Wednesday, Sept. 2 **SPANISH**
- 6 p.m. Thursday, Sept. 3 **ENGLISH**

**Middle and High School:**

- 7:30 p.m. Wednesday, Sept. 2 **SPANISH**
- 7:30 p.m. Thursday, Sept. 3 **ENGLISH**

Deschutes County Health assisted BLS in reviewing and suggesting edits to our overall Management Plan as well as our school safety teams' COVID checklist template that was the backbone of each individual school's planning process to satisfy domains 1-3 below.

Our [Return To School webpage](#) provides comprehensive information about our community engagement efforts and overall planning for the 2020-21 school year. It is updated regularly.

3. Indicate which instructional model will be used.

*Select One:*

☒ **On-Site Learning**      ☒ **Hybrid Learning**      ☒ **Comprehensive Distance Learning**

4. If you selected Comprehensive Distance Learning, you only have to fill out the green portion of the Operational Blueprint for Reentry (i.e., page 2 in the initial template).
5. If you selected On-Site Learning or Hybrid Learning, you have to fill out the blue portion of the Operational Blueprint for Reentry (i.e., pages 3-19 in the initial template) and [submit online](https://app.smartsheet.com/b/form/a4dedb5185d94966b1dff75e4874c8a). (<https://app.smartsheet.com/b/form/a4dedb5185d94966b1dff75e4874c8a>) by August 17, 2020 or prior to the beginning of the 2020-21 school year.

\* **Note:** Private schools are required to comply with only sections 1-3 of the **Ready Schools, Safe Learners** guidance.

## REQUIREMENTS FOR COMPREHENSIVE DISTANCE LEARNING OPERATIONAL BLUEPRINT

This section must be completed by any school that is seeking to provide instruction through Comprehensive Distance Learning. For Private Schools, completing this section is optional (not required). Schools providing On-Site or Hybrid Instructional Models do not need to complete this section.

Describe why you are selecting Comprehensive Distance Learning as the school's Instructional Model for the effective dates of this plan.

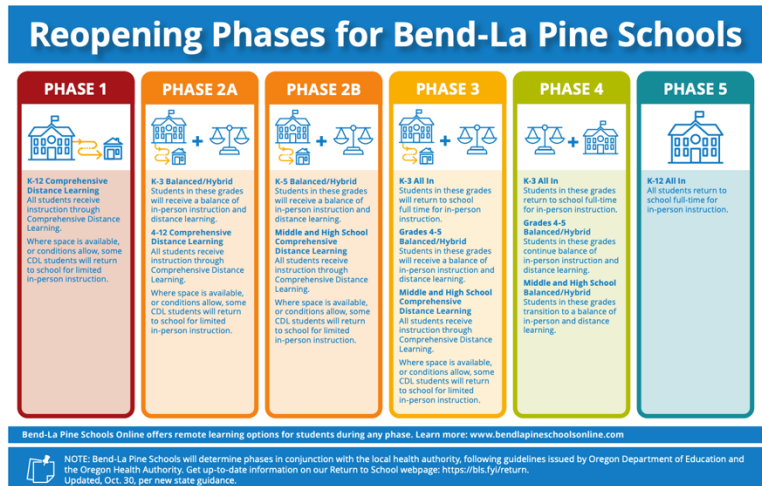
Under RSSL Version 4.0 metrics, Deschutes County did not meet metrics during the initial release of the 2-week case count (reported by ODE/OHA on November 2<sup>nd</sup>).

In completing this portion of the Blueprint you are attesting that you have reviewed the Comprehensive Distance Learning Guidance. [Here is a link to the overview of CDL Requirements](#). Please name any requirements you need ODE to review for any possible flexibility or waiver.

BLS' collaborative work in preparation for CDL is available on our district website <https://www.bend.k12.or.us/district/academics/cdl>

Describe the school's plan, including the anticipated timeline, for returning to Hybrid Learning or On-Site Learning consistent with the *Ready Schools, Safe Learners* guidance.

The graphic below outlines our phased reopening plan. We will initiate Phase 2A within two weeks of favorable metrics being released.



The remainder of this operational blueprint is not applicable to schools operating a Comprehensive Distance Learning Model.

## ESSENTIAL REQUIREMENTS FOR HYBRID / ON-SITE OPERATIONAL BLUEPRINT

This section must be completed by any school that is providing instruction through On-Site or Hybrid Instructional Models.



## 0. Health Metrics for Returning to In-Person Instruction

### OPERATING WITHIN THE GENERAL METRICS

- ☐ The school meets eligibility for the “Safe Harbor Clause” as they were operating with in-person instruction in compliance with previous metrics, including under any prior exceptions. *Unless operating under an exception in section 0d of the **Ready Schools, Safe Learners** guidance, if the school is located in a county with metrics in the “Distance Learning” column of the metrics chart, then the school must transition to distance learning by January 4, 2021.*
- ☐ The school currently meets the General Metrics to successfully reopen for in-person instruction in an On-Site or Hybrid (On-Site and Distance Learning) model. *If this box cannot yet be checked, the school must return to Comprehensive Distance Learning but may be able to provide some in-person instruction through the exceptions noted below.*

### EXCEPTIONS FOR SPECIFIC IN-PERSON INSTRUCTION WHERE REQUIRED CONDITIONS ARE MET

- ☐ The school currently meets the criteria required to provide limited in-person instruction (LIPI) for specific groups of students (see section 0d(1) of the **Ready Schools, Safe Learners** guidance).
- ☐ The school is small and remote (enrollment  $\leq 75$ ) and the LPHA has established that the school currently meets the criteria required for small remote schools (see section 0d(2) of the **Ready Schools, Safe Learners** guidance).
- ☐ The school currently meets the conditions required for to provide in-person instruction under the low population density, large population county exception (see section 0d(3) of the **Ready Schools, Safe Learners** guidance).
- ☐ The school is eligible for an emergency waiver for in-person instruction due to the impact of wildfires (see section 0d(4) of the **Ready Schools, Safe Learners** guidance).



## 1. Public Health Protocols

### 1a. COMMUNICABLE DISEASE MANAGEMENT PLAN FOR COVID-19

OHA/ODE Requirements	Hybrid/Onsite Plan
<ul style="list-style-type: none"> <li><input type="checkbox"/> Implement measures to limit the spread of COVID-19 within the school setting.</li> <li><input type="checkbox"/> Update written Communicable Disease Management Plan to specifically address the prevention of the spread of COVID-19. Examples are located in the <a href="#">Oregon School Nurses Association (OSNA) COVID-19 Toolkit</a>.</li> <li><input type="checkbox"/> Designate a person at each school to establish, implement and enforce physical distancing requirements, consistent with this guidance and other guidance from OHA.</li> <li><input type="checkbox"/> Include names of the LPHA staff, school nurses, and other medical experts who provided support and resources to the district/school policies and plans. Review relevant local, state, and national evidence to inform plan.</li> <li><input type="checkbox"/> Process and procedures established to train all staff in sections 1 - 3 of the <b>Ready Schools, Safe Learners</b> guidance. Consider conducting the training virtually, or, if in-person, ensure physical distancing is maintained to the maximum extent possible.</li> <li><input type="checkbox"/> Protocol to notify the local public health authority (<a href="#">LPHA Directory by County</a>) of any confirmed COVID-19 cases among students or staff.</li> <li><input type="checkbox"/> Plans for systematic disinfection of classrooms, offices, bathrooms and activity areas.</li> <li><input type="checkbox"/> Process to report to the LPHA any cluster of any illness among staff or students.</li> <li><input type="checkbox"/> Protocol to cooperate with the LPHA recommendations.</li> <li><input type="checkbox"/> Provide all logs and information to the LPHA in a timely manner.</li> </ul>	<p>Bend – La Pine school district:</p> <ul style="list-style-type: none"> <li>• 5th largest school district in Oregon</li> <li>• 33 schools, plus two charter schools</li> <li>• 18,375 students</li> <li>• 2,005 staff members (Second Largest Employer in Central Oregon)</li> <li>• 1,600 square miles make up the Bend-La Pine Schools attendance area</li> </ul> <p>Due to our size, we decided to coordinated the majority of our blueprint planning into one document. The <b>BLS Operational Blueprint Management Plan for COVID</b> and supporting documents (like the Communicable Disease Plan, our District Cleaning Protocols and the Exclusion &amp; Quarantine Flow Chart) can be accessed on our <a href="#">Return To School webpage</a> in the right hand column (see screenshot below)</p>

OHA/ODE Requirements	Hybrid/Onsite Plan
<ul style="list-style-type: none"> <li><input type="checkbox"/> Protocol for screening students and staff for symptoms (see section 1f of the <b>Ready Schools, Safe Learners</b> guidance).</li> <li><input type="checkbox"/> Protocol to isolate any ill or exposed persons from physical contact with others.</li> <li><input type="checkbox"/> Protocol for communicating potential COVID-19 cases to the school community and other stakeholders (see section 1e of the <b>Ready Schools, Safe Learners</b> guidance).</li> <li><input type="checkbox"/> Create a system for maintaining daily logs for each student/cohort for the purposes of contact tracing. This system needs to be made in consultation with a school/district nurse or an LPHA official. Sample logs are available as a part of the <a href="#">Oregon School Nurses Association COVID-19 Toolkit</a>. <ul style="list-style-type: none"> <li>• If a student(s) is part of a stable cohort (a group of students that are consistently in contact with each other or in multiple cohort groups) that conform to the requirements of cohorting (see section 1d of the <b>Ready Schools, Safe Learners</b> guidance), the daily log may be maintained for the cohort.</li> <li>• If a student(s) is not part of a stable cohort, then an individual student log must be maintained.</li> </ul> </li> <li><input type="checkbox"/> Required components of individual daily student/cohort logs include: <ul style="list-style-type: none"> <li>• Child's name</li> <li>• Drop off/pick up time</li> <li>• Parent/guardian name and emergency contact information</li> <li>• All staff (including itinerant staff, district staff, substitutes, and guest teachers) names and phone numbers who interact with a stable cohort or individual student</li> </ul> </li> <li><input type="checkbox"/> Protocol to record/keep daily logs to be used for contact tracing for a minimum of four weeks to assist the LPHA as needed.</li> <li><input type="checkbox"/> Process to ensure that all itinerant and all district staff (maintenance, administrative, delivery, nutrition, and any other staff) who move between buildings keep a log or calendar with a running four-week history of their time in each school building and who they were in contact with at each site.</li> <li><input type="checkbox"/> Process to ensure that the school reports to and consults with the LPHA regarding cleaning and possible classroom or program closure if anyone who has entered school is diagnosed with COVID-19.</li> <li><input type="checkbox"/> Designate a staff member and process to ensure that the school provides updated information regarding current instructional models and student counts and reports these data in <a href="#">ODE's COVID-19 Weekly School Status</a> system.</li> <li><input type="checkbox"/> Protocol to respond to potential outbreaks (see section 3 of the <b>Ready Schools, Safe Learners</b> guidance).</li> </ul>	<div>  <p>OPERATIONAL BLUEPRINTS FOR SCHOOL REENTRY 2020-21</p> <p>Bend-La Pine Schools has created blueprints for the 2020-2021 school re-opening plans. <a href="#">Please click here</a> to view the individual school plans.</p> <p><a href="#">BLS Operational Blueprint Management Plan</a></p> <p><a href="#">BLS COVID-19 Communicable Disease Management Plan</a></p> <p><a href="#">BLS Cleaning &amp; Disinfecting Plan</a></p> <p><a href="#">COVID Exclusion and Quarantine Protocols at School Settings</a></p> <p><a href="#">Planning for COVID-19 Scenarios in Schools</a></p> </div> <p>Bend – La Pine created a 20-minute COVID-19 training video aligned to blueprint requirement and tracked staff completion of it.</p> <p>We've established paper and digital contact tracing logs for staff. Student contact tracing will be done through synergy.</p> <p>We have templates for positive COVID communications.</p>

### 1b. HIGH-RISK POPULATIONS

OHA/ODE Requirements	Hybrid/Onsite Plan
<ul style="list-style-type: none"> <li><input type="checkbox"/> Serve students in high-risk population(s) whether learning is happening through On-Site, Hybrid (partially On-Site and partially Comprehensive Distance Learning models), or Comprehensive Distance Learning models.</li> </ul> <p><b>Medically Fragile, Complex and Nursing-Dependent Student Requirements</b></p> <ul style="list-style-type: none"> <li><input type="checkbox"/> All districts must account for students who have health conditions that require additional nursing services. Oregon law (<a href="#">ORS 336.201</a>) defines three levels of severity related to required nursing services: <ol style="list-style-type: none"> <li>1. Medically Complex: Are students who may have an unstable health condition and who may require daily professional nursing services.</li> </ol> </li> </ul>	<p>BLS Special Program director and staff have designed procedures for addressing the needs of our medically fragile, complex and nursing-dependent students</p>

OHA/ODE Requirements	Hybrid/Onsite Plan
<p>2. Medically Fragile: Are students who may have a life-threatening health condition and who may require immediate professional nursing services.</p> <p>3. Nursing-Dependent: Are students who have an unstable or life-threatening health condition and who require daily, direct, and continuous professional nursing services.</p> <p><input type="checkbox"/> Staff and school administrators, in partnership with school nurses, or other school health providers, should work with interdisciplinary teams to address individual student needs. The school registered nurse (RN) is responsible for nursing care provided to individual students as outlined in ODE guidance and state law:</p> <ul style="list-style-type: none"> <li>• Communicate with parents and health care providers to determine return to school status and current needs of the student.</li> <li>• Coordinate and update other health services the student may be receiving in addition to nursing services. This may include speech language pathology, occupational therapy, physical therapy, as well as behavioral and mental health services.</li> <li>• Modify Health Management Plans, Care Plans, IEPs, or 504 or other student-level medical plans, as indicated, to address current health care considerations.</li> <li>• The RN practicing in the school setting should be supported to remain up to date on current guidelines and access professional support such as evidence-based resources from the <a href="#">Oregon School Nurses Association</a>.</li> <li>• Service provision should consider health and safety as well as legal standards.</li> <li>• Appropriate medical-grade personal protective equipment (PPE) should be made available to <a href="#">nurses and other health providers</a>.</li> <li>• Work with an interdisciplinary team to meet requirements of ADA and FAPE.</li> <li>• High-risk individuals may meet criteria for exclusion during a local health crisis.</li> <li>• Refer to updated state and national guidance and resources such as: <ul style="list-style-type: none"> <li>○ U.S. Department of Education Supplemental Fact Sheet: Addressing the Risk of COVID-19 in Preschool, Elementary and Secondary Schools While Serving Children with Disabilities from March 21, 2020.</li> <li>○ ODE guidance updates for Special Education. Example from March 11, 2020.</li> <li>○ OAR 581-015-2000 Special Education, requires districts to provide 'school health services and school nurse services' as part of the 'related services' in order 'to assist a child with a disability to benefit from special education.'</li> <li>○ OAR 333-019-0010 Public Health: Investigation and Control of Diseases: General Powers and Responsibilities, outlines authority and responsibilities for school exclusion.</li> </ul> </li> </ul>	

#### 1c. PHYSICAL DISTANCING

OHA/ODE Requirements	Hybrid/Onsite Plan
<p><input type="checkbox"/> Establish a minimum of 35 square feet per person when determining room capacity. Calculate only with usable classroom space, understanding that desks and room set-up will require use</p>	<p>Each school's safety team is completing a COVID-19 checklist to ensure compliance with all 1-3 domains and based upon the unique floorplan, grade levels and culture within each building.</p>

OHA/ODE Requirements	Hybrid/Onsite Plan
<p>of all space in the calculation. This also applies for professional development and staff gatherings.</p> <ul style="list-style-type: none"> <li><input type="checkbox"/> Support physical distancing in all daily activities and instruction, maintaining six feet between individuals to the maximum extent possible.</li> <li><input type="checkbox"/> Minimize time standing in lines and take steps to ensure that six feet of distance between students is maintained, including marking spacing on floor, one-way traffic flow in constrained spaces, etc.</li> <li><input type="checkbox"/> Schedule modifications to limit the number of students in the building (e.g., rotating groups by days or location, staggered schedules to avoid hallway crowding and gathering).</li> <li><input type="checkbox"/> Plan for students who will need additional support in learning how to maintain physical distancing requirements. Provide instruction; don't employ punitive discipline.</li> <li><input type="checkbox"/> Staff must maintain physical distancing during all staff meetings and conferences, or consider remote web-based meetings.</li> </ul>	<p>The school team will make a copy of <a href="#">School Safety Team COVID-19 Checklist</a>, fill it out and upload it to a shared google folder for the district safety team to review. The google drive will be shared internally and with the Deschutes County Health Department.</p> <p>In addition, each School's Safety Team COVID-19 Checklist will be uploaded to the RTS website for public access.</p>

#### 1d. COHORTING

OHA/ODE Requirements	Hybrid/Onsite Plan
<ul style="list-style-type: none"> <li><input type="checkbox"/> Where feasible, establish stable cohorts: groups shall be no larger than can be accommodated by the space available to provide 35 square feet per person, including staff. <ul style="list-style-type: none"> <li>• The smaller the cohort, the less risk of spreading disease. As cohort groups increase in size, the risk of spreading disease increases.</li> </ul> </li> <li><input type="checkbox"/> Students cannot be part of any single cohort, or part of multiple cohorts that exceed a total of 100 people within the educational week. Schools must plan to limit cohort sizes to allow for efficient contact-tracing and minimal risk for exposure. Cohorts may change week-to-week, but must be stable within the educational week.</li> <li><input type="checkbox"/> Each school must have a system for daily logs to ensure contact tracing among the cohort (see section 1a of the <b>Ready Schools, Safe Learners</b> guidance).</li> <li><input type="checkbox"/> Minimize interaction between students in different stable cohorts (e.g., access to restrooms, activities, common areas). Provide access to All Gender/Gender Neutral restrooms.</li> <li><input type="checkbox"/> Cleaning and disinfecting surfaces (e.g., desks, door handles, etc.) must be maintained between multiple student uses, even in the same cohort.</li> <li><input type="checkbox"/> Design cohorts such that all students (including those protected under ADA and IDEA) maintain access to general education, grade-level academic content standards, and peers.</li> <li><input type="checkbox"/> Staff who interact with multiple stable cohorts must wash/sanitize their hands between interactions with different stable cohorts.</li> </ul>	<p>Each school's safety team is completing a COVID-19 checklist to ensure compliance with all 1-3 domains and based upon the unique floorplan, grade levels and culture within their building.</p> <p>In hybrid, average cohort sizes will be:</p> <p>ES: 15-25 people MS: 45-55 people HS: 75-85 people</p> <p>If K-3 were to go all-in, cohort sizes would rise to approximately 67 students per grade level.</p>

#### 1e. PUBLIC HEALTH COMMUNICATION

OHA/ODE Requirements	Hybrid/Onsite Plan
<ul style="list-style-type: none"> <li><input type="checkbox"/> Communicate to staff at the start of On-Site instruction and at periodic intervals explaining infection control measures that are being implemented to prevent spread of disease.</li> <li><input type="checkbox"/> Develop protocols for communicating with students, families and staff who have come into close contact with a person who has COVID-19. <ul style="list-style-type: none"> <li>• The definition of exposure is being within 6 feet of a person who has COVID-19 for at least 15 cumulative minutes in a day.</li> </ul> </li> <li><input type="checkbox"/> Develop protocols for communicating immediately with staff, families, and the school community when a new case(s) of COVID-19 is diagnosed in students or staff members, including a description of how the school or district is responding.</li> <li><input type="checkbox"/> Provide all information in languages and formats accessible to the school community.</li> </ul>	<p>Sample communication templates have been developed and stored in a shared google drive.</p>



### 1f. ENTRY AND SCREENING

OHA/ODE Requirements	Hybrid/Onsite Plan
<input type="checkbox"/> Direct students and staff to stay home if they, or anyone in their homes or community living spaces, have COVID-19 symptoms, or if anyone in their home or community living spaces has COVID-19. COVID-19 symptoms are as follows: <ul style="list-style-type: none"> <li>Primary symptoms of concern: cough, fever (temperature of 100.4°F or higher) or chills, shortness of breath, difficulty breathing, or new loss of taste or smell.</li> <li>Note that muscle pain, headache, sore throat, diarrhea, nausea, vomiting, <i>new</i> nasal congestion, and runny nose are also symptoms often associated with COVID-19. More information about COVID-19 symptoms is available <a href="#">from CDC</a>.</li> <li>In addition to COVID-19 symptoms, students must be excluded from school for signs of other infectious diseases, per existing school policy and protocols. See pages 9-11 of OHA/ODE <a href="#">Communicable Disease Guidance for Schools</a>.</li> <li>Emergency signs that require immediate medical attention: <ul style="list-style-type: none"> <li>Trouble breathing</li> <li>Persistent pain or pressure in the chest</li> <li>New confusion or inability to awaken</li> <li>Bluish lips or face (lighter skin); greyish lips or face (darker skin)</li> <li>Other severe symptoms</li> </ul> </li> </ul> <input type="checkbox"/> Screen all students and staff for symptoms on entry to bus/school every day. This can be done visually and/or with confirmation from a parent/caregiver/guardian. Staff members can self-screen and attest to their own health. <ul style="list-style-type: none"> <li>Anyone displaying or reporting the primary symptoms of concern must be isolated (see section 1i of the <b>Ready Schools, Safe Learners</b> guidance) and sent home as soon as possible. <a href="#">See table "Planning for COVID-19 Scenarios in Schools."</a></li> <li><a href="#">Additional guidance</a> for nurses and health staff.</li> </ul> <input type="checkbox"/> Follow LPHA advice on restricting from school any student or staff known to have been exposed (e.g., by a household member) to COVID-19. <a href="#">See table "Planning for COVID-19 Scenarios in Schools."</a>	<p>Our paper and digital check-in procedures for staff require them to acknowledge:</p> <ol style="list-style-type: none"> <li>In the past 24 hours I have not had any symptoms of COVID-19 including: cough, fever of 100.4° or greater, chills, shortness of breath or difficulty breathing, sore throat, muscle pain, new loss of taste or smell, nausea, vomiting, diarrhea, nasal congestion or runny nose.</li> <li>I have not taken any fever reducing medication in the last 24 hours to treat a fever.</li> <li>I have not tested positive for COVID-19 in the past 10 days.</li> <li>I have not been in close contact with someone with COVID-19 or with someone who is awaiting COVID-19 test results recommended by a health care professional or health department in the past 14 days.</li> <li>I will wash my hands or use approved hand sanitizer (if hand washing not available) upon entry and exit of the building.</li> <li>I understand that I must wear a face covering at all times while in the building unless I am eating, drinking or am in my enclosed office work space by myself.</li> </ol> <p>Each school's safety team is completing a COVID-19 checklist to ensure compliance with all 1-3 domains and based upon the unique floorplan, grade levels and culture within their building.</p>
<input type="checkbox"/> Staff or students with a chronic or baseline cough that has worsened or is not well-controlled with medication must be excluded from school. Do not exclude staff or students who have other symptoms that are chronic or baseline symptoms (e.g., asthma, allergies, etc.) from school.	
<input type="checkbox"/> Hand hygiene on entry to school every day: wash with soap and water for 20 seconds or use an alcohol-based hand sanitizer with 60-95% alcohol.	

### 1g. VISITORS/VOLUNTEERS

OHA/ODE Requirements	Hybrid/Onsite Plan
<input type="checkbox"/> Restrict non-essential visitors/volunteers. <ul style="list-style-type: none"> <li>Examples of essential visitors include: DHS Child Protective Services, Law Enforcement, etc.</li> <li>Examples of non-essential visitors/volunteers include: Parent Teacher Association (PTA), classroom volunteers, etc.</li> </ul> <input type="checkbox"/> Screen all visitors/volunteers for symptoms upon every entry. Restrict from school property any visitor known to have been exposed to COVID-19. <a href="#">See table "Planning for COVID-19 Scenarios in Schools."</a>	<p>Each school's safety team is completing a COVID-19 checklist to ensure compliance with all 1-3 domains and based upon the unique floorplan, grade levels and culture within their building.</p>
<input type="checkbox"/> Visitors/volunteers must wash or sanitize their hands upon entry and exit.	
<input type="checkbox"/> Visitors/volunteers must maintain six-foot distancing, wear face coverings, and adhere to all other provisions of this guidance.	



## 1h. FACE COVERINGS, FACE SHIELDS, AND CLEAR PLASTIC BARRIERS

OHA/ODE Requirements	Hybrid/Onsite Plan
<p><input type="checkbox"/> Face coverings or face shields for all staff, contractors, other service providers, visitors or volunteers following <a href="#">CDC guidelines for Face Coverings</a>. Individuals may remove their face coverings while working alone in private offices. Face shields are an acceptable alternative when a person has a medical condition that prevents them from wearing a mask or face covering, when people need to see mouth and tongue motions in order to communicate, or when an individual is speaking to an audience for a short period of time and clear communication is otherwise not possible.</p> <p><input type="checkbox"/> Face coverings or face shields for all students in grades Kindergarten and up following <a href="#">CDC guidelines for Face Coverings</a>. Face shields are an acceptable alternative when a student has a medical condition that prevents them from wearing a mask or face covering, or when people need to see the student's mouth and tongue motions in order to communicate.</p> <p><input type="checkbox"/> Face coverings should be worn both indoors and outdoors, including during outdoor recess.</p> <p><input type="checkbox"/> Group mask breaks" or "full classroom mask breaks" are not allowed. If a student removes a face covering, or demonstrates a need to remove the face covering for a short-period of time:</p> <ul style="list-style-type: none"> <li>• Provide space away from peers while the face covering is removed. In the classroom setting, an example could be a designated chair where a student can sit and take a 15 minute "sensory break;" <ul style="list-style-type: none"> <li>○ Students must not be left alone or unsupervised;</li> <li>○ Designated area or chair must be appropriately distanced from other students and of a material that is easily wiped down for disinfection after each use;</li> </ul> </li> <li>• Provide additional instructional supports to effectively wear a face covering;</li> <li>• Provide students adequate support to re-engage in safely wearing a face covering;</li> <li>• Students cannot be discriminated against or disciplined for an inability to safely wear a face covering during the school day.</li> </ul> <p><input type="checkbox"/> Face masks for school RNs or other medical personnel when providing direct contact care and monitoring of staff/students displaying symptoms. School nurses shall also wear appropriate Personal Protective Equipment (PPE) for their role.</p> <ul style="list-style-type: none"> <li>• <a href="#">Additional guidance</a> for nurses and health staff.</li> </ul> <p><b>Protections under the ADA or IDEA:</b></p> <p><input type="checkbox"/> If any student requires an accommodation to meet the requirement for face coverings, districts and schools must limit the student's proximity to students and staff to the extent possible to minimize the possibility of exposure. Appropriate accommodations could include:</p> <ul style="list-style-type: none"> <li>• Offering different types of face coverings and face shields that may meet the needs of the student.</li> <li>• Spaces away from peers while the face covering is removed; students must not be left alone or unsupervised.</li> <li>• Short periods of the educational day that do not include wearing the face covering, while following the other health strategies to reduce the spread of disease.</li> <li>• Additional instructional supports to effectively wear a face covering.</li> </ul> <p><input type="checkbox"/> For students with existing medical conditions and a physician's orders to not wear face coverings, or other health related concerns, schools/districts <b>must not</b> deny any in-person instruction.</p> <p><input type="checkbox"/> Schools and districts must comply with the established IEP/504 plan prior to the closure of in-person instruction in March of 2020,</p>	<p>Each school's safety team is completing a COVID-19 checklist to ensure compliance with all 1-3 domains and based upon the unique floorplan, grade levels and culture within their building.</p> <p>BLS has adopted a more stringent face mask requirement.</p> <p><b>Mask Policy (Restrictions on Face Shield Use):</b> A cloth, paper, or disposable face mask (without valves) that covers the nose and the mouth is the requirement for all BLS students and staff with some exceptions. When exceptions apply, a face shield is permissible, but other safety practices should be implemented, such as maintaining more than 6 feet of social distancing and/or added ventilation of fresh air.</p> <p>The exceptions are:</p> <ol style="list-style-type: none"> <li>A. For provisions applicable to staff/students protected by ADA or IDEA</li> <li>B. Bus drivers when actively driving and operating the bus (no mask/shield required)</li> <li>C. For specific and time-limited instructional needs such as speech and language, LIPS reading group, ELL lessons or other examples when viewing a teacher's or student's mouth is essential to that portion of the lesson. As soon as possible within the lesson, masks should replace the shields;</li> <li>D. For younger children moving into in-person education who exhibit severe emotional dysregulation when wearing a mask. Staff should employ strategies to transition them from shields into mask wearing: mindfulness exercises, increase in the frequency of outdoor mask breaks, and other trauma-informed best practices.</li> <li>E. People who are deaf or hard of hearing, or those who care for or interact with a person who is hearing impaired.</li> <li>F. Other time-limited exceptions of short durations may be made with administrative knowledge.</li> </ol> <p>A cloth mask with a clear panel is an acceptable option, as is the use of a shield over a mask for added protection.</p> <p>Individuals working in a private, single use workspace and outside workers who can maintain at least 6 feet of physical distancing do not need to wear a mask or shield.</p> <p>The above language is subject to revisions and will be communicated to our staff and community should that occur and be publicly posted on our RTS website.</p>

OHA/ODE Requirements	Hybrid/Onsite Plan
<p>or the current plan in effect for the student if appropriately developed after March of 2020.</p> <ul style="list-style-type: none"> <li>If a student eligible for, or receiving services under a 504/IEP, <b>cannot</b> wear a face covering due to the nature of the disability, the school or district must: <ol style="list-style-type: none"> <li>Review the 504/IEP to ensure access to instruction in a manner comparable to what was originally established in the student's plan including on-site instruction with accommodations or adjustments.</li> <li>Not make placement determinations solely on the inability to wear a face covering.</li> <li>Include updates to accommodations and modifications to support students in plans.</li> </ol> </li> <li>For students protected under ADA/IDEA, who abstain from wearing a face covering, or students whose families determine the student will not wear a face covering, the school or district must: <ol style="list-style-type: none"> <li>Review the 504/IEP to ensure access to instruction in a manner comparable to what was originally established in the student's plan.</li> <li>The team must determine that the disability is not prohibiting the student from meeting the requirement. <ul style="list-style-type: none"> <li>If the team determines that the disability is prohibiting the student from meeting the requirement, follow the requirements for students eligible for, or receiving services under, a 504/IEP who cannot wear a face covering due to the nature of the disability,</li> <li>If a student's 504/IEP plan included supports/goals/instruction for behavior or social emotional learning, the school team must evaluate the student's plan prior to providing instruction through Comprehensive Distance Learning.</li> </ul> </li> <li>Hold a 504/IEP meeting to determine equitable access to educational opportunities which may include limited in-person instruction, on-site instruction with accommodations, or Comprehensive Distance Learning.</li> </ol> </li> </ul> <p><input type="checkbox"/> For students not currently served under an IEP or 504, districts must consider whether or not student inability to consistently wear a face covering or face shield as required is due to a disability. Ongoing inability to meet this requirement may be evidence of the need for an evaluation to determine eligibility for support under IDEA or Section 504.</p> <p><input type="checkbox"/> If a staff member requires an accommodation for the face covering or face shield requirements, districts and schools shall work to limit the staff member's proximity to students and staff to the extent possible to minimize the possibility of exposure.</p>	

#### 1i. ISOLATION AND QUARANTINE

OHA/ODE Requirements	Hybrid/Onsite Plan
<p><input type="checkbox"/> Protocols for exclusion and isolation for sick students and staff whether identified at the time of bus pick-up, arrival to school, or at any time during the school day.</p> <p><input type="checkbox"/> Protocols for screening students, as well as exclusion and isolation protocols for sick students and staff identified at the time of arrival or during the school day.</p> <ul style="list-style-type: none"> <li>Work with school nurses, health care providers, or other staff with expertise to determine necessary modifications to areas where staff/students will be isolated. If two students present COVID-19 symptoms at the same time, they must be isolated at once. If separate rooms are not available, ensure that six</li> </ul>	<p>Each school's safety team is completing a COVID-19 checklist to ensure compliance with all 1-3 domains and based upon the unique floorplan, grade levels and culture within their building.</p>

OHA/ODE Requirements	Hybrid/Onsite Plan
<p>feet distance is maintained. Do not assume they have the same illness.</p> <ul style="list-style-type: none"> <li>Consider required physical arrangements to reduce risk of disease transmission.</li> <li>Plan for the needs of generally well students who need medication or routine treatment, as well as students who may show signs of illness.</li> <li><a href="#">Additional guidance</a> for nurses and health staff for providing care to students with complex needs.</li> </ul> <p><input type="checkbox"/> Students and staff who report or develop symptoms must be isolated in a designated isolation area in the school, with adequate space and staff supervision and symptom monitoring by a school nurse, other school-based health care provider or school staff until they are able to go home. Anyone providing supervision and symptom monitoring must wear appropriate face covering or face shields.</p> <ul style="list-style-type: none"> <li>School nurse and health staff in close contact with symptomatic individuals (less than 6 feet) must wear a medical-grade face mask. Other Personal Protective Equipment (PPE) may be needed depending on symptoms and care provided. Consult a nurse or health care professional regarding appropriate use of PPE. Any PPE used during care of a symptomatic individual must be properly removed and disposed of prior to exiting the care space.</li> <li>After removing PPE, hands shall be immediately cleaned with soap and water for at least 20 seconds. If soap and water are not available, hands can be cleaned with an alcohol-based hand sanitizer that contains 60-95% alcohol.</li> <li>If able to do so safely, a symptomatic individual shall wear a face covering.</li> <li>To reduce fear, anxiety, or shame related to isolation, provide a clear explanation of procedures, including use of PPE and handwashing.</li> </ul> <p><input type="checkbox"/> Establish procedures for safely transporting anyone who is sick to their home or to a health care facility.</p> <p><input type="checkbox"/> Staff and students who are ill must stay home from school and must be sent home if they become ill at school, particularly if they have COVID-19 symptoms. Refer to table in <a href="#">“Planning for COVID-19 Scenarios in Schools.”</a></p> <p><input type="checkbox"/> Involve school nurses, School Based Health Centers, or staff with related experience (Occupational or Physical Therapists) in development of protocols and assessment of symptoms (where staffing exists).</p> <p><input type="checkbox"/> Record and monitor the students and staff being isolated or sent home for the LPHA review.</p>	



## 2. Facilities and School Operations

Some activities and areas will have a higher risk for spread (e.g., band, choir, science labs, locker rooms). When engaging in these activities within the school setting, schools will need to consider additional physical distancing or conduct the activities outside (where feasible). Additionally, schools should consider sharing explicit risk statements for instructional and extra-curricular activities requiring additional considerations (see section 5f of the **Ready Schools, Safe Learners** guidance).

### 2a. ENROLLMENT

(Note: Section 2a does not apply to private schools.)

OHA/ODE Requirements	Hybrid/Onsite Plan
<input type="checkbox"/> Enroll all students (including foreign exchange students) following the standard Oregon Department of Education guidelines. <input type="checkbox"/> The temporary suspension of the 10-day drop rule does not change the rules for the initial enrollment date for students: <ul style="list-style-type: none"> <li>• The ADM enrollment date for a student is the first day of the student's actual attendance.</li> <li>• A student with fewer than 10 days of absence at the beginning of the school year may be counted in membership prior to the first day of attendance, but not prior to the first calendar day of the school year.</li> <li>• If a student does not attend during the first 10 session days of school, the student's ADM enrollment date must reflect the student's actual first day of attendance.</li> <li>• Students who were anticipated to be enrolled, but who do not attend at any time must not be enrolled and submitted in ADM.</li> </ul> <input type="checkbox"/> If a student has stopped attending for 10 or more days, districts must continue to try to engage the student. At a minimum, districts must attempt to contact these students and their families weekly to either encourage attendance or receive confirmation that the student has transferred or has withdrawn from school. This includes students who were scheduled to start the school year, but who have not yet attended. <input type="checkbox"/> When enrolling a student from another school, schools must request documentation from the prior school within 10 days of enrollment per OAR 581-021-0255 to make all parties aware of the transfer. Documentation obtained directly from the family does not relieve the school of this responsibility. After receiving documentation from another school that a student has enrolled, drop that student from your roll. <input type="checkbox"/> Design attendance policies to account for students who do not attend in-person due to student or family health and safety concerns. <input type="checkbox"/> When a student has a pre-excused absence or COVID-19 absence, the school district must reach out to offer support at least weekly until the student has resumed their education. <input type="checkbox"/> When a student is absent beyond 10 days and meets the criteria for continued enrollment due to the temporary suspension of the 10 day drop rule, continue to count them as absent for those days and include those days in your Cumulative ADM reporting.	<p>Our district synergy team has shared documentation and conducted training with office managers, attendance and counseling secretaries regarding enrollment practices aligned to section 2.</p> <p>School and district Family Connections teams will be developing outreach protocols for students disengaged from learning.</p>

## 2b. ATTENDANCE

*(Note: Section 2b does not apply to private schools.)*

OHA/ODE Requirements	Hybrid/Onsite Plan
<input type="checkbox"/> Grades K-5 (self-contained): Attendance must be taken at least once per day for all students enrolled in school, regardless of the instructional model (On-Site, Hybrid, Comprehensive Distance Learning, online schools). <input type="checkbox"/> Grades 6-12 (individual subject): Attendance must be taken at least once for each scheduled class that day for all students enrolled in school, regardless of the instructional model (On-Site, Hybrid, Comprehensive Distance Learning, online schools). <input type="checkbox"/> Alternative Programs: Some students are reported in ADM as enrolled in a non-standard program (such as tutorial time), with hours of instruction rather than days present and days absent. Attendance must be taken at least once for each scheduled interaction with each student, so that local systems can track the student's attendance and engagement. Reported hours of instruction continue to be those hours in which the student was present.	<p>A CDL/hybrid attendance document has been shared with building administrators, teachers and front office staff so accurate engagement is being tracked on a daily basis</p>

OHA/ODE Requirements	Hybrid/Onsite Plan
<input type="checkbox"/> Online schools that previously followed a two check-in per week attendance process must follow the Comprehensive Distance Learning requirements for checking and reporting attendance. <input type="checkbox"/> Provide families with clear and concise descriptions of student attendance and participation expectations as well as family involvement expectations that take into consideration the home environment, caregiver's work schedule, and mental/physical health.	

## 2c. TECHNOLOGY

OHA/ODE Requirements	Hybrid/Onsite Plan
<input type="checkbox"/> Update procedures for district-owned or school-owned devices to match cleaning requirements (see section 2d of the <b>Ready Schools, Safe Learners</b> guidance). <input type="checkbox"/> Procedures for return, inventory, updating, and redistributing district-owned devices must meet physical distancing requirements.	All BLS students have been provided with a district iPad.

## 2d. SCHOOL SPECIFIC FUNCTIONS/FACILITY FEATURES

OHA/ODE Requirements	Hybrid/Onsite Plan
<input type="checkbox"/> <b>Handwashing:</b> All people on campus shall be advised and encouraged to frequently wash their hands or use hand sanitizer. <input type="checkbox"/> <b>Equipment:</b> Develop and use sanitizing protocols for all equipment used by more than one individual or purchase equipment for individual use. <input type="checkbox"/> <b>Events:</b> Cancel, modify, or postpone field trips, assemblies, athletic events, practices, special performances, school-wide parent meetings and other large gatherings to meet requirements for physical distancing. <input type="checkbox"/> <b>Transitions/Hallways:</b> Limit transitions to the extent possible. Create hallway procedures to promote physical distancing and minimize gatherings. <input type="checkbox"/> <b>Personal Property:</b> Establish policies for personal property being brought to school (e.g., refillable water bottles, school supplies, headphones/earbuds, cell phones, books, instruments, etc.). If personal items are brought to school, they must be labeled prior to entering school and use shall be limited to the item owner.	Each school's safety team is completing a COVID-19 checklist to ensure compliance with all 1-3 domains and based upon the unique floorplan, grade levels and culture within their building.

## 2e. ARRIVAL AND DISMISSAL

OHA/ODE Requirements	Hybrid/Onsite Plan
<input type="checkbox"/> Physical distancing, stable cohorts, square footage, and cleaning requirements must be maintained during arrival and dismissal procedures. <input type="checkbox"/> Create schedule(s) and communicate staggered arrival and/or dismissal times. <input type="checkbox"/> Assign students or cohorts to an entrance; assign staff member(s) to conduct visual screenings (see section 1f of the <b>Ready Schools, Safe Learners</b> guidance). <input type="checkbox"/> Ensure accurate sign-in/sign-out protocols to help facilitate contact tracing by the LPHA. Sign-in procedures are not a replacement for entrance and screening requirements. Students entering school after arrival times must be screened for the primary symptoms of concern. <ul style="list-style-type: none"> <li>• Eliminate shared pen and paper sign-in/sign-out sheets.</li> <li>• Ensure hand sanitizer is available if signing children in or out on an electronic device.</li> </ul> <input type="checkbox"/> Ensure alcohol-based hand sanitizer (with 60-95% alcohol) dispensers are easily accessible near all entry doors and other high-traffic areas. Establish and clearly communicate procedures for keeping caregiver drop-off/pick-up as brief as possible.	Each school's safety team is completing a COVID-19 checklist to ensure compliance with all 1-3 domains and based upon the unique floorplan, grade levels and culture within their building.

## 2f. CLASSROOMS/REPURPOSED LEARNING SPACES

OHA/ODE Requirements	Hybrid/Onsite Plan
<ul style="list-style-type: none"> <li><input type="checkbox"/> <b>Seating:</b> Rearrange student desks and other seat spaces so that staff and students' physical bodies are six feet apart to the maximum extent possible while also maintaining 35 square feet per person; assign seating so students are in the same seat at all times.</li> <li><input type="checkbox"/> <b>Materials:</b> Avoid sharing of community supplies when possible (e.g., scissors, pencils, etc.). Clean these items frequently. Provide hand sanitizer and tissues for use by students and staff.</li> <li><input type="checkbox"/> <b>Handwashing:</b> Remind students (with signage and regular verbal reminders from staff) of the utmost importance of hand hygiene and respiratory etiquette. Respiratory etiquette means covering coughs and sneezes with an elbow or a tissue. Tissues shall be disposed of in a garbage can, then hands washed or sanitized immediately. <ul style="list-style-type: none"> <li>• Wash hands with soap and water for 20 seconds or use an alcohol-based hand sanitizer with 60-95% alcohol.</li> </ul> </li> </ul>	<p>Each school's safety team is completing a COVID-19 checklist to ensure compliance with all 1-3 domains and based upon the unique floorplan, grade levels and culture within their building.</p> <p>Maximum occupancy signs have been posted at all classrooms and based upon measurements provided by the district.</p>

## 2g. PLAYGROUNDS, FIELDS, RECESS, BREAKS, AND RESTROOMS

OHA/ODE Requirements	Hybrid/Onsite Plan
<ul style="list-style-type: none"> <li><input type="checkbox"/> Keep school playgrounds closed to the general public until park playground equipment and benches reopen in the community (see Oregon Health Authority's <a href="#">Specific Guidance for Outdoor Recreation Organizations</a>).</li> <li><input type="checkbox"/> After using the restroom students must wash hands with soap and water for 20 seconds. Soap must be made available to students and staff.</li> <li><input type="checkbox"/> Before and after using playground equipment, students must wash hands with soap and water for 20 seconds <u>or</u> use an alcohol-based hand sanitizer with 60-95% alcohol.</li> <li><input type="checkbox"/> Designate playground and shared equipment solely for the use of one cohort at a time. Outdoor playground structures require normal routine cleaning and do not require disinfection. Shared equipment (balls, jump ropes, etc.) should be cleaned and disinfected at least daily in accordance with <a href="#">CDC guidance</a>.</li> <li><input type="checkbox"/> Cleaning requirements must be maintained (see section 2j of the <i>Ready Schools, Safe Learners</i> guidance).</li> <li><input type="checkbox"/> Maintain physical distancing requirements, stable cohorts, and square footage requirements.</li> <li><input type="checkbox"/> Provide signage and restrict access to outdoor equipment (including sports equipment, etc.).</li> <li><input type="checkbox"/> Design recess activities that allow for physical distancing and maintenance of stable cohorts.</li> <li><input type="checkbox"/> Clean all outdoor equipment at least daily or between use as much as possible in accordance with <a href="#">CDC guidance</a>.</li> <li><input type="checkbox"/> Limit staff rooms, common staff lunch areas, elevators and workspaces to single person usage at a time, maintaining six feet of distance between adults.</li> </ul>	<p>Each school's safety team is completing a COVID-19 checklist to ensure compliance with all 1-3 domains and based upon the unique floorplan, grade levels and culture within their building.</p>

## 2h. MEAL SERVICE/NUTRITION

OHA/ODE Requirements	Hybrid/Onsite Plan
<ul style="list-style-type: none"> <li><input type="checkbox"/> Include meal services/nutrition staff in planning for school reentry.</li> <li><input type="checkbox"/> Prohibit self-service buffet-style meals.</li> <li><input type="checkbox"/> Prohibit sharing of food and drinks among students and/or staff.</li> <li><input type="checkbox"/> At designated meal or snack times, students may remove their face coverings to eat or drink but must maintain six feet of physical</li> </ul>	<p>Each school's safety team is completing a COVID-19 checklist to ensure compliance with all 1-3 domains and based upon the unique floorplan, grade levels and culture within their building.</p>

OHA/ODE Requirements	Hybrid/Onsite Plan
<p>distance from others, and must put face coverings back on after finishing the meal or snack.</p> <ul style="list-style-type: none"> <li><input type="checkbox"/> Staff serving meals and students interacting with staff at mealtimes must wear face coverings (see section 1h of the <b><i>Ready Schools, Safe Learners</i></b> guidance).</li> <li><input type="checkbox"/> Students must wash hands with soap and water for 20 seconds <u>or</u> use an alcohol-based hand sanitizer with 60-95% alcohol before meals and shall be encouraged to do so after.</li> <li><input type="checkbox"/> Appropriate daily cleaning of meal items (e.g., plates, utensils, transport items).</li> <li><input type="checkbox"/> Cleaning and sanitizing of meal touch-points and meal counting system between stable cohorts.</li> <li><input type="checkbox"/> Adequate cleaning and disinfection of tables between meal periods.</li> <li><input type="checkbox"/> Since staff must remove their face coverings during eating and drinking, staff must eat snacks and meals independently, and not in staff rooms when other people are present. Consider staggering times for staff breaks, to prevent congregation in shared spaces.</li> </ul>	<p>Nutritional services met with each building principal to discuss meal planning at their site.</p>

## 2i. TRANSPORTATION

OHA/ODE Requirements	Hybrid/Onsite Plan
<ul style="list-style-type: none"> <li><input type="checkbox"/> Include transportation departments (and associated contracted providers, if used) in planning for return to service.</li> <li><input type="checkbox"/> Buses are cleaned frequently. Conduct targeted cleanings between routes, with a focus on disinfecting frequently touched surfaces of the bus (see section 2j of the <b><i>Ready Schools, Safe Learners</i></b> guidance).</li> <li><input type="checkbox"/> Staff must use hand sanitizer (containing between 60-95% alcohol) in between helping each child and when getting on and off the vehicle. Gloves are not recommended; hand sanitizer is strongly preferred. If hand sanitizer is not available, disposable gloves can be used and must be changed to a new pair before helping each child.</li> <li><input type="checkbox"/> Develop protocol for loading/unloading that includes visual screening for students exhibiting symptoms and logs for contact-tracing. This must be done at the time of arrival and departure. <ul style="list-style-type: none"> <li>• If a student displays COVID-19 symptoms, provide a face covering (unless they are already wearing one) and keep six feet away from others. Continue transporting the student. <ul style="list-style-type: none"> <li>○ The symptomatic student shall be seated in the first row of the bus during transportation, and multiple windows must be opened to allow for fresh air circulation, if feasible.</li> <li>○ The symptomatic student shall leave the bus first. After all students exit the bus, the seat and surrounding surfaces must be cleaned and disinfected.</li> </ul> </li> <li>• If arriving at school, notify staff to begin isolation measures. <ul style="list-style-type: none"> <li>○ If transporting for dismissal and the student displays an onset of symptoms, notify the school.</li> </ul> </li> </ul> </li> <li><input type="checkbox"/> Consult with parents/guardians of students who may require additional support (e.g., students who experience a disability and require specialized transportation as a related service) to appropriately provide service.</li> <li><input type="checkbox"/> Drivers must wear masks or face coverings while driving, unless the mask or face covering interferes with the driver's vision (e.g., fogging of eyeglasses). Drivers must wear face coverings when not actively driving and operating the bus, including while students are entering or exiting the vehicle. A face shield may be an acceptable alternative, as stated in Section 1h of the <b><i>Ready Schools, Safe Learners</i></b> guidance.</li> </ul>	<p>Our operations director worked directly with our transportation supervisor to ensure compliance with these requirements.</p>



OHA/ODE Requirements	Hybrid/Onsite Plan
<input type="checkbox"/> Inform parents/guardians of practical changes to transportation service (i.e., physical distancing at bus stops and while loading/unloading, potential for increased route time due to additional precautions, sanitizing practices, and face coverings). <input type="checkbox"/> Face coverings or face shields for all students in grades Kindergarten and up following <a href="#">CDC guidelines</a> applying the guidance in section 1h of the <b>Ready Schools, Safe Learners</b> guidance to transportation settings.	

## 2j. CLEANING, DISINFECTION, AND VENTILATION

OHA/ODE Requirements	Hybrid/Onsite Plan
<input type="checkbox"/> Clean, sanitize, and disinfect frequently touched surfaces (e.g. door handles, sink handles, drinking fountains, transport vehicles) and shared objects (e.g., toys, games, art supplies) between uses multiple times per day. Maintain clean and disinfected ( <a href="#">CDC guidance</a> ) environments, including classrooms, cafeteria settings and restrooms. <input type="checkbox"/> Outdoor playground structures require normal routine cleaning and do not require disinfection. Shared equipment should be cleaned and disinfected at least daily in accordance with <a href="#">CDC guidance</a> . Apply disinfectants safely and correctly following labeling direction as specified by the manufacturer. Keep these products away from students. <input type="checkbox"/> To reduce the risk of asthma, choose disinfectant products on the EPA List N with asthma-safer ingredients (e.g. hydrogen peroxide, citric acid, or lactic acid) and avoid products that mix these with asthma-causing ingredients like peroxyacetic acid, sodium hypochlorite (bleach), or quaternary ammonium compounds. <input type="checkbox"/> Schools with HVAC systems must evaluate the system to minimize indoor air recirculation (thus maximizing fresh outdoor air) to the extent possible. Schools that do not have mechanical ventilation systems shall, to the extent possible, increase natural ventilation by opening windows and interior doors before students arrive and after students leave, and while students are present. Do not prop open doors that can pose a safety or security risk to students and staff (e.g., exterior doors and fire doors that must remain closed). <input type="checkbox"/> Consider running ventilation systems continuously and changing the filters more frequently. Do <u>not</u> use fans if they pose a safety or health risk, such as increasing exposure to pollen/allergies or exacerbating asthma symptoms. Consider using window fans or box fans positioned in open windows to blow fresh outdoor air into the classroom via one window, and indoor air out of the classroom via another window. Fans must not be used in rooms with closed windows and doors, as this does not allow for fresh air to circulate. <input type="checkbox"/> Consider the need for increased ventilation in areas where students with special health care needs receive medication or treatments. <input type="checkbox"/> Facilities must be cleaned and disinfected at least daily to prevent transmission of the virus from surfaces (see <a href="#">CDC's guidance on disinfecting public spaces</a> ). <input type="checkbox"/> Consider modification or enhancement of building ventilation where feasible (see <a href="#">CDC's guidance on ventilation and filtration</a> and <a href="#">American Society of Heating, Refrigerating, and Air-Conditioning Engineers' guidance</a> ). <input type="checkbox"/> Clean, sanitize, and disinfect frequently touched surfaces (e.g. door handles, sink handles, drinking fountains, transport vehicles) and shared objects (e.g., toys, games, art supplies) between uses multiple times per day. Maintain clean and disinfected ( <a href="#">CDC         </a>	<p><b>Cleaning</b></p> <p>In addition to the development of our district cleaning protocols (available in our staff portal for viewing), our district's custodial supervisor met with each building's principal and head engineer to review our district cleaning policy's implementation.</p> <p><b>Ventilation</b></p> <p>The air handling systems in our schools are fully automated (bring in outside air, exhaust air, control temperature for heating and cooling, turn on and off with a pre-programmed schedule, has intelligent software with the ability to optimize start times to ensure buildings are at setpoint when staff/students arrive and maximize energy savings) through the Building Management System.</p> <p>Air handling systems continuously bring outside air into the building as needed throughout the day. Air changes 1 to 2 times per hour and is filtered 6-7 times per hour. Most systems have CO2 sensors and will bring in additional outside air as needed. Our goal is to install merv 13 filters before hybrid learning starts.</p> <p>In addition to this we are going to operate our systems 1 hour prior to the start of school and 1 hour after school is out.</p>

OHA/ODE Requirements	Hybrid/Onsite Plan
<a href="#">guidance</a> ) environments, including classrooms, cafeteria settings and restrooms.	

## 2k. HEALTH SERVICES

OHA/ODE Requirements	Hybrid/Onsite Plan
<input type="checkbox"/> OAR 581-022-2220 Health Services, requires districts to “maintain a prevention-oriented health services program for all students” including space to isolate sick students and services for students with special health care needs. While OAR 581-022-2220 does not apply to private schools, private schools must provide a space to isolate sick students and provide services for students with special health care needs. <input type="checkbox"/> Licensed, experienced health staff should be included on teams to determine district health service priorities. Collaborate with health professionals such as school nurses; SBHC staff; mental and behavioral health providers; dental providers; physical, occupational, speech, and respiratory therapists; and School Based Health Centers (SBHC).	Each school’s safety team is completing a COVID-19 checklist to ensure compliance with all 1-3 domains and based upon the unique floorplan, grade levels and culture within their building.

## 2l. BOARDING SCHOOLS AND RESIDENTIAL PROGRAMS ONLY

OHA/ODE Requirements	Hybrid/Onsite Plan
<input type="checkbox"/> Provide specific plan details and adjustments in Operational Blueprints that address staff and student safety, which includes how you will approach: <ul style="list-style-type: none"> <li>• Contact tracing</li> <li>• The intersection of cohort designs in residential settings (by wing or common restrooms) with cohort designs in the instructional settings. The same cohorting parameter limiting total cohort size to 100 people applies.</li> <li>• Quarantine of exposed staff or students</li> <li>• Isolation of infected staff or students</li> <li>• Communication and designation of where the “household” or “family unit” applies to your residents and staff</li> </ul> <input type="checkbox"/> Review and take into consideration <a href="#">CDC guidance</a> for shared or congregate housing: <ul style="list-style-type: none"> <li>• Not allow more than two students to share a residential dorm room unless alternative housing arrangements are impossible</li> <li>• Ensure at least 64 square feet of room space per resident</li> <li>• Reduce overall residential density to ensure sufficient space for the isolation of sick or potentially infected individuals, as necessary;</li> <li>• Configure common spaces to maximize physical distancing;</li> <li>• Provide enhanced cleaning;</li> <li>• Establish plans for the containment and isolation of on-campus cases, including consideration of PPE, food delivery, and bathroom needs.</li> </ul>	
<b>Exception</b>	
<input type="checkbox"/> They have a current and complete RSSL Blueprint and are complying with Sections 1-3 of the <b>Ready Schools, Safe Learners</b> guidance and any other applicable sections, including Section 2L of the <b>Ready Schools, Safe Learners</b> guidance. <input type="checkbox"/> The school maintains a fully-closed residential campus (no non-essential visitors allowed), and normal day school operations are only offered remotely through distance learning. <input type="checkbox"/> There have been no confirmed cases of COVID-19 among school staff or students in the past 14 days. <input type="checkbox"/> Less than 10% of staff, employees, or contractors (in total) are traveling to or from campus. Staff in this designation will: <ul style="list-style-type: none"> <li>• Limit travel to essential functions.</li> </ul>	

OHA/ODE Requirements	Hybrid/Onsite Plan
<ul style="list-style-type: none"> <li>Carefully monitor their own health daily and avoid coming to campus at any potential symptom of COVID-19.</li> </ul> <input type="checkbox"/> Any boarding students newly arriving to campus will either: <ul style="list-style-type: none"> <li>Complete a quarantine at home for 14 days (or current CDC recommended time period) prior to traveling to the school, OR</li> <li>Quarantine on campus for 14 days (or current CDC recommended time period).</li> </ul> <input type="checkbox"/> Student transportation off-campus is limited to medical care.	

## 2m. SCHOOL EMERGENCY PROCEDURES AND DRILLS

OHA/ODE Requirements	Hybrid/Onsite Plan
<input type="checkbox"/> In accordance with <a href="#">ORS 336.071</a> and <a href="#">OAR 581-022-2225</a> all schools (including those operating a Comprehensive Distance Learning model) are required to instruct students on emergency procedures. Schools that operate an On-Site or Hybrid model need to instruct and practice drills on emergency procedures so that students and staff can respond to emergencies. <ul style="list-style-type: none"> <li>At least 30 minutes in each school month must be used to instruct students on the emergency procedures for fires, earthquakes (including tsunami drills in appropriate zones), and safety threats.</li> <li>Fire drills must be conducted monthly.</li> <li>Earthquake drills (including tsunami drills and instruction for schools in a tsunami hazard zone) must be conducted two times a year.</li> <li>Safety threats including procedures related to lockdown, lockout, shelter in place and evacuation and other appropriate actions to take when there is a threat to safety must be conducted two times a year.</li> </ul> <input type="checkbox"/> Drills can and should be carried out <u>as close as possible</u> to the procedures that would be used in an actual emergency. For example, a fire drill must be carried out with the same alerts and same routes as normal. If appropriate and practicable, COVID-19 physical distancing measures can be implemented, but only if they do not compromise the drill. <input type="checkbox"/> When or if physical distancing must be compromised, drills must be completed in less than 15 minutes. <input type="checkbox"/> Drills shall not be practiced unless they can be practiced correctly. <input type="checkbox"/> Train staff on safety drills prior to students arriving on the first day on campus in hybrid or face-to-face engagement. <input type="checkbox"/> If on a hybrid schedule, conduct multiple drills each month to ensure that all cohorts of students have opportunities to participate in drills (i.e., schedule on different cohort days throughout the year). <input type="checkbox"/> Students must wash hands with soap and water for 20 seconds or use an alcohol-based hand sanitizer with 60-95% alcohol after a drill is complete.	<p>Each school's safety team is completing a COVID-19 checklist to ensure compliance with all 1-3 domains and based upon the unique floorplan, grade levels and culture within their building.</p>

## 2n. SUPPORTING STUDENTS WHO ARE DYSREGULATED, ESCALATED, AND/OR EXHIBITING SELF-REGULATORY CHALLENGES

OHA/ODE Requirements	Hybrid/Onsite Plan
<input type="checkbox"/> Utilize the components of Collaborative Problem Solving or a similar framework to continually provide instruction and skill-building/training related to the student's demonstrated lagging skills. <input type="checkbox"/> Take proactive/preventative steps to reduce antecedent events and triggers within the school environment. <input type="checkbox"/> Be proactive in planning for known behavioral escalations (e.g., self-harm, spitting, scratching, biting, eloping, failure to maintain physical distance). Adjust antecedents where possible to minimize	<p>We have PBIS integrated within our schools, we train staff on Collaborative Problem Solving (CPS) and in trauma informed practices through our Culture of Care work and with our behavioral coaches.</p> <p>We have both school and district Social-Emotional Learning teams and partnered with <a href="#">BRYT</a> to enhance our schoolwide SEL supports and interventions during the upcoming year.</p>

OHA/ODE Requirements	Hybrid/Onsite Plan
<p>student and staff dysregulation. Recognize that there could be new and different antecedents and setting events with the additional requirements and expectations for the 2020-21 school year.</p> <ul style="list-style-type: none"> <li><input type="checkbox"/> Establish a proactive plan for daily routines designed to build self-regulation skills; self-regulation skill-building sessions can be short (5-10 minutes), and should take place at times when the student is regulated and/or is not demonstrating challenging behaviors.</li> <li><input type="checkbox"/> Ensure all staff are trained to support de-escalation, provide lagging skill instruction, and implement alternatives to restraint and seclusion.</li> <li><input type="checkbox"/> Ensure that staff are trained in effective, evidence-based methods for developing and maintaining their own level of self-regulation and resilience to enable them to remain calm and able to support struggling students as well as colleagues.</li> <li><input type="checkbox"/> Plan for the impact of behavior mitigation strategies on public health and safety requirements:             <ul style="list-style-type: none"> <li>• Student elopes from area                 <ul style="list-style-type: none"> <li>○ If staff need to intervene for student safety, staff should:                     <ul style="list-style-type: none"> <li>● Use empathetic and calming verbal interactions (i.e. “This seems hard right now. Help me understand... How can I help?”) to attempt to re-regulate the student without physical intervention.</li> <li>● Use the least restrictive interventions possible to maintain physical safety for the student and staff.</li> <li>● Wash hands after a close interaction.</li> <li>● Note the interaction on the appropriate contact log.</li> </ul> </li> <li>○ *If unexpected interaction with other stable cohorts occurs, those contacts must be noted in the appropriate contact logs.</li> </ul> </li> <li>• Student engages in behavior that requires them to be isolated from peers and results in a room clear.                 <ul style="list-style-type: none"> <li>○ If students leave the classroom:                     <ul style="list-style-type: none"> <li>● Preplan for a clean and safe alternative space that maintains physical safety for the student and staff</li> <li>● Ensure physical distancing and separation occur, to the maximum extent possible.</li> <li>● Use the least restrictive interventions possible to maintain physical safety for the student and staff.</li> <li>● Wash hands after a close interaction.</li> <li>● Note the interaction on the appropriate contact log.</li> </ul> </li> <li>○ *If unexpected interaction with other stable cohorts occurs, those contacts must be noted in the appropriate contact logs.</li> </ul> </li> <li>• Student engages in physically aggressive behaviors that preclude the possibility of maintaining physical distance and/or require physical de-escalation or intervention techniques other than restraint or seclusion (e.g., hitting, biting, spitting, kicking, self-injurious behavior).                 <ul style="list-style-type: none"> <li>○ If staff need to intervene for student safety, staff should:                     <ul style="list-style-type: none"> <li>● Maintain student dignity throughout and following the incident.</li> <li>● Use empathetic and calming verbal interactions (i.e. “This seems hard right now. Help me understand... How can I help?”) to attempt to re-regulate the student without physical intervention.</li> <li>● Use the least restrictive interventions possible to maintain physical safety for the student and staff</li> <li>● Wash hands after a close interaction.</li> <li>● Note the interaction on the appropriate contact log.</li> </ul> </li> </ul> </li> </ul> </li> </ul> <p>*If unexpected interaction with other stable cohorts occurs, those contacts must be noted in the appropriate contact logs.</p>	

OHA/ODE Requirements	Hybrid/Onsite Plan
<input type="checkbox"/> Ensure that spaces that are unexpectedly used to deescalate behaviors are appropriately cleaned and sanitized after use before the introduction of other stable cohorts to that space.	

## 2o. PROTECTIVE PHYSICAL INTERVENTION

OHA/ODE Requirements	Hybrid/Onsite Plan
<input type="checkbox"/> Reusable Personal Protective Equipment (PPE) must be cleaned and disinfected following the manufacturer's recommendation, after every episode of physical intervention (see section 2j. Cleaning, Disinfection, and Ventilation in the <b>Ready Schools, Safe Learners</b> guidance). Single-use disposable PPE must not be re-used.	



## 3. Response to Outbreak

### 3a. PREVENTION AND PLANNING

OHA/ODE Requirements	Hybrid/Onsite Plan
<input type="checkbox"/> Review the " <a href="#">Planning for COVID-19 Scenarios in Schools</a> " toolkit. <input type="checkbox"/> Coordinate with Local Public Health Authority (LPHA) to establish communication channels related to current transmission level.	The <b>BLS Operational Blueprint Management Plan for COVID</b> and supporting documents (like the Communicable Disease Plan, our District Cleaning Protocols and the Exclusion & Quarantine Flow Chart) can be accessed on our <a href="#">Return To School webpage</a>

### 3b. RESPONSE

OHA/ODE Requirements	Hybrid/Onsite Plan
<input type="checkbox"/> Review and utilize the " <a href="#">Planning for COVID-19 Scenarios in Schools</a> " toolkit. <input type="checkbox"/> Ensure continuous services and implement Comprehensive Distance Learning. <input type="checkbox"/> Continue to provide meals for students.	The <b>BLS Operational Blueprint Management Plan for COVID</b> and supporting documents (like the Communicable Disease Plan, our District Cleaning Protocols and the Exclusion & Quarantine Flow Chart) can be accessed on our <a href="#">Return To School webpage</a>

### 3c. RECOVERY AND REENTRY

OHA/ODE Requirements	Hybrid/Onsite Plan
<input type="checkbox"/> Review and utilize the " <a href="#">Planning for COVID-19 Scenarios in Schools</a> " toolkit. <input type="checkbox"/> Clean, sanitize, and disinfect surfaces (e.g. door handles, sink handles, drinking fountains, transport vehicles) and follow <a href="#">CDC guidance</a> for classrooms, cafeteria settings, restrooms, and playgrounds. <input type="checkbox"/> When bringing students back into On-Site or Hybrid instruction, consider smaller groups, cohorts, and rotating schedules to allow for a safe return to schools.	The <b>BLS Operational Blueprint Management Plan for COVID</b> and supporting documents (like the Communicable Disease Plan, our District Cleaning Protocols and the Exclusion & Quarantine Flow Chart) can be accessed on our <a href="#">Return To School webpage</a>



## ASSURANCES

*This section must be completed by any public school that is providing instruction through On-Site or Hybrid Instructional Models. Schools providing Comprehensive Distance Learning Instructional Models do not need to complete this section unless the school is implementing the Limited In-Person Instruction provision under the Comprehensive Distance Learning guidance. This section does not apply to private schools.*

- ☒ We affirm that, in addition to meeting the requirements as outlined above, our school plan has met the collective requirements from ODE/OHA guidance related to the 2020-21 school year, including but not limited to requirements from:
- Sections 4, 5, 6, 7, and 8 of the [Ready Schools, Safe Learners](#) guidance,
  - The [Comprehensive Distance Learning](#) guidance,
  - The [Ensuring Equity and Access: Aligning Federal and State Requirements](#) guidance, and
  - [Planning for COVID-19 Scenarios in Schools](#)
- ☐ We affirm that we cannot meet all of the collective requirements from ODE/OHA guidance related to the 2020-21 school year from:
- Sections 4, 5, 6, 7, and 8 of the [Ready Schools, Safe Learners](#) guidance,
  - The [Comprehensive Distance Learning](#) guidance,
  - The [Ensuring Equity and Access: Aligning Federal and State Requirements](#) guidance, and
  - [Planning for COVID-19 Scenarios in Schools](#)

We will continue to work towards meeting them and have noted and addressed which requirement(s) we are unable to meet in the table titled “Assurance Compliance and Timeline” below.



#### 4. Equity



#### 5. Instruction



#### 6. Family, Community, Engagement



#### 7. Mental, Social, and Emotional Health



#### 8. Staffing and Personnel

### Assurance Compliance and Timeline

If a district/school cannot meet the requirements from the sections above, provide a plan and timeline to meet the requirement.

List Requirement(s) Not Met	Provide a Plan and Timeline to Meet Requirements Include how/why the school is currently unable to meet them