

PROPOSED PROJECTS

2017-2021 MAP

Bend-La Pine Schools' Sites and Facilities teams are recommending a bond levy that would finance 159 much needed projects that would protect our community's investment in its schools and facilities. These projects would support economic growth, prosperity and go far to protect our quality of life now and for future generations.

These projects would extend the life of existing buildings, many of which are more than 30 years old, and provide funds for safety improvements, modernization and expansion of existing buildings.

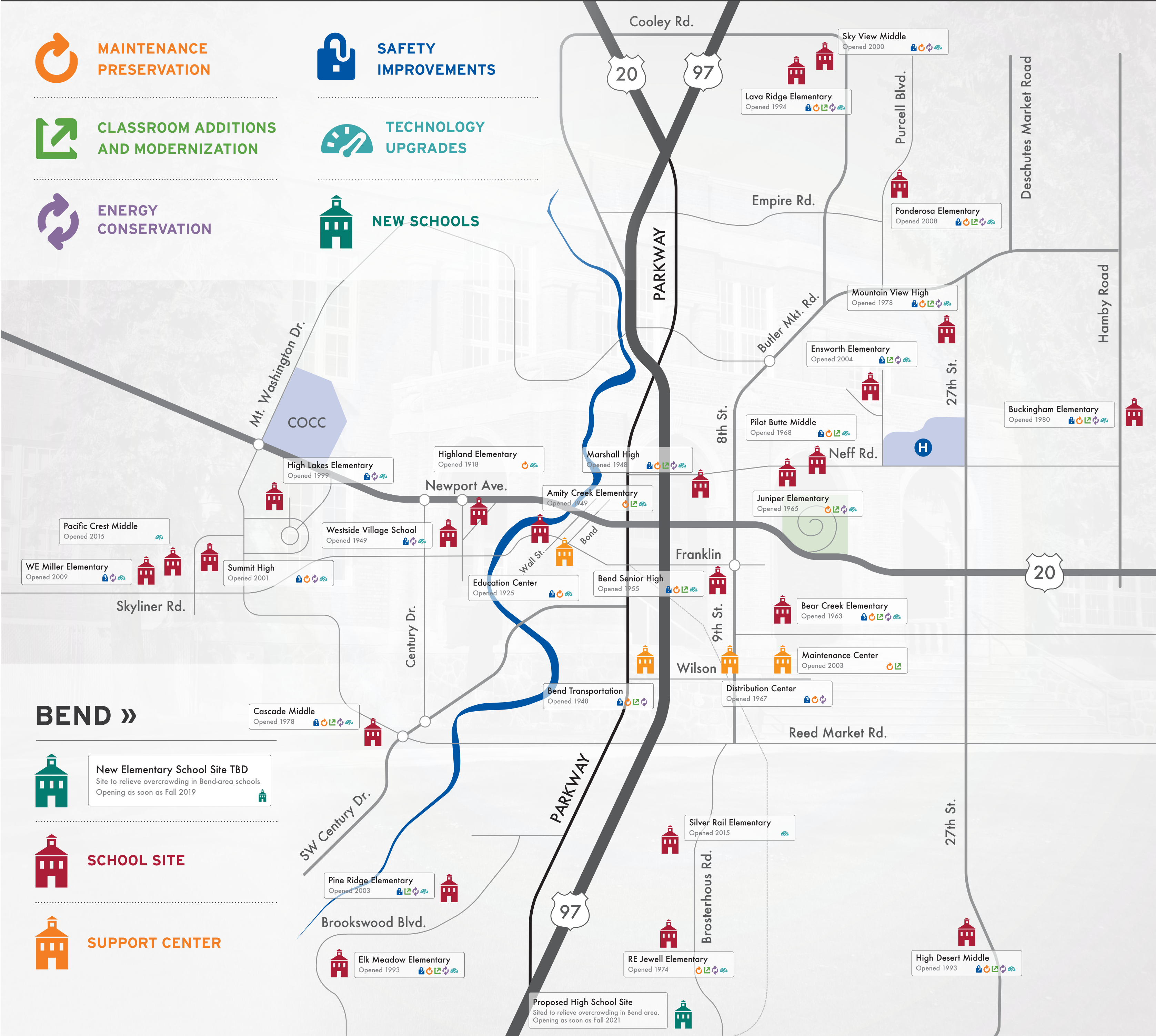
Est. 1883

B E N D L A P I N E

S c h o o l s

EDUCATING THRIVING CITIZENS

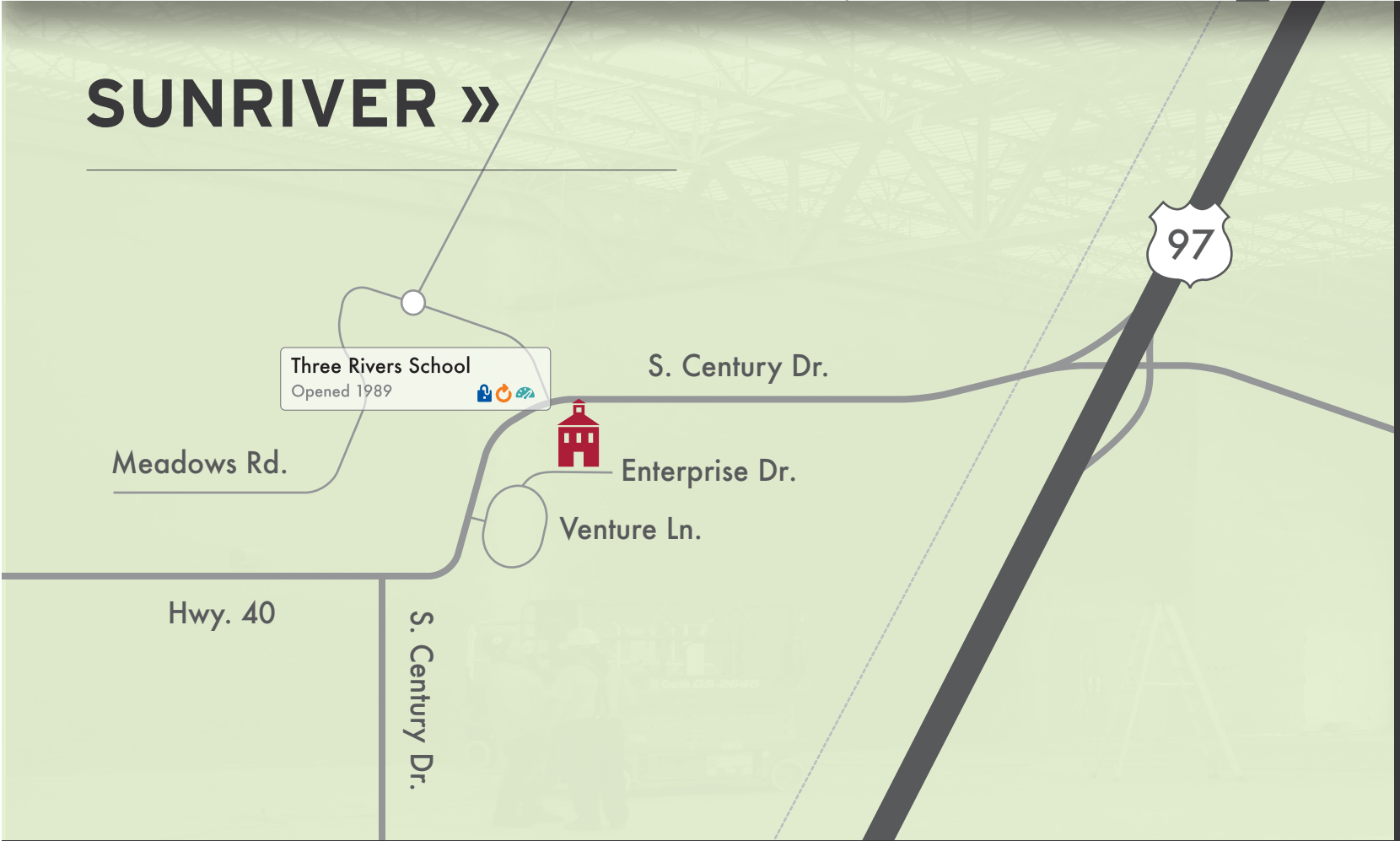
- MAINTENANCE PRESERVATION
- CLASSROOM ADDITIONS AND MODERNIZATION
- ENERGY CONSERVATION
- SAFETY IMPROVEMENTS
- TECHNOLOGY UPGRADES
- NEW SCHOOLS



BEND »

- New Elementary School Site TBD
Site to relieve overcrowding in Bend-area schools
Opening as soon as Fall 2019
- SCHOOL SITE
- SUPPORT CENTER

SUNRIVER »



LA PINE »

