

NOW OPEN!

Ensworth Community School-Based Health Center

Open to all children
ages birth to 18

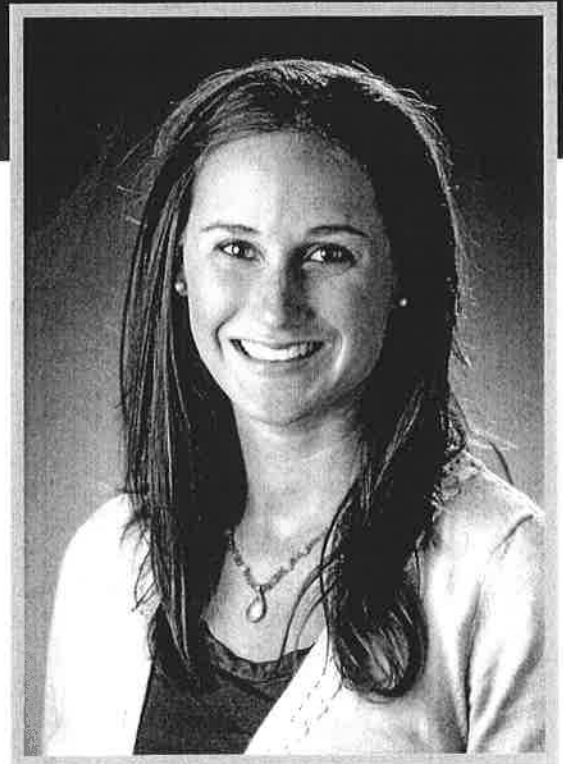
Hours:

Monday - Friday, 8-5pm

Located at:

Ensworth Elementary School
2150 NE Daggett Lane, Bend
(Across from the Deschutes Children's Foundation)

541-323-3850



Meet Ellie Millan,
our Pediatric Nurse
Practitioner.

Ellie loves all aspects of Pediatrics, from well child checks, to behavioral health and sports medicine. Most importantly she loves the fun, smiles and laughter kids bring to her every day.



MosaicMedical
Quality Care For All

In partnership with:

