

**Bend-La Pine Schools
Bend, OR 97701
October 14, 2014**

Regular Meeting 6:00p

The Board of Directors of Bend-La Pine Schools will meet in regular meeting on October 14, 2014 at 6:00p
in the library at La Pine High School, 51633 Coach Road, La Pine, OR 97739.

Agenda

6:00	Call to Order	Co-Chair Helt
6:01	Pledge of Allegiance	Ron Gallinat
6:02	Review of Agenda	Co-Chair Helt
6:05	Public Input <i>This is the time provided for individuals to address the Board. Visitors who wish to speak must sign up prior to the beginning of the meeting on the sign-up sheet provided. Please state your name and topic at the time you address the Board.</i>	Co-Chair Helt
6:10	Superintendent's Report	Superintendent Wilkinson

Consent Agenda

6:15	a. Approval of Minutes – September 23, 2014 Reference: ORS 192.650 and ORS 332.057	Co-Chair Helt
	b. Approval of Personnel Recommendations Reference: ORS 332.505	Jay Mathisen

Action

6:17	a. Appoint Zone 4 Board Member	Co-Chair Helt
6:25	b. Teacher Evaluation	Jay Mathisen & Jim Boen
6:30	c. Achievement Compact	Superintendent Wilkinson

Reports

6:40	a. South County Update – AVID Program	Jim Boen
6:50	b. Financial Update	Brad Henry
6:55	c. Choice Options	Lora Nordquist

Discussion

7:25	a. Possible Effects of Measure 91 for Bend-La Pine Schools	Superintendent Wilkinson
7:40	b. Surplus Property	Brad Henry

Board Comments

Adjourn

**Bend-La Pine Schools
Bend, OR 97701**

The Board of Directors for Bend-La Pine Schools met in a regular meeting on September 23, 2014 in room 314 of the Education Center, at 520 NW Wall Street, Bend, OR 97701.

Board Members Present:

Nori Juba
Cheri Helt
Peggy Kinkade
Ron Gallinat
Andy High
Julie Craig

Call to Order

The meeting was called to order at 4:36p by Co-Chair Helt. The Zone 4 Board Candidate Interview process was explained.

Zone 4 Board Candidate Interviews

John Arriagada, Jeffrey James, W. Edward Myers, Dr. Michael Way & Dr. Stuart Young

The Board interviewed five candidates for the vacant Zone 4 Board position. The candidates were asked a series of questions by Board members. At the conclusion of the interviews, the Board discussed the candidates and next steps of the appointment process. The Board concluded they would do some follow up with each candidate and at the October 14, 2014 meeting they would take action on their appointment.

Co-Chair Helt recessed the meeting at 6:15p.

Meeting resumed and regular session was called to order at 6:20p. The Pledge of Allegiance followed.

Review of Agenda

Co-Chair Helt noted the updated agenda.

Public Input

Carol Higgins addressed the Board regarding handwriting. She thanked the Board for their time and noted she was a teacher in the Education Center years ago before moving to Africa and starting an elementary and secondary school along with a medical center and developing clean water systems. She noted upon her return to the United States she is extremely concerned about the lack of handwriting, cursive in particular, in the core curriculum. Handwriting is foundational and Higgins shared an article from Readers Digest that suggests the unique connection between the brain and hand and how it affects memory. She feels handwriting is essential and needs to be a priority in our schools. Higgins handed out a letter summarizing the concern for the Board to review. Co-Chair Helt thanked Higgins for her time.

Superintendent's Report

Superintendent Wilkinson congratulated Janet McLain, a first grade teacher at Three Rivers K-8, as she was recently named an Oregon finalist for the Presidential Award for Excellence in Science and Mathematics Teaching. Wilkinson reviewed how the finalist selection process works and the timeline of when the awards are determined. He also extended his congratulations to five National Merit Semi-Finalists; from Bend High: Maxwell Farrens, Ella Feldmann and Ernest Finney-Jordet, and from Summit High: Jules Ginsparg and Matthew Sjogren.

Wilkinson said student safety is a District priority and shared he taught how to safely ride and evacuate a school bus each year. He appreciates all of the drivers in the District, acknowledging it's not the easiest

job and they do incredible work everyday. Wilkinson reminded all to register and vote in the upcoming election.

Consent Agenda

Ron Gallinat moved to approve the Consent Agenda. Julie Craig seconded the motion. Unanimous approval.

Reports

Enrollment Update

Brad Henry noted the most recent numbers on the hand out at each Board member's seat. Since the last report on September 9, the District has grown by 62 students, which is typical for this time of year. Currently the student count is at 17,180.

Peggy Kinkade asked if the District has made all of the FTE adjustments needed to keep up with the growth. Superintendent Wilkinson said 7.3 FTE have been added and there are still some nursing staffing needs the District continues to work on. All of the additional elementary FTE have been hired and at the secondary level, there are some counseling services still being processed.

Bend-La Pine Online Update

Skip Offenhauser and Tres Tyvand reviewed the Bend-La Pine Online (BLPO) program, current staff members serving the program, and how it has changes since it's inception in 2004 as a charter option for the District.

Ron Gallinat asked how each of the BLPO staff members serve the program. Offenhauser explained the newest addition is half-time K-5 teacher, Tanya Everts, who has been hired to serve the elementary population. As the K-5 enrollment continues to grow, Everts' FTE could increase to help serve increasing enrollment. The other five staff members for BLPO are full time. Tyvand explained Michelle Oliver serves secondary students who are online only, and not in a building for classes. She offers both counseling and teaching support to these students. Christie McCormick serves all five high schools and the students who are enrolled in school and taking supplemental online courses.

Offenhauser reviewed current online course offerings and shared how student enrollment breaks down in the program. Co-Chair Helt commented she recently attended the BLPO open house and learned incredible things about the program. Offenhauser noted the elementary students enrolled rely heavily on a 'coach', which are often times a parent who supplements the online curriculum with materials provided by the program. Everts works in close connection with elementary parents to help provide them support and understanding of their role in the student's learning. He noted there is also a Pre-K program available for a \$240 fee.

Currently 1,350 students are enrolled in supplementary online courses. Helt asked who monitors student progress, etc. Tyvand answered McCormick is largely involved with these students along with other classroom teachers around the district. Kinkade asked about the staffing for BLPO and how they deliver assistance, office hours, etc. Offenhauser explained there are a few different approaches to support. Everts offers both daytime and evening office hours to help accommodate schedules and is currently working to develop professional development for coaches of elementary students, which she plans to deliver in a workshop style format. He noted having a contact for the elementary students has been an incredible asset for not only the program, but also the families. Tyvand noted other BLPO staff members are on site and in the schools to offer student and staff support. They also offer office hours for full-time online secondary students.

Offenhauser shared there are approximately 350 students enrolled who are using online tools to support their classroom learning, what the program calls Blended Classrooms. Tyvand reviewed how Blackboard, the District's current vendor, allows teachers to have an account where they can use pre-developed online

courses or create their own online courses. In August nearly 50 teachers took advantage of training to learn how to access and build coursework to help vary their classroom teaching. Tyvand anticipates more training to occur throughout the year for teachers grades 6-12. Wilkinson noted the expanded efforts and conversations a few years ago were a vision of blended classrooms and this is a significant step in expanding the vision and developing professional development opportunities. Offenhauser noted a 91% pass rate for high school students in blended classrooms and feels the face-to-face support plays a huge factor to student success.

Wilkinson commented on the focus a few years ago to meet the needs and interests of families and students whom were asking for more options. Through Tyvand's leadership with Offenhauser and Mikalson the District has worked tremendously hard in finding ways to grow this program. Co-Chair Juba complimented the great work and feels the support we are offering students with the BLPO staff is a great use of dollars. He asked how the cost of an online teacher compares to a brick and mortar teacher. Brad Henry said approximately 60-70 students are served by an online course versus a traditional classroom setting, but it's hard to get a really good count as an online schedule is much more flexible and the workload is very different for teachers serving these students. At this time, Wilkinson said, it is cost neutral and the District continues to monitor the balance of keeping it so. By having options online, it frees up some of our classrooms to be able to offer courses that would otherwise not be available.

Juba asked where students are finding the most success in using online courses. Offenhauser answered students who might have medical needs that keep them from the physical classroom, or a student who is driven to earn additional credits are examples of who takes advantage of the blended options. Wilkinson added many students use the online courses for credit recovery or take courses that cannot work into their schedule during the regular school day.

Helt asked about the success rates of various types of students in the program and if there is any history available yet on graduation information. Offenhauser said it is a little early in the program to have much historical data, however there are ways for them to dig down deeper into the 91% success rate information. Mikalson noted the wide range of students accessing BLPO makes it difficult to create categories to track, and most students using the program are in blended classrooms, so the coursework is deeply integrated into schools.

Superintendent Wilkinson noted a few years ago the District was losing students to other online options, which was worrisome as there was question to the quality and support in the other programs. The support that Tyvand and her team have created and are offering now far exceeds any other program he knows of. He noted the amazing support of the BLPO staff and how the program truly serves the needs of our students and community. Lora Nordquist agreed, and added the support of our new K-5 teacher is not the norm with other online programs, and the thought of adding professional development options for the coaches is pretty incredible and speaks to the continuing success and growth of the program. Peggy Kinkade complimented the BLOP staff and program, feels it is an exciting option for students.

New Middle School Update

Chris Boyd thanked the Board for their time and noted the amazing support he has received in making the transition to Bend-La Pine Schools and move to Bend overall. Each month he plans to provide a Board update on the new middle school.

Boyd reviewed the construction progress, noting this is a unique project sitting between two current school sites. He shared the collaboration and cooperative effort of Miller Elementary, Summit High School and other stakeholder have helped make this a manageable process. In the next few weeks, the new roads around the schools will be opening which will make a dramatic difference in the traffic impacts. Additionally, there is a strategic safety plan in place to help lessen the impact of when the water line down Skyliner Road and connection to the school site takes place. Steve Hill and the City of Bend have been

instrumental in developing this plan. Boyd noted the Facilities Department continues to do an incredible job as well in managing timelines and ensuring the quality of projects.

Boyd reviewed the staffing update and noted currently, there are teacher leader positions posted for both the new elementary and middle schools. These teacher leaders will help build the design, identity and ultimately create the culture for the schools. The positions close on Sept. 26 and the goal is to have teacher leaders for both new schools in place by mid-October. Wilkinson noted the teacher leader positions are internal only postings as they are individuals we will need to have available throughout the building process.

Boyd added the teacher leaders will help refine the instructional framework, leadership and community for the schools. He noted the importance of staff engagement to really build a strong culture. This group will also take capacity through design into consideration and will be asked to think innovatively about how the building can meet the needs of students.

The next steps for the new middle school include the naming process, which Boyd shared the timeline and proposal. He noted picking a name is a critical part of a schools identity and he is hopeful the Board supports the outlined process and moving forward. Juba asked how the District will put together a naming committee. Wilkinson answered it is his responsibility and with Board approval, the District will begin to solicit community input, through surveys, etc. to gather name suggestions. Juba asked how many teachers will be a part of the teacher leadership team. Boyd said it would depend on how many applied, but is hopeful for five to six. He added, he has been out in buildings meeting with staff to share his plan and explain the process for opening the new middle school and has answered many questions for those interested in applying. Wilkinson noted this group is like ICCLs in buildings now, and Mikalson added these teachers would ultimately be teachers at the new school and would then be part of the leadership team within the building. Boyd shared there is quite a diverse group of individuals who have applied thus far, with a variety of content areas being covered, which he is thrilled about.

Juba said he feels this team is critical in forming an identity and naming, it should be a respectful representation of the vision, identity and goals of the school. Boyd agreed and noted the goal will be for teacher leaders to work in conjunction with community members to come up with a proposed name by mid-November.

Andy High asked about the naming process for the new elementary school. Wilkinson noted the middle school process is happening first as there are other pressing issues that stem from a name, like the mascot and colors which factor into ordering certain building supplies, etc. Nordquist said it will be in January sometime that the elementary naming will occur, however the vision work will mirror the middle school timelines.

Helt thanked Boyd for the update and the great work he is doing for the new middle school.

Action

OSBA Board of Directors – Position 3 Nominations

Co-Chair Helt explained Position 3 on the OSBA Board of Directors is up for reelection and is currently held by Doug Nelson and Nelson has expressed interest that he would like to continue in this position. Helt asked Board members for nominations.

Ron Gallinat moved for the Bend-La Pine School Board to nominate Doug Nelson for the OSBA Board of Directors Position 3. Peggy Kinkade seconded the motion.

Andy High asked for clarification in the voting process and Helt explained Nelson's name will be put on the ballot with Board action taken.

Unanimous approval.

Policy Monitoring

BD GOV A – Executive Limitations

BD GOV A.5 – Emergency Succession

Superintendent Wilkinson noted the policies in the board packet and reviewed the intent of the Board having authority for everything, except for what is delegated to the Superintendent's authority by the Board. BD GOV A is the foundation of the authority and limitations the Board agrees to give the Superintendent. BD GOV A.5 is the emergency succession planning and has been updated with the changing of some positions within the District. There were no questions.

Board Comments

Andy High thanked each of the Zone 4 applicants for their interest and time tonight. He shared he has some questions and concerns with Measure 91, the legalization of marijuana, and asked fellow Board members to allow him a few minutes to comment on this topic. No one opposed.

High asked Jay Mathisen what will happen with our employees and the policies our District currently has in place if Measure 91 passes. Mathisen answered, in initial conversations with legal counsel, there will not be any impact to policy around students or staff, as our practices will remain the same based on Federal Law.

High asked what happens if there is suspicion regarding an employee possibly under the influence and if we do random drug tests. Julie Craig asked how often the District does random drug tests. Mathisen explained the District does not perform random drug tests with the exception of the Transportation Department, as it is part of state law. High asked if there was suspicion though, could it possibly lead to a drug test. Mathisen said the key to testing really is employee conduct, behavior and pattern.

High noted his concern, not only as a Board member, but also as a community member and parent around legalization and the potential impacts it has to our community. He cited problems Washington and Colorado are running into with their recent legalization and asked Mathisen what concerns he has heard from the community. Mathisen said he has not had any direct conversations but he has indirectly heard of general concern around increased usage, not just of marijuana; and general concerns around safety. Craig asked if he knew of any available data from other states as a result in the legalization. Wilkinson said antidotal data shows an increase in marijuana usage in schools, however, the primary source being medical marijuana, which is an entirely different discussion than Measure 91 presents. Craig asked if usage is on the rise, is discipline as well? Mathisen said he would follow up, but he would guess most likely yes.

Co-Chair Helt asked the Board if there was interest in bringing this topic to the next meeting for discussion. Peggy Kinkade said she would be interested and believes it will affect students and our community and feels a public conversation is appropriate. Helt agreed. Wilkinson said he would help coordinate a discussion and work to find data on the questions presented tonight. High asked to have the discussion at the next meeting. Craig added she would like the conversation to begin as she feels it is probably inevitable marijuana will be legalized at some point. She would like to have a plan at some level of how the District is going to handle and deal with it in our schools. Helt asked Wilkinson and Mathisen to make plans for a follow up discussion at the October 14 meeting.

Ron Gallinat thanked each of the Zone 4 applicants and appreciated their time. He noted his attendance at several open houses and feels the school year is off to a great start.

Peggy Kinkade thanked Gallinat for encouraging Zone 4 applicants and was impressed with the quality of all five and is interested to learn more about each of the applicants to find who will be the best fit for the Board to represent the District and students. She noted her son is in high school and she recently attended his back to school night and was excited about the professionalism and enthusiasm of the teachers she met with. She added it was fun to see parents' reactions and be receptive to some of the innovative and new ways teachers are working together, like using online curriculum in the classroom and blending

subjects like History and Language Arts. She is eager to hear how Phase 2 of the digital conversion is going as well.

Co-Chair Juba thanked Gallinat for leading the effort in recruiting Zone 4 applicants and noted it will be a tough decision as all were very qualified candidates. He added, it is a very important decision to make as to who the Board decides will best fit with the Board's vision and plans to move the District forward. He thanked the candidates and looks forward to making an appointment at the next meeting. Juba shared his appreciation for the new middle school presentation, especially Boyd's understanding of the importance of vision and building a culture. He looks forward to the continued design process.

Co-Chair Helt thanked and noted the hard work Gallinat put into recruiting excellent Zone 4 candidates. She thanked all for a great start of the school year and has heard positive feedback from many sources. She encouraged those who are interested to apply for the boundary committee, as the application deadline will be closing soon. Helt noted the boundary process is very important for the District.

Meeting adjourned at 7:38p

Respectfully submitted,

Andrea Wilson
Confidential Superintendent & Board Assistant
9.23.2014



HUMAN RESOURCES

Education Center

*520 N.W. Wall Street
Bend, Oregon 97701-2699
(541) 355-1100
Fax: (541) 355-1109*

Educating Each Student to be a Thriving Citizen

October 10, 2014

TO: Ron Wilkinson, Superintendent
Board of Directors for Bend - La Pine Schools

FROM: Jay Mathisen, Assistant Superintendent – Human Resources & Strategic Planning

RE: Administrative and Licensed Recommended Hires, Resignations, and Retirees

The Human Resources Department recommends approval of the following hires, resignations, and retirees at the school board meeting on October 14, 2014. All hires are subject to successful drug testing.

Certified Hires

Name	Position	Location	Status	Hire Date
Folliard, Kristi	Primary Teacher @ .50 FTE #105355	High Lakes ES	Temporary	10/14/2014
Johns, Leslie	Music Teacher @ .75 FTE #105450	La Pine ES and Rosland ES	Temporary	10/14/2014
Kelling, Ryan	ERC Teacher @ .95 FTE #105439	Mtn View HS	Temporary	10/14/2014

Certified Retirements

Name	Position	Location	Hire Date End Date
Campagna, Clain	Advanced Math Teacher	Mtn View HS	08/31/1983 09/30/2014
Hackenbruck, Jeremy	Business Education Teacher	Summit HS	08/25/1995 09/30/2014
Hanna, Vicky	Primary Teacher	Juniper ES	08/29/1989 12/31/2014
Ullmann, Kimberly D	Primary Teacher	Juniper ES	08/26/1992 12/31/2014
Whitley, Gary	Counselor	Bend Sr HS	08/29/1979 09/30/2014
Zysett, Rusty	Athletic Director PE Teacher & Student Services	La Pine HS	08/26/1992 09/30/2014

Certified Retiree/Rehire 2014-15 only

Name	Position	Location	Status	Hire Date End Date
Campagna, Clain	Advanced Math Teacher	Mtn View HS	Temporary	10/01/2014 06/30/2015
Hackenbruck, Jeremy	Business Teacher	Summit HS	Temporary	10/01/2014 06/30/2015
Hanna, Vicky	Primary Teacher	Juniper ES	Temporary	01/01/2015 06/30/2015
Ullmann, Kimberly	Primary Teacher	Juniper ES	Temporary	01/01/2015 06/30/2015
Whitley, Gary	Counselor	Bend Sr HS	Temporary	10/01/2014 06/30/2015
Zysett, Russell	Athletic Director PE Teacher & Student Services	La Pine HS	Temporary	10/01/2014 06/30/2015



HUMAN RESOURCES

Education Center

*520 N.W. Wall Street
Bend, Oregon 97701-2699
(541) 383-6464
Fax: (541) 383-6117*

October 9, 2014

TO: Ron Wilkinson, Superintendent
Bend-La Pine School Board of Directors

FROM: Jay Mathisen, Assistant Superintendent of Human Resources & Strategic Planning

RE: Classified Recommended Hires and Resignations

The Human Resources Department recommends approval of the following hires and resignations at the School Board meeting on October 14, 2014:

Classified Hiring

Name	Position/Posting No.	Location	Temp/Regular Position	Hire Date
Berg, Linnea	105343 Nutrition Server I	Cascade	Reg 2 hrs / day	9/19/14
Brinkley-Widmer, Patricia	105304 EA – Student Supervision	Highland	Reg 1.25 hrs / day	9/18/14
Chambers, Jon	105423 Custodial Crew I	Education Center / Amity Creek	Reg 8 hrs / day	9/17/14
Crossley, Carrie	105448 EA – Student Instruction	Lava Ridge	Temp 6.25 hrs / day	9/25/14
Dieker, Sarah	105441 EA – Student Instruction	Lava Ridge	Temp 3.75 hrs / day	9/25/14
Ferris, Amy	105441 EA – Student Instruction	Lava Ridge	Temp 3.75 hrs / day	9/25/14
Hawkins, Lynn	105422 EA – Inclusion	Juniper	Reg 6.5 hrs / day	9/23/14
Hernandez, Teresa	105343 Nutrition Server I	Lava Ridge	Reg 3.25 hrs / day	9/17/14
Kessler, Jamie	105343 Nutrition Server I	Pilot Butte	Reg 3 hrs / day	9/19/14
Krause, Abby	105343 Nutrition Server I	Bend High	Reg 3.25 hrs / day	9/17/14
Johnson, Hayley	105343 Nutrition Server I	Bend High	Reg 3.25 hrs / day	9/17/14
Johnson, Lisa	105438 Attendance Secretary II	Mountain View	Reg 4.3 hrs / day	9/18/14
Langton, Stephanie	105343 Nutrition Server I	Lava Ridge	Reg 2.75 hrs / day	9/17/14
Lent, Guy	105423 Custodial Crew I	Mountain View	Reg 8 hrs / day	9/17/14
McClean, Glen	105423 Custodial Crew I	Buckingham	Reg 8 hrs / day	9/17/14
Niebergall, Andrew	105422 EA – Inclusion	Juniper	Reg 6.5 hrs / day	9/22/14
Northup, Debra	105343 Nutrition Server I	Buckingham	Reg 3.25 hrs / day	9/17/14



HUMAN RESOURCES

Education Center

520 N.W. Wall Street

Bend, Oregon 97701-2699

(541) 383-6464

Fax: (541) 383-6117

Payne, Shauna	105304 EA – Student Supervision	Highland	Reg 1.25 hrs / day	9/12/14
Purvis, Robbye	105343 Nutrition Server I	Summit	Reg 3.25 hrs / day	9/19/14
Reddings, Stephanie	105441 EA – Student Instruction	Lava Ridge	Temp 3.75 hrs / day	9/25/14
Rommel, Kathryn	105343 Nutrition Server I	High Desert	Reg 3 hrs / day	9/19/14
Russell, Katharine	105454 Attendance Secretary II / School Secretary I	La Pine High	Temp 8 hrs / day	10/1/14
Ruvalcaba, Kayla	105343 Nutrition Server I	Bear Creek	Reg 3.75 hrs / day	9/19/14
Saunders, Sarah	105343 Nutrition Server I	Juniper	Reg 3 hrs / day	9/17/14
Shaw, Dennis	105423 Custodial Crew I	Ensworth	Reg 8 hrs / day	9/17/14
Tran, Thuan	105343 Nutrition Server I	Bear Creek	Reg 3 hrs / day	9/19/14
Valdovinos, Blanca	105343 Nutrition Server I	Buckingham	Reg 3.25 hrs / day	9/17/14
Wendt, Renae	105343 Nutrition Server I	Ponderosa	Reg 3 hrs / day	9/17/14

Classified Resignations

Name	Position	Location	Resign Date
Schmaal, Donald	Special Education Bus Driver	Transportation	6/13/14

Please note that Don verbally notified us on 10-9-14 that he was resigning effective 6-13-14 and retired with PERS on 9-1-14.

Executive Summary

Jay Mathisen, Assistant Superintendent of Human Resources & Strategic Planning
Jim Boen, La Pine Middle School Principal & Director of South County Schools

Teacher Evaluation

In order to align with changes brought about by SB 290, direction from Oregon's Federal waiver, ODE guidance and what the District believes will promote best teaching and coaching practices our evaluation committee suggested changes to our evaluation rubric and systems.

The evaluation committee, is made up of a collection of teachers and administrators. It is that committee that designed our system several years ago, and yearly, has met to assess the need for change going forward. Our District administrative leadership team and association leadership have collaborated around the evaluation committee's recommendations and approve of them.

Recommended action: I move to approve the Teacher Evaluation recommendations brought forward from the collaborative efforts of the above mentioned.

Executive Summary

Ron Wilkinson, Superintendent

Achievement Compacts

Achievement Compact targets must be set by the School Board and submitted to the Oregon Education Investment Board, OEIB, each year. An advisory committee of teachers and administrators is provided for in the statute to review the data and make recommendations. The committee is recommending Board approval of the targets prepared by our Director of School Improvement, Dave VanLoo.

The Compact is a chart with many cells since targets must be completed for each sub-group as well as the total. Currently, the Investment Board is considering narrowing the scope of this procedure in the future, so we would anticipate it to become a more focused process in the future. Since the compact targets are currently so broad, we have not found it to be particularly valuable as a District resource in our efforts to be data driven and focus oriented.

Recommended Motion: I move to approve the Achievement Compact as presented.

Bend-LaPine Administrative SD 1 Achievement Compact 2014-2015

College and Career Ready: Are students completing high school ready for college or career?										
	2008-09 Cohort	Disadvantaged	2009-10 Cohort	Disadvantaged	2010-11 Cohort	Disadvantaged	2011-12 Cohort Goal	Disadvantaged Goal	2014-15 Cohort 4-yr. Goal	Disadvantaged 4-yr Goal
4-Year Graduation Rate	72.2%	64.0%	78.6%	70.6%	NA	NA	, \$'s	+&'s		
5-Year Completion Rate	84.1%	80.0%	NA	NA	, +'s	, 's				
3+ College Level Courses	NA	NA	NA	NA	NA	NA) \$'s) 's		
Post-Secondary Enrollment	63.4%	53.8%	NA	NA	NA	NA	*+'s), 's		

Progression: Are students making sufficient progress toward college and career readiness?										
	All Students 2011-12	Disadvantaged	All Students 2012-13	Disadvantaged	All Students 2013-14	Disadvantaged	Goal (All) 2014-15	Disadvantaged Goal	4-Year Goal (All) 2017-18	Disadvantaged 4-yr Goal
Kinder Assessment Participation	NA	NA	NA	NA	97.9%	97.7%	-) 's	-) 's		
3rd Grade Reading Proficiency	84.7%	77.9%	80.6%	72.6%	80.9%	71.5%) \$'s) 's		
5th Grade Math Proficiency	69.3%	56.4%	73.3%	60.1%	74.0%	63.2%) \$'s) 's		
6th Grade Not Chronically Absent	84.1%	79.4%	81.8%	77.5%	88.9%	85.2%	- \$'s	, , 's		
8th Grade Math Proficiency	73.0%	58.1%	73.0%	59.8%	73.6%	59.4%) \$'s) 's		
9th Grade On Track to Graduate	NA	NA	NA	NA	83.3%	72.7%	, * 's	+) 's		
9th Grade Not Chronically Absent	76.5%	69.5%	76.0%	64.9%	81.2%	74.9%	, * 's	, \$'s		

Equity: Are students succeeding across all buildings and populations?					
	2012-13	2013-14	2014-15	2015-16 Goal	4-Year Goal (2018-19)
Priority & Focus Schools (Includes schools with lowest overall rating on Oregon Report Card)	NA	3	3	\$	

Local Priorities: What other measures reflect key priorities in the district? (Optional, up to 3)										
	All Students 2011-12	Disadvantaged	All Students 2012-13	Disadvantaged	All Students 2013-14	Disadvantaged	Goal (All) 2014-15	Disadvantaged	4-Year Goal (All) 2017-18	Disadvantaged 4-yr Goal

Investment: What is the public investment in the district? (Does not include capital investments)				
	2012-13 (Actual)	2013-14 (Budgeted)	2014-15 (Budgeted)	2014-15 QEM calculation of district share
Formula Revenue	\$117,537,908	\$127,860,854	\$134,636,994	\$161,685,851
Local Revenue (Not passed through formula)			14,049,500	
Federal Revenue			13,278,000	
State Grants (Not passed through formula)			1,333,000	

KEY for 2013-2014 ACHIEVEMENT COMPACT

#UJWg'6c`X'1'8jghjWidfcj jXYX' cU

Bold = ODE provided outcome

Italics = District provided optional field

NA = Not Available

**Bend-LaPine Administrative SD 1 Achievement Compact
2014-2015**

Equity: Are students succeeding across all buildings and populations?

2008-09 Cohort

	Economically Disadvantaged	Limited English Proficient	Students with Disabilities	Black (Not of Hispanic origin)	Hispanic origin	American Indian / Alaska Native	Pacific Islander	Asian (Not included in Disadvantaged)	TAG (Not included in Disadvantaged)
4-Year Graduation Rate	65.3%	35.3%	45.2%	62.5%	48.8%	75.0%	50.0%	80.0%	91.6%
5-Year Completion Rate	81.7%	55.6%	67.6%	76.5%	65.8%	89.5%	100.0%	81.8%	94.8%
3+ College Level Courses									
Post-Secondary Enrollment	53.7%	47.8%	45.5%	60.0%	45.6%	47.1%	100.0%	100.0%	87.5%

2011-12 Sub-group Outcomes

	Economically Disadvantaged	Limited English Proficient	Students with Disabilities	Black (Not of Hispanic origin)	Hispanic origin	American Indian / Alaska Native	Pacific Islander	Asian (Not included in Disadvantaged)	TAG (Not included in Disadvantaged)
Kinder Assessment Participation									
3rd Grade Reading Proficiency	78.0%	56.6%	65.3%	75.0%	67.7%	55.6%	100.0%	90.0%	100.0%
5th Grade Math Proficiency	56.8%	40.0%	38.6%	72.7%	53.2%	57.1%	100.0%	71.4%	100.0%
6th Grade Not Chronically Absent	77.7%	80.0%	81.2%	84.6%	86.3%	69.2%		84.6%	88.8%
8th Grade Math Proficiency	60.0%	37.0%	28.1%	50.0%	54.7%	63.6%	100.0%	94.4%	98.8%
9th Grade On Track to Graduate									
9th Grade Not Chronically Absent	68.3%	77.1%	66.7%	78.6%	72.4%	66.7%	80.0%	93.8%	88.1%

2009-10 Cohort

	Economically Disadvantaged	Limited English Proficient	Students with Disabilities	Black (Not of Hispanic origin)	Hispanic origin	American Indian / Alaska Native	Pacific Islander	Asian (Not included in Disadvantaged)	TAG (Not included in Disadvantaged)
4-Year Graduation Rate	70.3%	42.9%	52.8%	69.2%	60.8%	56.3%	75.0%	100.0%	97.3%
5-Year Completion Rate									
3+ College Level Courses									
Post-Secondary Enrollment									

2012-13 Sub-group Outcomes

	Economically Disadvantaged	Limited English Proficient	Students with Disabilities	Black (Not of Hispanic origin)	Hispanic origin	American Indian / Alaska Native	Pacific Islander	Asian (Not included in Disadvantaged)	TAG (Not included in Disadvantaged)
Kinder Assessment Participation									
3rd Grade Reading Proficiency	72.2%	43.5%	55.1%	50.0%	58.4%	75.0%	100.0%	100.0%	100.0%
5th Grade Math Proficiency	59.3%	44.1%	37.1%	57.1%	54.4%	62.5%	33.3%	76.9%	100.0%
6th Grade Not Chronically Absent	75.7%	71.0%	76.4%	77.8%	79.4%	66.7%	100.0%	92.9%	91.8%
8th Grade Math Proficiency	62.4%	25.8%	38.5%	42.9%	52.5%	46.2%	100.0%	90.9%	100.0%
9th Grade On Track to Graduate									
9th Grade Not Chronically Absent	62.3%	55.6%	66.5%	50.0%	68.6%	72.7%	50.0%	70.0%	87.3%

Bend-LaPine Administrative SD 1 Achievement Compact

2014-2015

2010-11 Cohort									
	Economically Disadvantaged	Limited English Proficient	Students with Disabilities	Black (Not of Hispanic origin)	Hispanic origin	American Indian / Alaska Native	Pacific Islander	Asian (Not included in Disadvantaged)	TAG (Not included in Disadvantaged)
4-Year Graduation Rate									
5-Year Completion Rate	84.0%	59.0%	70.0%	79.0%	69.0%	92.0%	80.0%	85.0%	95.0%
3+ College Level Courses									
Post-Secondary Enrollment									

2013-14 Sub-group Outcomes									
	Economically Disadvantaged	Limited English Proficient	Students with Disabilities	Black (Not of Hispanic origin)	Hispanic origin	American Indian / Alaska Native	Pacific Islander	Asian (Not included in Disadvantaged)	TAG (Not included in Disadvantaged)
Kinder Assessment Participation	98.4%	99.1%	90.5%	100.0%	98.4%	85.7%	80.0%	93.3%	100.0%
3rd Grade Reading Proficiency	71.7%	45.7%	58.4%	40.0%	54.6%	66.7%	100.0%	78.6%	96.8%
5th Grade Math Proficiency	63.2%	44.4%	37.7%	53.8%	61.0%	60.0%	80.0%	85.0%	100.0%
6th Grade Not Chronically Absent	83.5%	86.2%	85.4%	100.0%	87.2%	88.9%	75.0%	92.9%	94.5%
8th Grade Math Proficiency	60.2%	20.7%	33.7%	62.5%	51.7%	50.0%	0.0%	76.9%	99.3%
9th Grade On Track to Graduate	72.0%	35.7%	65.1%	77.8%	67.3%	71.4%	60.0%	100.0%	93.7%
9th Grade Not Chronically Absent	72.7%	66.7%	75.6%	100.0%	78.5%	71.4%	100.0%	90.0%	89.9%

2011-12 Cohort Goals									
	Economically Disadvantaged	Limited English Proficient	Students with Disabilities	Black (Not of Hispanic origin)	Hispanic origin	American Indian / Alaska Native	Pacific Islander	Asian (Not included in Disadvantaged)	TAG (Not included in Disadvantaged)
4-Year Graduation Rate	70.0%	40.0%	50.0%	68.0%	53.0%	80.0%	55.0%	85.0%	96.0%
5-Year Completion Rate									
3+ College Level Courses	35.0%	35.0%	35.0%	35.0%	35.0%	35.0%	35.0%	35.0%	35.0%
Post-Secondary Enrollment	56.0%	50.0%	48.0%	63.0%	48.0%	50.0%	80.0%	80.0%	90.0%

2014-15 Sub-group Goals									
	Economically Disadvantaged	Limited English Proficient	Students with Disabilities	Black (Not of Hispanic origin)	Hispanic origin	American Indian / Alaska Native	Pacific Islander	Asian (Not included in Disadvantaged)	TAG (Not included in Disadvantaged)
Kinder Assessment Participation	95.0%	95.0%	95.0%	95.0%	95.0%	95.0%	95.0%	95.0%	95.0%
3rd Grade Reading Proficiency	40.0%	30.0%	30.0%	40.0%	40.0%	40.0%	40.0%	60.0%	70.0%
5th Grade Math Proficiency	40.0%	30.0%	30.0%	40.0%	40.0%	40.0%	40.0%	60.0%	70.0%
6th Grade Not Chronically Absent	86.0%	89.0%	88.0%	90.0%	90.0%	91.0%	78.0%	79.0%	95.0%
8th Grade Math Proficiency	40.0%	30.0%	30.0%	40.0%	40.0%	40.0%	40.0%	60.0%	70.0%
9th Grade On Track to Graduate	75.0%	38.0%	68.0%	80.0%	70.0%	74.0%	63.0%	90.0%	96.0%
9th Grade Not Chronically Absent	75.0%	69.0%	78.0%	90.0%	81.0%	74.0%	90.0%	93.0%	90.0%

Bend-LaPine Administrative SD 1 Achievement Compact 2014-2015

2014-15 Cohort Goals									
	Economically Disadvantaged	Limited English Proficient	Students with Disabilities	Black (Not of Hispanic origin)	Hispanic origin	American Indian / Alaska Native	Pacific Islander	Asian (Not included in Disadvantaged)	TAG (Not included in Disadvantaged)
4-Year Graduation Rate									
5-Year Completion Rate									
3+ College Level Courses									
Post-Secondary Enrollment									

2017-18 Sub-group Goals									
	Economically Disadvantaged	Limited English Proficient	Students with Disabilities	Black (Not of Hispanic origin)	Hispanic origin	American Indian / Alaska Native	Pacific Islander	Asian (Not included in Disadvantaged)	TAG (Not included in Disadvantaged)
Kinder Assessment Participation									
3rd Grade Reading Proficiency									
5th Grade Math Proficiency									
6th Grade Not Chronically Absent									
8th Grade Math Proficiency									
9th Grade On Track to Graduate									
9th Grade Not Chronically Absent									

KEY for 2013-2014 ACHIEVEMENT COMPACT

Italics Bold = District provided goal

Bold = ODE provided outcome

Italics = District provided optional field

NA = Not Available

October 8, 2014

To: Mr. Ron Wilkinson, Superintendent

From: Brad Henry, Chief Operations and Financial Officer

RE: Financial update for school year 2014-15

Mr. Wilkinson,

Following you will find the initial financial statement for the 2014-15 school year. This information includes actual data through September 30, 2014, with projections to the end of the year. As you are aware, one of the resources available for 2014-15 is the ending fund balance from 2013-14. The 2013-14 financial information is unaudited at this time as the final fieldwork will be complete next week. Our Comprehensive Annual Financial Report will be complete in December. We do not anticipate significant changes to the 2013-14 information.

We estimate our ending fund balance for 2013-14 (beginning for 2014-15) to be approximately \$7 million, which is \$50K more than our budgeted amount of \$6.95 million. This amount, combined with additional revenue generated from more students provides about \$1.5 million more in resources than was budgeted.

Our expenditures are also projected to be higher than budgeted. We have hired additional staff due to the higher than projected enrollment. Our online program continues to expand which will bring additional unbudgeted expenditures. And, our expenditures in Special Education are projected to be higher due to increased numbers of students who require additional services.

We project that our fund balance at the end of 2014-15 will be \$6.6 million, just under the budgeted amount. As we look to 2015-16, opening two new schools and implementing Full-Day Kindergarten, we will continue to work hard throughout this year to push resources into next year to help offset the anticipated higher costs going forward.

Please let me know if you have questions or comments.

Brad

Bend-La Pine Schools
Statement of Revenues and Expenditures
Fiscal Year to Date as of September 30, 2014 with projections to end of year
General Fund - Operations Sub-fund

	FY 2014-15		
	Adopted Budget	Projection to Year End	Budget Variance
Resources:			
Beginning Fund Balance	6,950,000	7,000,000	50,000
<u>Revenue</u>			
Formula revenue:			
Tax Revenue	60,537,258	60,537,258	-
State School Fund	67,018,598	68,270,516	1,251,918
Federal Forest Fees	-	-	-
Common School Fund	1,435,683	1,624,752	189,069
County School Fund	175,000	175,000	-
Total formula revenue	129,166,539	130,607,526	1,440,987
Earnings on Investments	200,000	200,000	-
Local Sources - Other	1,842,500	1,842,500	-
Intermediate Sources	1,750,000	1,750,000	-
State non-formula resources	1,037,000	1,037,000	-
Federal non-formula resources	28,000	28,000	-
Total Revenues	134,024,039	135,465,026	1,440,987
Total Resources	140,974,039	142,465,026	1,490,987
Expenditures:			
Salaries, payroll costs and benefits:			
Certified	45,741,417	46,406,398	(664,981)
Classified	17,783,450	17,833,450	(50,000)
Administrators and supervisors	5,969,490	6,120,223	(150,733)
All other salaries	1,761,662	1,990,000	(228,338)
Total Salaries	71,256,019	72,350,071	(1,094,052)
Payroll Costs & Benefits	39,018,573	39,091,385	(72,812)
Total salaries, payroll costs and benefits	110,274,592	111,441,456	(1,166,864)
Utilities & Purchased Svcs	13,822,694	14,222,694	(400,000)
Supplies, Texts, Tools	6,405,572	6,405,572	-
Equipment	31,480	31,480	-
Dues, Fees and Liability Insurance	760,448	760,448	-
Transfers	2,982,986	2,982,986	-
Total expenditures	134,277,772	135,844,636	(1,566,864)
Excess of Revenues over Expenditures	6,696,267	6,620,390	(75,877)
Operating Contingency	-	-	-
Unappropriated Ending Fund Balance	5,971,798	-	-
Fund Balance, Ending	724,469	6,620,390	(75,877)

Projected ending fund balance June 30, 2014

6,620,390

Fund Balance as a percent of revenues

4.24%

4.65%

Executive Summary

Lora Nordquist, Assistant Superintendent of Elementary Education

Bend-La Pine Schools' Choice Options Presentation

The purpose of this presentation is to review the district's philosophy about school choice, identify the variety of options for students at all levels, discuss the challenges and opportunities surrounding school choice options, and share current data related to these issues.

Included in the School Board packet is the following information:

- attendance and residency numbers for all district schools
- waiting list information from the district magnet schools

Elementary Residency and Attendance 2014-15

Reading the Chart:

- 1) Reading across the chart will identify where students living in the school listed on the left are enrolled. (School of enrollment)
- 2) Reading down the chart will identify the home school of students attending the school listed at the top. (School of residence)

	Amity Creek	Bear Creek	Buck- ingham	Elk Meadow	Ensworth	High Lakes	Highland	Jewell	Juniper	La Pine	Lava Ridge	Miller	Pine Ridge	Pond- erosa	Rosland	Three Rivers	Westside Village
Bear Creek	8		39	6	5	1	14	52	41	-	6	4	11	8	-	-	12
Buckingham	5	19		2	11	4	8	10	25	-	19	4	2	19	-	-	10
Elk Meadow	20	5	1		3	3	12	7	6	1	3	6	16	4	-	2	10
Ensworth	1	11	2	2		-	6	5	7	-	12	1	-	22	-	-	7
High Lakes	27	13	-	2	1		174	6	13	2	2	66	2	-	-	-	51
Jewell	9	13	8	8	5	5	20		10	-	5	4	10	5	2	1	16
Juniper	16	65	11	-	19	4	15	2		-	11	5	5	13	2	1	13
La Pine	-	-	-	-	1	-	-	-	1		-	-	-	-	18	5	-
Lava Ridge	14	9	10	1	4	1	17	3	9	-		6	1	24	-	-	14
Miller	48	8	-	2	1	31	80	2	9	-	-		2	3	-	-	32
Pine Ridge	17	12	3	14	2	10	26	10	18	-	10	18		1	2	1	14
Ponderosa	6	7	12	3	8	3	16	-	7	-	24	1	1		-	-	12
Rosland	-	4	-	1	-	-	-	-	2	39	-	-	-	-		34	2
Three Rivers	1	-	-	3	1	-	-	1	-	2	4	-	-	-	2	-	-
unlocated	2	4	16	5	-	3	3	2	1	3	13	5	-	1	-	16	-
Total In from other District schools	174	170	102	49	61	65	391	100	149	47	109	120	50	100	26	60	193
Total attending home boundary	-	542	408	464	174	580	-	518	414	342	457	470	581	469	146	179	-
Total In from Out of District	-	4	26	3	7	2	-	1	4	11	26	1	5	8	5	-	4
Total October 1 Enrollment	174	716	536	516	242	647	391	619	567	400	592	591	636	577	177	239	197

Total attending outside home boundary	1,966
Total attending home boundary	5,744
Total In from other Districts	107

Out Non- Magnet	Out to Magnets	Total Out	resident school
173	34	207	542
115	23	138	408
57	42	99	464
62	14	76	174
107	252	359	580
76	45	121	518
138	44	182	414
25	-	25	342
68	45	113	457
58	160	218	470
101	57	158	581
66	34	100	469
80	2	82	146
13	1	14	179
	5		79
1,208	758	1,966	5,823

Bend-La Pine Schools Middle School Residency and Attendance

Reading the Chart:

- 1) Reading across the chart will identify where students living in the school listed on the left are enrolled. (School of enrollment)
- 2) Reading down the chart will identify the home school of students attending the school listed at the top. (School of residence)

	CMS	HDMS	LPMS	PBMS	SVMS	Three Rivers	WSVS	REALMS	Total Out	resident school
Cascade		4	0	9	4	0	33	54	104	698
High Desert	38		3	15	9	0	18	26	109	694
La Pine	2	1		0	0	10	1	0	14	266
Pilot Butte	114	84	0		118	2	18	39	375	630
Sky View	23	11	0	23		0	11	23	91	641
Three Rivers	1	8	2	1	0		0	1	13	100
unlocated	6	6	1	8	7	15	1	1		
Total In from other District schools	184	114	6	56	138	27	82	144		
Total attending home boundary	698	694	266	630	641	100	0	0		
Total In from Out of District	5	1	9	11	47	0	0	1		
Total October 1 Enrollment	887	809	281	697	826	127	82	145		

Total attending outside home boundary	751
Total attending home boundary	3029
Total In from other Districts	74

Bend-La Pine Schools High School Residency and Attendance

Reading the Chart:

- 1) Reading across the chart will identify where students living in the school listed on the left are enrolled. (School of enrollment)
- 2) Reading down the chart will identify the home school of students attending the school listed at the top. (School of residence)

	Bend SH	LPSH	Marshall	MVHS	Summit	Total Out	resident school
Bend Senior		0	55	137	35	227	970
La Pine	29		4	3	1	37	381
Mountain View	170	0	44		50	264	1062
Summit	386	1	50	68		505	1381
BSH/LP Choice	96	23	6	5	3	133	
unlocated	30	9	7	23	21		
Total In from other District schools	711	33	166	236	110		
Total attending home boundary	970	381	0	1065	1381		
Total In from Out of District	33	12	3	60	25		
Total October 1 Enrollment	1714	426	169	1361	1516		

Total attending outside home boundary	1256
Total attending home boundary	3797
Total In from other Districts	133

2014-15 Lottery Wait List				
	Amity Creek	Bear Creek	Highland Elementary	Westside Village
Carry Over Wait List	21		53	37
New Wait List	23	30	92	
Total Wait List	44	30	145	37

Executive Summary

District-Owned Land

By: Brad Henry

Introduction

Over the years, Bend-La Pine Schools has accumulated parcels of land through various means including, purchase, gifts and exchanges. Most of this land is in use as a school or facility site, or is planned for such use in the future. Recently, we reviewed our holdings of vacant lands with members of our land committee to assess potential future use. In this process, we identified parcels in our inventory that have little or no use for District purposes and, as such, should be in consideration to become surplus property.

The Properties

The land committee is recommending the Board consider as surplus two parcels: (1) the .8 acre parcel known as Troy Field, across Bond Street from the Education Center and (2) the 1.64 acre parcel on Full Moon Drive, directly east of Ensworth Elementary.

Troy Field



Address: 690 NW Bond Street
Bend, Oregon 97701

The site is located due south of the old St. Francis School which is now McMenamins restaurant, bar, and overnight lodging. The site is located southeast from City Hall and 1 block east from the Deschutes County Library. The site is 1 block south of the Central Business District of Bend, Oregon.

Total SF: 0.80 Acres (34,848 SF)

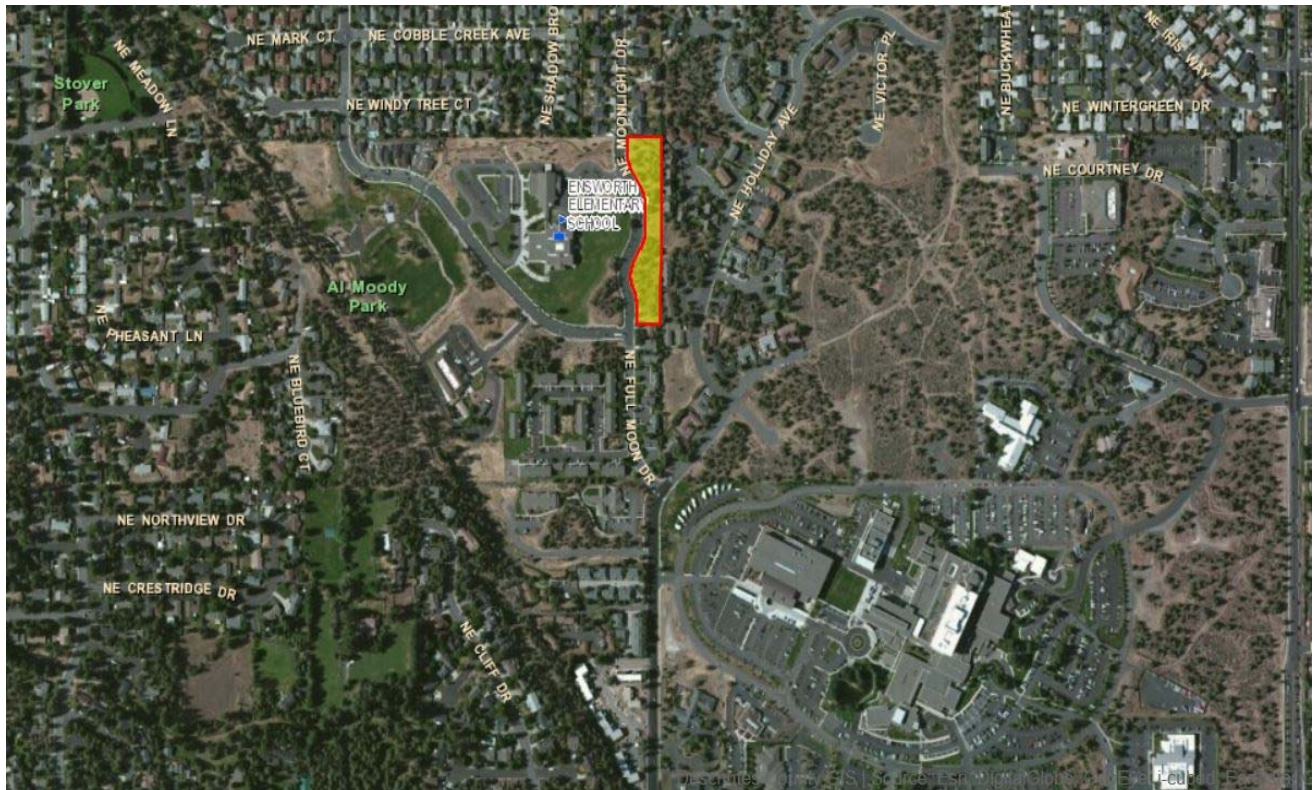
Frontage: 250 Ft., Depth: 140 Ft.

Zoning: Commercial Limited (CL)

Date of Acquisition: 1937

Originally, the site was the home to Troy Laundry. It was sold to the School District in 1937. Later used as an Ice Rink.

Ensworth parcel



Address: Full Moon Drive (a Sub-Division of Daggett Lane)
Bend, Oregon 97701

The site is located due east of Ensworth Elementary, and approximately 0.20 miles north of St. Charles Medical Center Campus.

Total SF: 1.64 Acres (71,438 SF)

Frontage: 720 Ft., Depth: 141 Ft.

Zoning: Medium Density Residential (RM)

Date of Acquisition: 2004

This 1.64 acre parcel, now divided by NE Full Moon Drive, was originally part of an 11.32 acre parcel which is now home to Ensworth Elementary.

Process

The District's administrative regulation DN-AR states that we review our inventory periodically and, if there are parcels that may be considered surplus, we bring those to the School Board. If the School Board would like to consider the land committee's recommendation to surplus these two parcels, the School Board will hold a public hearing before making a decision whether or not to accept the recommendation.

Surplus property

If the District owns property that has been determined to be surplus by the School Board, we may market the property for sale. Before we market the property for sale to the general public, we must give notice to "local public agencies" to determine their interest in the property. If a local public agency expresses interest then the Superintendent will recommend disposal of the property "in the best interest of the District".

If there is no interest from a local public agency, the District may use a sealed bid process or market and negotiate a sale through our real estate agent of record. Any bid or negotiated offer is subject to final approval of the School Board.

Use of funds

In the past, proceeds from the sale of real estate have been placed in the District's Land Reserve Account. The use of these funds is ultimately at the discretion of the School Board and has typically been used to purchase land for future school or facility sites. Most recently we sold a residential property known as "the Chamberlain House", the proceeds from which were ultimately used to help purchase the property for our new middle school. As we look for ways to meet our continuing capacity needs due to enrollment growth, the funds could also be combined with other funds and used to add capacity on an existing District owned site.