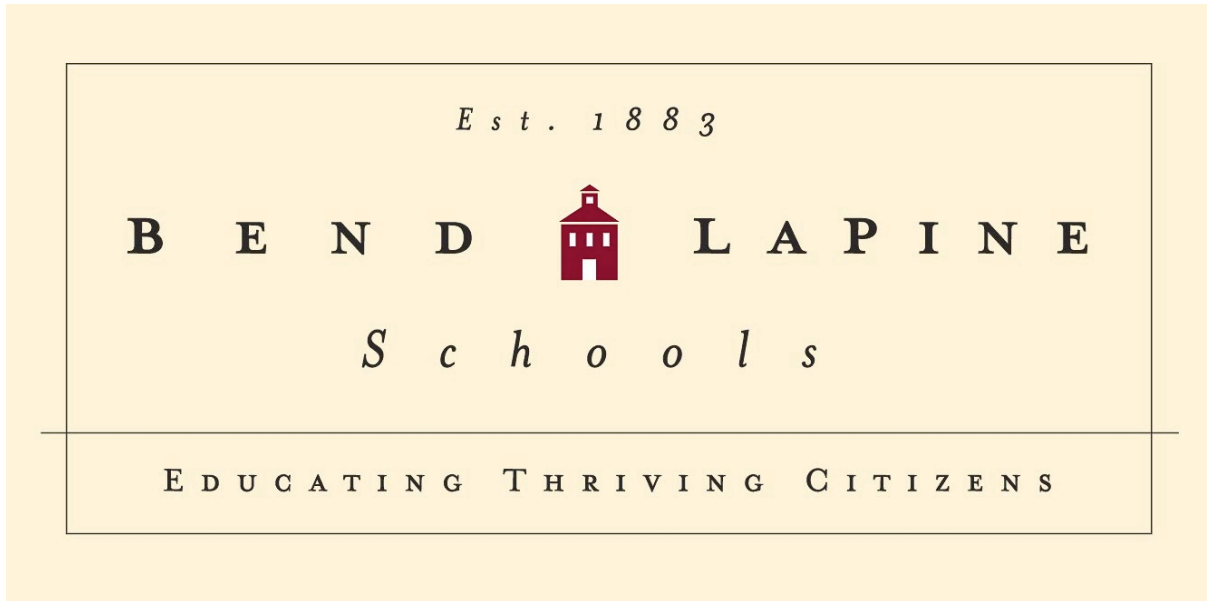


ADMINISTRATIVE SCHOOL DISTRICT #1



2013 BOND MANAGEMENT PLAN

TABLE OF CONTENTS

INTRODUCTION	Section 1
DISTRICT VISION AND GOALS	Section 2
PROGRAM STATEMENT	Section 3
BID PACKAGE TITLES & IDENTIFIED CONSTRAINTS	Section 4
BID PACKAGE DESCRIPTIONS & BUDGETS	Section 5
BID PACKAGE SCHEDULES	Section 6
OTHER BOND PROJECTS	Section 7
CAPITAL IMPROVEMENTS PROJECTS MASTER LIST	Section 8
GLOSSARY OF TERMS	Section 9

Administrative School District #1 will provide Construction Management Services for the Construction Bond Program passed by the voters on May 21, 2013. These services will be administered by the Office of Facilities Development located at 520 NW Wall Street, Room 330, Bend, Oregon, 97701.

The District has prepared this Management Plan for all work scheduled to be completed. This Management Plan describes the projects in detail, including current project scope, budgets, and preliminary schedules. The Management Plan provides the District with a viable tool for the successful implementation and delivery of each project within the available resources, known constraints and expressed objectives. The information contained in this Plan is current on the date of publishing.

The Management Plan is a dynamic tool that is updated and redefined as decisions and events occur. The Management Plan will require adjustments and changes as the projects are developed and scheduled, while the overall strategy, goals and implementation processes do not change.

The Management Plan includes:

District Vision and Goals

- District goals and objectives

Project Statement

- Identifies projects planned at each facility site

Bid Package Titles and Identified Constraints

- Bid Package Titles are identified
- Constraints are identified
- Progress updated for each bid package
- Critical Date Schedule provided for each bid package
- Summary budgets and expenses identified

Bid Package Descriptions and Budgets

- Describes each Bid Package by project name and number
- Details budget for each bid package

Bid Package Schedules

- Detailed proposed design/development/construction schedules for each bid package

Other Bond Projects

- Identifies Other Bond Projects not assigned to bid packages
- Identifies Other Bond Projects to be completed by the District Technology Support Center
- Identifies Other Bond Projects to be completed by the District Maintenance Department.

Glossary of Budget Terms

- Describes Terms used in compiling bid package budgets and schedules

DISTRICT VISION AND GOALS

PURPOSE: Educating each student to be a thriving citizen.

MISSION: Bend-La Pine Public Schools, in partnership with our community, will prepare each student with the knowledge, skills, confidence and personal integrity to be a thriving citizen in our ever-changing global society.

GOAL 1: All students receive an excellent education and are prepared for their future.

GOAL 2: All students learn to demonstrate personal integrity and responsible citizenship.

GOAL 3: All Schools provide a safe, nurturing environment conducive to learning.

GOAL 4: The school district operates with the highest levels of fiscal stewardship while maintaining effective and efficient practices to meet board goals.

The District is continuing to experience continual enrollment growth and requires both new facilities and expansions and renovations at existing facilities to provide the highest quality educational environment possible. The intent of this construction program is to provide new facilities to meet the most urgent need for classrooms, renovate, modify and expand existing facilities, meet the District's desire for energy savings and reduce the District's deferred maintenance backlog.

On May 21, citizens of Bend, La Pine and Sunriver approved a ballot measure to build new schools and fund projects that protect our community's investment in our schools and facilities. These projects would support economic growth and prosperity and go far to protect our quality of life now and for future generations.

The approved bond measure would authorize:

Bend-La Pine Schools to sell \$96 million in bonds to fund the construction of two new schools to address continued enrollment growth and 138 other safety, maintenance, and classroom addition projects on the community's behalf. These bond funds can only be used for capital expenses (new schools, new classrooms, land acquisition, roofs, etc.) and cannot be used for personnel or operations.

The bond measure would provide:

Maintenance and Preservation of Existing Buildings: Nearly half of the District's schools are over 30-years-old, and projects are proposed to update these facilities. The bond funding would allow the District to replace leaking roofs and windows, and upgrade heating, ventilation, electrical, and plumbing systems. The bond would also allow the District to make energy saving improvements to many of its schools and facilities.

Neighborhood Schools in High-Growth Areas: Construct one elementary school and one middle school to meet current and anticipated future overcrowding caused by continuing enrollment growth.

Safety Improvements: Make health and life safety upgrades including fire sprinklers, security systems, electrical wiring, intercoms and entrance redesign to provide improved visibility of visitor access. Add security fencing at several school sites. Add playground safety improvements at several elementary schools and safety improvements at high school physical education spaces including gyms, courts, and fields.

Science, Technology, Engineering, Arts, and Mathematics (STEAM) Classroom Additions and Renovations: Many of the District's classrooms that serve its applied programs in the STEAM disciplines were constructed 30-or-more years ago. The bond would allow the community to add and renovate classrooms and support spaces at existing schools, including modernization projects and increasing instructional spaces for Science, Technology, Engineering, Arts and Mathematics at Bend Senior High School, Mountain View High School, Summit High School, La Pine High School, and Three Rivers School.

PROGRAM STATEMENT

The general obligations of the bond passed in May 2013 are described as follows:

- a) **New Elementary School:** 300-student expandable elementary school.
- b) **New Middle School:** 800-student middle school.
- c) **Bear Creek Elementary School:** Replace/Repair all exterior siding and repaint, upgrade HVAC duct work, replace single pane windows, remodel and expansion of the kitchen.
- d) **Buckingham Elementary School:** Replace removable walls with permanent walls, remodel and expand the main office, replace gym floor, upgrade HVAC duct work, repair parking lot asphalt, remodel restrooms – including stalls and sinks.
- e) **Elk Meadow Elementary School:** Provide additional storage, repair/renovate north play field, convert HVAC controls to DDC, repair parking lot asphalt, replace T-12 light ballasts with T-8.
- f) **Ensworth Elementary School:** Replace grass with asphalt at north side.
- g) **High Lakes Elementary School:** Repair/renovate east playground.
- h) **Juniper Elementary:** Campus security fencing, replace boiler system, upgrade controls and ductwork, replace and repaint siding, replace asphalt at playground, repair asphalt at parking lot, replace single pane windows, replace building E roof, replace gym floor, remodel/expansion of kitchen.
- i) **Kenwood Elementary School:** Repair parking and playground asphalt, replace fence, renovate classrooms and hallways, remodel/expansion of kitchen.
- j) **La Pine Elementary School:** Repair parking lot asphalt, add DDC system to heating controls, upgrade exterior lighting to CCI, replace T-12 ballasts with T-8, repair/replace playground asphalt, computer lab walls.
- k) **Lava Ridge Elementary School:** Replace cabinet doors in classrooms, replace T-12 ballasts with T-8.
- l) **Pine Ridge Elementary School:** Install Weather Trak irrigation controllers, Acoustic treatment in the main office.
- m) **RE Jewell Elementary School:** Remodel all restrooms including new stalls and sinks, Create storage and restrooms in the gym, Install shower for life skills program, Install skylight in activity room, Replace North playground asphalt, Security fencing on north playground, Upgrade HVAC ductwork.

- n) **Thompson Elementary School:** Replace boiler system, upgrade controls, ductwork and plumbing in the custodial room, replace all windows, replace exterior and gym doors, renovate restrooms and add staff restrooms, fire sprinkler building, kitchen expansion and provide storage for cafeteria tables.
- o) **Three Rivers K-8 School:** Provide defined space for music program.
- p) **Cascade Middle School:** New bleachers in main gym, remove modular, correct erosion at north side of track, replace cafeteria table system, upgrade HVAC duct work, replace outside basketball court, repair south soffit and lights, add bleachers in new gym.
- q) **High Desert Middle School:** Carpet replacement as needed, VCT in hallways, replace T-12 light ballasts with T-8, resurface track, upgrade HVAC ductwork, repair asphalt
- r) **La Pine Middle School:** Remodel restrooms, add paving at rear of school, widen west drive, replace classroom floor coverings, replace cove base through out the school, heated sidewalk at the front entry, replace gym bleachers, reroof main and aux gym.
- s) **Pilot Butte Middle School:** Replace roof on B & D buildings and locker room, upgrade HVAC ductwork, remodel boys and girls locker rooms, replace floor covering as needed, replace and repair siding as necessary, remodel restrooms, resurface track, install snowmelt at building A stairs, replace stage curtains.
- t) **Sky View Middle School:** Parking lot reconfiguration, repair asphalt, operable gym windows for natural cooling, fencing at fields, resurface track and run ways.
- u) **Bend Senior High School:** Paint exterior of building, Art room remodel, replace exterior single pane windows in A, B & C halls, replace modular with permanent classrooms, baseball field irrigation replacement, resurface track, replace stadium poles and lights, add soccer field, remove and replace tennis courts, reconfigure library.
- v) **La Pine High School:** Remodel existing science labs, construct soccer field, upgrade hallways, replace windows that have broken seals, resurface track, stabilize asphalt edges, replace bleachers in main gym, add DDC system to the remainder of the building, repair asphalt parking lot, replace D-wing roof, replace cove base, upgrade HVAC duct work, replace stadium poles and lights, reroof single ply, cover dumpsters.
- w) **Marshall High School:** Repair asphalt parking lot, reroof older classroom wing, replace doors/windows in older classroom wing.
- x) **Mountain View High School:** Widen drive at stadium exit to allow left turn lane onto 27th street, remaining side walk replacement, remove and replace tennis courts, remodel foods room and second language areas, replace upper gym balcony gym floor and remodel existing space for exercise room, replace lighting connections, repair asphalt parking lot, replace/repair exterior doors and hardware, develop athletic field SW corner of site, provide awning at SW gym exit, replace windows with broken seals, upgrade hall lockers, replace lockers in team rooms and locker rooms, replace gym floor, replace stadium poles and lights, replace and reconfigure track, remodel stadium restrooms.
- y) **Summit High School:** Expand shop area, seal auditorium split faced block, additional storage addition.

- z) **Distribution Center:** Replace overhead doors and dock curtains, replace warehouse roof.
- aa) **Education Center:** New boilers, upgrade electrical service, boiler/data/storage outbuilding, remove replace south parking lot.
- bb) **Bend Transportation:** Add two work bays to south side of shop to include two additional bus lifts, plumbing replacement and electrical upgrade, provide permanent transportation administrative offices to include asphalt parking lot expansion and finishing site lighting upgrade.
- cc) **District Technology Improvements:** Various projects throughout the district.

BID PACKAGE TITLES & IDENTIFIED CONSTRAINTS

The following summary is the culmination of research and analysis of the issues that affect the \$96 million 2013 Capital Improvements Program. Bid Packages have been developed by identifying stand alone projects and combining individual projects. By combining multiple projects into one bid package, building renovations can be designed and issued on one set of construction documents in lieu of multiple small projects. In effect, the cost of procuring architectural and consultants services, building permits, special inspections, printing and distribution of bid documents on individual projects should be significantly reduced.

The purpose of this section is to summarize the various bid packages, schedules and budgets, identify constraints and special project requirements based on current known information. This information may be updated and modified as projects develop.

Bid Package 1 – New Elementary School

- Architect RFP'S/Contract Status: Awarded to Steele & Assoc. on 7/30/13
- Consultant RFP's/Contract Status: Completed
- Design Status: Completed
- Jurisdiction Site Plan Review and Building Permit Status: Completed
- Competitive Bidding/Construction Contract Status: Awarded to Kirby Nagelhout Construction
- Construction Status

- Estimated Construction Start: May 2014
- Estimated Substantial Completion (Move In): June 2015
- Estimated Final Completion: Dec. 2015

- Original Project Budget: \$15,036,200
- Original Land Purchase Budget: \$2,250,000
- Expenses as of (Date): (10/28/15) \$20,180,895
- Balance Remaining: -\$5,144,695

Bid Package 2 – New Middle School

- Architect RFP'S/Contract Status: Awarded to BBT Architects on 8/28/13
- Consultant RFP's/Contract Status: Completed
- Design Status: Completed
- Jurisdiction Site Plan Review and Building Permit Status: Completed
- Competitive Bidding/Construction Contract Status: Awarded to Kirby Nagelhout Construction
- Construction Status

- Estimated Construction Start: May 2014
- Estimated Substantial Completion (Move In): Sept. 2015
- Estimated Final Completion: Dec. 2015

- Original Budget: \$36,879,000
- Expenses as of (Date): (10/28/15) \$34,609,656
- Balance Remaining: \$2,269,344

Bid Package 3 – Bear Creek Elementary School, Elk Meadow Elementary School – Remodel and Renovations

- Architect RFP'S/Contract Status
- Consultant RFP's/Contract Status
- Design Status
- Jurisdiction Site Plan Review and Building Permit Status
- Competitive Bidding/Construction Contract Status
- Construction Status

- Estimated Construction Start:
- Estimated Substantial Completion (Move In):
- Estimated Final Completion:

- Original Budget: \$835,682
- Expenses as of (Date):
- Balance Remaining:

Bid Package 4 – Buckingham Elementary – Addition and Remodel

- Architect RFP'S/Contract Status: Awarded to BLRB on 10/21/13
- Consultant RFP's/Contract Status: Completed
- Design Status: Completed
- Jurisdiction Site Plan Review and Building Permit Status: Completed
- Competitive Bidding/Construction Contract Status: Awarded to Griffin Construction
- Construction Status

- Estimated Construction Start: May 2014
- Estimated Substantial Completion (Move In): Sept. 2014
- Estimated Final Completion: Sept. 2014

- Original Budget: \$1,689,887
- Expenses as of (Date): \$2,122,011.64
- Balance Remaining: -\$432,124.64

Bid Package 5 – Juniper Elementary School – Renovations

- Architect RFP'S/Contract Status – Awarded to Steele Assoc. on 10/15/15
- Consultant RFP's/Contract Status – N/A
- Design Status – In Process
- Jurisdiction Site Plan Review and Building Permit Status
- Competitive Bidding/Construction Contract Status – In process
- Construction Status

- Estimated Construction Start: June 2016
- Estimated Substantial Completion (Move In): August 2016
- Estimated Final Completion: December 2016

- Original Budget: \$1,610,741
- Expenses as of (Date):
- Balance Remaining:

Bid Package 6 – Kenwood Elementary School – Renovations

- Architect RFP'S/Contract Status: Awarded to BBT Architects on 10/27/14
- Consultant RFP's/Contract Status: Completed
- Design Status: Completed
- Jurisdiction Site Plan Review and Building Permit Status: Completed
- Competitive Bidding/Construction Contract Status: Awarded to P&C Construction
- Construction Status

- Estimated Construction Start: June 2015
- Estimated Substantial Completion (Move In): August 2015
- Estimated Final Completion: December 2015

- Original Budget: \$4,079,025
- Expenses as of (Date): \$3,235,726
- Balance Remaining: \$843,299

Bid Package 7 – RE Jewell Elementary School – Renovations

- Architect RFP'S/Contract Status: Awarded to Steele Associates Architecture on 10/27/14
- Consultant RFP's/Contract Status: Completed
- Design Status: Completed
- Jurisdiction Site Plan Review and Building Permit Status: Completed
- Competitive Bidding/Construction Contract Status: Awarded to P&C Construction
- Construction Status

- Estimated Construction Start: June 2015
- Estimated Substantial Completion (Move In): August 2015
- Estimated Final Completion: December 2015

- Original Budget: \$977,137
- Expenses as of (Date): (10/28/15) \$995,538
- Balance Remaining: \$18,401

Bid Package 8 – Thompson Elementary School – Addition and Renovations

- Architect RFP'S/Contract Status – Awarded to BBT Architects on 10/15/15
- Consultant RFP's/Contract Status – N/A
- Design Status – In process
- Jurisdiction Site Plan Review and Building Permit Status – In process
- Competitive Bidding/Construction Contract Status – In process
- Construction Status

- Estimated Construction Start: June 2016
- Estimated Substantial Completion (Move In): August 2016
- Estimated Final Completion: December 2016

- Original Budget: \$1,694,228
- Expenses as of (Date):
- Balance Remaining:

Bid Package 9 – La Pine Middle School – Renovations

- Architect RFP'S/Contract Status – Awarded to Steele Assoc. on 10/15/15
- Consultant RFP's/Contract Status – N/A
- Design Status – In process
- Jurisdiction Site Plan Review and Building Permit Status
- Competitive Bidding/Construction Contract Status – In process
- Construction Status

- Estimated Construction Start: June 2016
- Estimated Substantial Completion (Move In): August 2016
- Estimated Final Completion: December 2016

- Original Budget: \$1,499,242
- Expenses as of (Date):
- Balance Remaining:

Bid Package 10 – Cascade Middle School, High Desert Middle School, Sky View Middle School – Renovations

- Architect RFP'S/Contract Status
- Consultant RFP's/Contract Status
- Design Status
- Jurisdiction Site Plan Review and Building Permit Status
- Competitive Bidding/Construction Contract Status
- Construction Status

- Estimated Construction Start:
- Estimated Substantial Completion (Move In):
- Estimated Final Completion:

- Original Budget: \$1,040,008
- Expenses as of (Date):
- Balance Remaining:

Bid Package 11 – Pilot Butte Middle School – Renovations

- Architect RFP'S/Contract Status – Awarded to Steele Assoc. on 10/15/15
- Consultant RFP's/Contract Status – N/A
- Design Status – In process
- Jurisdiction Site Plan Review and Building Permit Status
- Competitive Bidding/Construction Contract Status – In process
- Construction Status

- Estimated Construction Start: June 2016
- Estimated Substantial Completion (Move In): August 2016
- Estimated Final Completion: December 2016

- Original Budget: \$2,248,307
- Expenses as of (Date):
- Balance Remaining:

Bid Package 12 – Bend Senior High School – Addition and Renovations

- Architect RFP'S/Contract Status: Awarded to Steele Associates Architecture on 10/27/14
- Consultant RFP's/Contract Status: Completed
- Design Status: Completed
- Jurisdiction Site Plan Review and Building Permit Status: Completed
- Competitive Bidding/Construction Contract Status: Awarded to P&C Construction
- Construction Status
 - Estimated Construction Start: June 2015
 - Estimated Substantial Completion (Move In): August 2015
 - Estimated Final Completion: December 2015
- Original Budget: \$4,974,693
- Expenses as of (Date): (10/28/15) \$6,212,146
- Balance Remaining: -\$1,237,453

Bid Package 13 – La Pine High School – Renovations

- Architect RFP'S/Contract Status: Awarded to BBT Architects on 10/27/14
- Consultant RFP's/Contract Status: Completed
- Design Status: Completed
- Jurisdiction Site Plan Review and Building Permit Status: Completed
- Competitive Bidding/Construction Contract Status: Awarded to P&C Construction
- Construction Status
 - Estimated Construction Start: June 2015
 - Estimated Substantial Completion (Move In): August 2015
 - Estimated Final Completion: December 2015
- Original Budget: \$3,134,247
- Expenses as of (Date): (10/28/15) \$3,535,625
- Balance Remaining: -\$401,378

Bid Package 14 – Mountain View High School – Remodel and Renovations

- Architect RFP'S/Contract Status: Awarded to BLRB on 10/21/13
- Consultant RFP's/Contract Status: Completed
- Design Status: Completed
- Jurisdiction Site Plan Review and Building Permit Status: Completed
- Competitive Bidding/Construction Contract Status: Awarded to Griffin Construction
- Construction Status
 - Estimated Construction Start: May 2014
 - Estimated Substantial Completion (Move In): Sept. 2014
 - Estimated Final Completion: Sept. 2014
- Original Budget: \$4,547,284
- Expenses as of (Date): \$4,459,410.06
- Balance Remaining: \$87,873.94

Bid Package 15 – Summit High School – Addition

- Architect RFP'S/Contract Status: Awarded to BLRB on 10/21/13
- Consultant RFP's/Contract Status: Completed
- Design Status: Completed
- Jurisdiction Site Plan Review and Building Permit Status: Completed
- Competitive Bidding/Construction Contract Status: Awarded to Griffin Construction
- Construction Status
 - Estimated Construction Start: May 2014
 - Estimated Substantial Completion (Move In): Sept. 2014
 - Estimated Final Completion: Sept. 2014
- Original Budget: \$1,199,542
- Expenses as of (Date): \$1,459,121
- Balance Remaining: -\$259,579

Bid Package 16 – Distribution Center, Marshall High School – Remodel and Renovations

- Architect RFP'S/Contract Status
- Consultant RFP's/Contract Status
- Design Status
- Jurisdiction Site Plan Review and Building Permit Status
- Competitive Bidding/Construction Contract Status
- Construction Status
 - Estimated Construction Start:
 - Estimated Substantial Completion (Move In):
 - Estimated Final Completion:
- Original Budget: \$545,312
- Expenses as of (Date):
- Balance Remaining:

Bid Package 17 – Education Center – Renovations

- Architect RFP'S/Contract Status – Awarded to BBT Architects on 10/15/15
- Consultant RFP's/Contract Status – In process
- Design Status – In process
- Jurisdiction Site Plan Review and Building Permit Status
- Competitive Bidding/Construction Contract Status – In process
- Construction Status
 - Estimated Construction Start: June 2016
 - Estimated Substantial Completion (Move In): August 2016
 - Estimated Final Completion: December 2016
- Original Budget: \$2,944,330

- Expenses as of (Date):
- Balance Remaining:

Bid Package 18 – Bend Transportation – New Facility

- Architect RFP'S/Contract Status
- Consultant RFP's/Contract Status
- Design Status
- Jurisdiction Site Plan Review and Building Permit Status
- Competitive Bidding/Construction Contract Status
- Construction Status

- Estimated Construction Start:
- Estimated Substantial Completion (Move In):
- Estimated Final Completion:

- Original Budget: \$2,366,568
- Expenses as of (Date):
- Balance Remaining:

TOTAL ALL BID PACKAGES = \$89,551,433

BID PACKAGE DESCRIPTIONS & BUDGETS

Includes identified bid packages to date and their budget breakdowns.

BID PACKAGE #1 - NEW ELEMENTARY SCHOOL

Bid Package Includes: (140) New 47,000 Sq/Ft 300 Student Elementary School

PROJECT BUDGET

CONSTRUCTION AND EQUIPMENT:

Construction/General Contractor		\$10,340,000
Construction Contingency	0.0700	\$775,300
Furniture and Equipment (Bond Qualified)	0.0350	\$361,900
Technology Equipment (Bond Qualified)	0.0150	\$155,100
Off-site Construction Cost (Owner)		\$250,000

SUBTOTAL >>> \$11,882,300

PROFESSIONAL SERVICES:

Architect/Engineer	0.0800	\$827,200
Other Professional Services	0.0100	\$103,400
Traffic Study	0.0025	\$25,000
Site Civil Survey	0.0080	\$80,500
Geotechnical Investigations	0.0050	\$50,000
Inspection and Testing	0.0075	\$75,000
Commissioning Services	0.0100	\$100,000

SUBTOTAL >>> \$1,261,100

OWNER COSTS:

Bid Advert./Bid Documents	0.0010	\$10,000
Insurances	0.0075	\$75,000
Legal Fees	0.0050	\$50,000
Land Use, SDC's, Bldg. Permits	0.1000	\$1,034,000
Project Contingency	0.0300	\$310,200
Project Management	0.0400	\$413,600
Land Cost		\$2,250,000

SUBTOTAL >>> \$4,142,800

TOTAL PROJECT BUDGET >>> \$17,286,200

BID PACKAGE #2 - NEW MIDDLE SCHOOL

Project Number: (139) New 115,00 Sq/Ft Middle School

PROJECT BUDGET

CONSTRUCTION AND EQUIPMENT:

Construction/General Contractor		\$25,300,000
Construction Contingency	0.0700	\$1,859,550
Furniture and Equipment (Bond Qualifie	0.0350	\$885,500
Technology Equipment (Bond Qualified	0.0150	\$379,500
Off-site Construction Cost (Owner)		\$700,000

SUBTOTAL >>> \$29,124,550

PROFESSIONAL SERVICES:

Architect/Engineer	0.0800	\$2,024,000
Other Professional Services	0.0100	\$253,000
Traffic Study	0.0025	\$63,250
Site Civil Survey	0.0080	\$202,400
Geotechnical Investigations	0.0050	\$126,500
Inspection and Testing	0.0075	\$189,750
Commissioning Services	0.0100	\$253,000

SUBTOTAL >>> \$3,111,900

OWNER COSTS:

Bid Advert./Bid Documents	0.0010	\$25,300
Insurances	0.0075	\$189,750
Legal Fees	0.0050	\$126,500
Land Use, SDC's, Bldg. Permits	0.1000	\$2,530,000
Project Contingency	0.0300	\$759,000
Project Management	0.0400	\$1,012,000
Land Cost		\$0

SUBTOTAL >>> \$4,642,550

TOTAL PROJECT BUDGET >>> \$36,879,000

BID PACKAGE #3.1 - BEAR CREEK ELEMENTARY SCHOOL

Project Number: (1) Replace/Repair all exterior siding and
repaint, (3) Replace single pane windows,
(130) Remodel and expansion of the kitchen

PROJECT BUDGET

CONSTRUCTION AND EQUIPMENT:

Construction/General Contractor		\$307,155
Construction Contingency	0.1500	\$45,306
Furniture and Equipment (Bond Qualified)	0.0500	\$0
Technology Equipment (Bond Qualified)	0.0300	\$2,503
Off-site Construction Cost (Owner)		\$0

SUBTOTAL >>> \$354,964

PROFESSIONAL SERVICES:

Architect/Engineer	0.1200	\$36,859
Other Professional Services	0.0100	\$3,072
Traffic Study	0.0025	\$0
Site Civil Survey	0.0080	\$0
Geotechnical Investigations	0.0050	\$0
Inspection and Testing	0.0075	\$2,304
Commissioning Services	0.0100	\$3,072

SUBTOTAL >>> \$45,305

OWNER COSTS:

Bid Advert./Bid Documents	0.0075	\$2,304
Insurances	0.0075	\$2,304
Legal Fees	0.0050	\$0
Land Use, SDC's, Bldg. Permits	0.0500	\$15,358
Project Contingency	0.0300	\$9,215
Project Management	0.0400	\$12,286
Land Cost		\$0

SUBTOTAL >>> \$41,466

TOTAL PROJECT BUDGET >>> \$441,736

BID PACKAGE #3.2 - ELK MEADOW ELEMENTARY SCHOOL

Project Number: (10) Provide additional storage, (11) Repair/Renovate north play field, (13) Repair parking lot asphalt

PROJECT BUDGET

CONSTRUCTION AND EQUIPMENT:

Construction/General Contractor		\$275,486
Construction Contingency	0.1500	\$41,186
Furniture and Equipment (Bond Qualified)	0.0500	\$0
Technology Equipment (Bond Qualified)	0.0300	\$0
Off-site Construction Cost (Owner)		\$0

SUBTOTAL >>> \$316,672

PROFESSIONAL SERVICES:

Architect/Engineer	0.1200	\$33,058
Other Professional Services	0.0100	\$2,755
Traffic Study	0.0025	\$0
Site Civil Survey	0.0080	\$2,204
Geotechnical Investigations	0.0050	\$0
Inspection and Testing	0.0075	\$2,066
Commissioning Services	0.0100	\$0

SUBTOTAL >>> \$40,083

OWNER COSTS:

Bid Advert./Bid Documents	0.0075	\$2,066
Insurances	0.0075	\$2,066
Legal Fees	0.0050	\$0
Land Use, SDC's, Bldg. Permits	0.0500	\$13,774
Project Contingency	0.0300	\$8,265
Project Management	0.0400	\$11,019
Land Cost		\$0

SUBTOTAL >>> \$37,191

TOTAL PROJECT BUDGET >>> \$393,946

BID PACKAGE #4 - BUCKINGHAM ELEMENTARY SCHOOL

Project Number: (5) Remodel and expand the main office, (6) Replace gym floor, (8) Repair parking lot asphalt, (9) Remodel restrooms – including stalls and sinks

PROJECT BUDGET

CONSTRUCTION AND EQUIPMENT:

Construction/General Contractor		\$991,306
Construction Contingency	0.1500	\$150,350
ADA		\$212,750
Furniture and Equipment (Bond Qualified)	0.0500	\$42,550
Technology Equipment (Bond Qualified)	0.0300	\$0
Off-site Construction Cost (Owner)		\$0

SUBTOTAL >>> \$1,396,956

PROFESSIONAL SERVICES:

Architect/Engineer	0.1000	\$99,131
Other Professional Services	0.0200	\$19,826
Traffic Study	0.0025	\$0
Site Civil Survey	0.0080	\$7,930
Geotechnical Investigations	0.0050	\$4,957
Inspection and Testing	0.0075	\$7,435
Commissioning Services	0.0200	\$19,826

SUBTOTAL >>> \$159,105

OWNER COSTS:

Bid Advert./Bid Documents	0.0075	\$7,435
Insurances	0.0075	\$7,435
Legal Fees	0.0050	\$0
Land Use, SDC's, Bldg. Permits	0.0500	\$49,565
Project Contingency	0.0300	\$29,739
Project Management	0.0400	\$39,652
Land Cost		\$0

SUBTOTAL >>> \$133,826

TOTAL PROJECT BUDGET >>> \$1,689,887

BID PACKAGE #5 - JUNIPER ELEMENTARY SCHOOL

Project Number: (17) Campus security fencing, (18) Replace boiler system, Upgrade controls and ductwork, (19) Replace and repaint siding, (20) Replace asphalt at playground, Repair asphalt at parking lot, (21) Replace single pane windows.

(22) Replace building E roof, (23) Replace gym floor, (131) Remodel/expansion of kitchen.

CONSTRUCTION AND EQUIPMENT:

Construction/General Contractor		\$1,105,820
Construction Contingency	0.1500	\$168,639
ADA		\$26,265
Furniture and Equipment (Bond Qualified)	0.0500	\$0
Technology Equipment (Bond Qualified)	0.0300	\$3,152
Off-site Construction Cost (Owner)		\$0

SUBTOTAL >>> \$1,303,876

PROFESSIONAL SERVICES:

Architect/Engineer	0.1000	\$110,582
Other Professional Services	0.0100	\$11,058
Traffic Study	0.0025	\$0
Site Civil Survey	0.0050	\$5,529
Geotechnical Investigations	0.0050	\$0
Inspection and Testing	0.0075	\$8,294
Commissioning Services	0.0200	\$22,116

SUBTOTAL >>> \$157,579

OWNER COSTS:

Bid Advert./Bid Documents	0.0075	\$8,294
Insurances	0.0075	\$8,294
Legal Fees	0.0050	\$0
Land Use, SDC's, Bldg. Permits	0.0500	\$55,291
Project Contingency	0.0300	\$33,175
Project Management	0.0400	\$44,233
Land Cost		\$0

SUBTOTAL >>> \$149,286

TOTAL PROJECT BUDGET >>> \$1,610,741

BID PACKAGE #6 - KENWOOD ELEMENTARY SCHOOL

Project Number: (24) Repair parking and playground asphalt, (25)
Replace fence, (26) Renovate classrooms and
hallways, (132) Remodel/expansion of kitchen.

PROJECT BUDGET

CONSTRUCTION AND EQUIPMENT:

Construction/General Contractor		\$2,337,939
Construction Contingency	0.1500	\$360,860
ADA		\$544,847
Furniture and Equipment (Bond Qualifie	0.0500	\$125,543
Technology Equipment (Bond Qualified	0.0300	\$2,610
Off-site Construction Cost (Owner)		\$0

SUBTOTAL >>> **\$3,371,799**

PROFESSIONAL SERVICES:

Architect/Engineer	0.1200	\$280,553
Other Professional Services	0.0300	\$70,138
Traffic Study	0.0025	\$0
Site Civil Survey	0.0080	\$0
Geotechnical Investigations	0.0050	\$0
Inspection and Testing	0.0075	\$17,535
Commissioning Services	0.0200	\$0

SUBTOTAL >>> **\$368,225**

OWNER COSTS:

Bid Advert./Bid Documents	0.0075	\$17,535
Insurances	0.0075	\$17,535
Legal Fees	0.0050	\$11,690
Land Use, SDC's, Bldg. Permits	0.0550	\$128,587
Project Contingency	0.0300	\$70,138
Project Management	0.0400	\$93,518
Land Cost		\$0

SUBTOTAL >>> **\$339,001**

TOTAL PROJECT BUDGET >>> **\$4,079,025**

BID PACKAGE #7 - RE JEWELL ELEMENTARY SCHOOL

Project Number: (37) Remodel all restrooms including new stalls and sinks, (38) Create storage and restrooms in the gym, Install shower for life skills program, Install skylight in activity room, (39) Replace North playground asphalt.
(40) Security fencing on north playground.

PROJECT BUDGET

CONSTRUCTION AND EQUIPMENT:

Construction/General Contractor		\$680,242
Construction Contingency	0.1500	\$102,686
Furniture and Equipment (Bond Qualified)	0.0500	\$0
Technology Equipment (Bond Qualified)	0.0300	\$0
Off-site Construction Cost (Owner)		\$0

SUBTOTAL >>> \$782,928

PROFESSIONAL SERVICES:

Architect/Engineer	0.1200	\$81,629
Other Professional Services	0.0100	\$6,802
Traffic Study	0.0025	\$0
Site Civil Survey	0.0080	\$5,442
Geotechnical Investigations	0.0050	\$0
Inspection and Testing	0.0075	\$5,102
Commissioning Services	0.0200	\$0

SUBTOTAL >>> \$98,975

OWNER COSTS:

Bid Advert./Bid Documents	0.0075	\$5,102
Insurances	0.0075	\$5,102
Legal Fees	0.0050	\$3,401
Land Use, SDC's, Bldg. Permits	0.0500	\$34,012
Project Contingency	0.0300	\$20,407
Project Management	0.0400	\$27,210
Land Cost		\$0

SUBTOTAL >>> \$95,234

TOTAL PROJECT BUDGET >>> \$977,137

BID PACKAGE #8 - THOMPSON ELEMENTARY SCHOOL

Project Number: (42) Replace boiler system, Upgrade controls, ductwork and plumbing in the custodial room, (43) Replace all windows, (44) Replace exterior and gym doors, (45) Renovate restrooms and add staff restrooms, (46) Fire sprinkler building, (133) Kitchen expansion and provide storage for cafeteria tables.

PROJECT BUDGET

CONSTRUCTION AND EQUIPMENT:

Construction/General Contractor		\$1,117,383
Construction Contingency	0.1500	\$162,885
ADA		\$75,215
Furniture and Equipment (Bond Qualified)	0.0500	\$0
Technology Equipment (Bond Qualified)	0.0300	\$6,324
Off-site Construction Cost (Owner)		\$0

SUBTOTAL >>> **\$1,361,807**

PROFESSIONAL SERVICES:

Architect/Engineer	0.1000	\$111,738
Other Professional Services	0.0300	\$33,521
Traffic Study	0.0025	\$0
Site Civil Survey	0.0050	\$5,587
Geotechnical Investigations	0.0050	\$0
Inspection and Testing	0.0075	\$8,380
Commissioning Services	0.0200	\$22,348

SUBTOTAL >>> **\$181,575**

OWNER COSTS:

Bid Advert./Bid Documents	0.0075	\$8,380
Insurances	0.0075	\$8,380
Legal Fees	0.0050	\$0
Land Use, SDC's, Bldg. Permits	0.0500	\$55,869
Project Contingency	0.0300	\$33,521
Project Management	0.0400	\$44,695
Land Cost		\$0

SUBTOTAL >>> **\$150,846**

TOTAL PROJECT BUDGET >>> **\$1,694,228**

BID PACKAGE #9.1 - LA PINE ELEMENTARY SCHOOL

Project Number: (27) Repair parking lot asphalt, (31) Repair/replace playground asphalt, (32) Computer lab walls

PROJECT BUDGET

CONSTRUCTION AND EQUIPMENT:

Construction/General Contractor		\$58,356
Construction Contingency	0.0150	\$9,044
Furniture and Equipment (Bond Qualified)	0.0500	\$0
Technology Equipment (Bond Qualified)	0.0300	\$0
Off-site Construction Cost (Owner)		\$0

SUBTOTAL >>> \$67,400

PROFESSIONAL SERVICES:

Architect/Engineer	0.1200	\$7,003
Other Professional Services	0.0300	\$1,751
Traffic Study	0.0025	\$0
Site Civil Survey	0.0200	\$1,167
Geotechnical Investigations	0.0050	\$0
Inspection and Testing	0.0200	\$1,167
Commissioning Services	0.0200	\$0

SUBTOTAL >>> \$11,088

OWNER COSTS:

Bid Advert./Bid Documents	0.0075	\$438
Insurances	0.0075	\$438
Legal Fees	0.0050	\$0
Land Use, SDC's, Bldg. Permits	0.0500	\$0
Project Contingency	0.0300	\$1,751
Project Management	0.0400	\$2,334
Land Cost		\$0

SUBTOTAL >>> \$4,961

TOTAL PROJECT BUDGET >>> \$83,448

BID PACKAGE #9.2 - LA PINE MIDDLE SCHOOL

Project Number: (61) Remodel restrooms, (62) Add paving at rear of school, widen West drive, (63) Replace classroom floor coverings, (64) Replace cove base through out the school, (65) Heated sidewalk at the front entry, (66) Replace gym bleachers

PROJECT BUDGET

CONSTRUCTION AND EQUIPMENT:

Construction/General Contractor		\$990,066
Construction Contingency	0.1500	\$148,099
Furniture and Equipment (Bond Qualifie	0.0500	\$0
Technology Equipment (Bond Qualified	0.0300	\$0
Off-site Construction Cost (Owner)		\$0

SUBTOTAL >>> **\$1,138,165**

PROFESSIONAL SERVICES:

Architect/Engineer	0.1200	\$118,808
Other Professional Services	0.0100	\$9,901
Traffic Study	0.0025	\$0
Site Civil Survey	0.0050	\$4,950
Geotechnical Investigations	0.0050	\$0
Inspection and Testing	0.0075	\$7,425
Commissioning Services	0.0200	\$0

SUBTOTAL >>> **\$141,084**

OWNER COSTS:

Bid Advert./Bid Documents	0.0075	\$7,425
Insurances	0.0075	\$7,425
Legal Fees	0.0050	\$0
Land Use, SDC's, Bldg. Permits	0.0500	\$49,503
Project Contingency	0.0300	\$32,588
Project Management	0.0400	\$39,603
Land Cost		\$0

SUBTOTAL >>> **\$136,545**

TOTAL PROJECT BUDGET >>> **\$1,415,794**

BID PACKAGE #10.1 - CASCADE MIDDLE SCHOOL

Project Number: (48) New bleachers in main gym, (49) Remove modular, (50) Correct erosion at North side of track, (51) Replace cafeteria table system, (53) Replace outside basketball court, (54) Repair south soffit and lights, (55) Add bleachers in new gym

PROJECT BUDGET

CONSTRUCTION AND EQUIPMENT:

Construction/General Contractor		\$362,511
Construction Contingency	0.1500	\$53,563
Furniture and Equipment (Bond Qualifie	0.0500	\$0
Technology Equipment (Bond Qualified	0.0300	\$0
Off-site Construction Cost (Owner)		\$0

SUBTOTAL >>> \$416,074

PROFESSIONAL SERVICES:

Architect/Engineer	0.1200	\$43,501
Other Professional Services	0.0100	\$3,625
Traffic Study	0.0025	\$0
Site Civil Survey	0.0080	\$2,900
Geotechnical Investigations	0.0050	\$0
Inspection and Testing	0.0075	\$2,719
Commissioning Services	0.0200	\$0

SUBTOTAL >>> \$52,745

OWNER COSTS:

Bid Advert./Bid Documents	0.0075	\$2,719
Insurances	0.0075	\$2,719
Legal Fees	0.0050	\$0
Land Use, SDC's, Bldg. Permits	0.0300	\$10,875
Project Contingency	0.0300	\$10,875
Project Management	0.0400	\$14,500
Land Cost		\$0

SUBTOTAL >>> \$41,688

TOTAL PROJECT BUDGET >>> \$510,508

BID PACKAGE #10.2 - HIGH DESERT MIDDLE SCHOOL

Project Number: (56) Carpet replacement as needed, VCT in
hallways,(58) Resurface track, (60) Repair asphalt

PROJECT BUDGET

CONSTRUCTION AND EQUIPMENT:

Construction/General Contractor		\$161,894
Construction Contingency	0.1300	\$21,530
Furniture and Equipment (Bond Qualifie	0.0500	\$0
Technology Equipment (Bond Qualified	0.0300	\$0
Off-site Construction Cost (Owner)		\$0

SUBTOTAL >>> \$183,424

PROFESSIONAL SERVICES:

Architect/Engineer	0.1200	\$19,427
Other Professional Services	0.0100	\$1,619
Traffic Study	0.0025	\$0
Site Civil Survey	0.0050	\$0
Geotechnical Investigations	0.0050	\$0
Inspection and Testing	0.0075	\$0
Commissioning Services	0.0200	\$0

SUBTOTAL >>> \$21,046

OWNER COSTS:

Bid Advert./Bid Documents	0.0075	\$1,214
Insurances	0.0075	\$1,214
Legal Fees	0.0050	\$0
Land Use, SDC's, Bldg. Permits	0.0500	\$0
Project Contingency	0.0300	\$4,857
Project Management	0.0400	\$6,476
Land Cost		\$0

SUBTOTAL >>> \$13,761

TOTAL PROJECT BUDGET >>> \$218,231

BID PACKAGE #10.3 - SKY VIEW MIDDLE SCHOOL

Project Number: (77) Parking lot reconfiguration, Repair asphalt, (78)
Operable gym windows for natural cooling, (79)
Fencing at fields, (80) Resurface track and run
ways

PROJECT BUDGET

CONSTRUCTION AND EQUIPMENT:

Construction/General Contractor		\$226,956
Construction Contingency	0.1500	\$33,701
Furniture and Equipment (Bond Qualifie	0.0500	\$0
Technology Equipment (Bond Qualified	0.0300	\$0
Off-site Construction Cost (Owner)		\$0

SUBTOTAL >>> \$260,657

PROFESSIONAL SERVICES:

Architect/Engineer	0.1200	\$27,235
Other Professional Services	0.0100	\$2,270
Traffic Study	0.0025	\$0
Site Civil Survey	0.0080	\$1,816
Geotechnical Investigations	0.0050	\$0
Inspection and Testing	0.0075	\$0
Commissioning Services	0.0200	\$0

SUBTOTAL >>> \$31,320

OWNER COSTS:

Bid Advert./Bid Documents	0.0075	\$1,702
Insurances	0.0075	\$1,702
Legal Fees	0.0050	\$0
Land Use, SDC's, Bldg. Permits	0.0500	\$0
Project Contingency	0.0300	\$6,809
Project Management	0.0400	\$9,078
Land Cost		\$0

SUBTOTAL >>> \$19,292

TOTAL PROJECT BUDGET >>> \$311,269

BID PACKAGE #11 - PILOT BUTTE MIDDLE SCHOOL

Project Number: (68) Replace roof on B & D buildings and locker room, (70) Remodel boys and girls locker rooms, (71) Replace floor covering as needed, (72) Replace and repair siding as necessary, (73) Remodel restrooms, (74) Resurface track, (75) Install snowmelt at building A stairs, (76) Replace stage curtains.

PROJECT BUDGET

CONSTRUCTION AND EQUIPMENT:

Construction/General Contractor		\$1,416,446
Construction Contingency	0.1500	\$218,309
ADA		\$220,489
Furniture and Equipment (Bond Qualifie	0.0500	\$0
Technology Equipment (Bond Qualified	0.0300	\$0
Off-site Construction Cost (Owner)		\$0

SUBTOTAL >>> \$1,855,244

PROFESSIONAL SERVICES:

Architect/Engineer	0.1000	\$141,645
Other Professional Services	0.0300	\$42,493
Traffic Study	0.0025	\$0
Site Civil Survey	0.0080	\$0
Geotechnical Investigations	0.0050	\$0
Inspection and Testing	0.0075	\$10,623
Commissioning Services	0.0200	\$0

SUBTOTAL >>> \$194,761

OWNER COSTS:

Bid Advert./Bid Documents	0.0075	\$10,623
Insurances	0.0075	\$10,623
Legal Fees	0.0050	\$7,082
Land Use, SDC's, Bldg. Permits	0.0500	\$70,822
Project Contingency	0.0300	\$42,493
Project Management	0.0400	\$56,658
Land Cost		\$0

SUBTOTAL >>> \$198,302

TOTAL PROJECT BUDGET >>> \$2,248,307

BID PACKAGE #12 - BEND SENIOR HIGH SCHOOL

Project Number: (81) Paint exterior of building, (82) Art room remodel, (83) Replace exterior single pane windows in A, B & C halls, (84) Replace modular with permanent classrooms, (86) Resurface track, (87) Replace stadium poles and lights, (88) Add soccer field, (89) Remove and replace tennis courts, (90) Reconfigure library

PROJECT BUDGET

CONSTRUCTION AND EQUIPMENT:

Construction/General Contractor		\$3,365,688
Construction Contingency	0.1400	\$468,112
ADA		\$143,000
Furniture and Equipment (Bond Qualifie	0.0500	\$71,500
Technology Equipment (Bond Qualified	0.0300	\$42,900
Off-site Construction Cost (Owner)		\$0

SUBTOTAL >>> \$4,091,200

PROFESSIONAL SERVICES:

Architect/Engineer	0.1000	\$336,569
Other Professional Services	0.0100	\$33,657
Traffic Study	0.0025	\$0
Site Civil Survey	0.0050	\$16,828
Geotechnical Investigations	0.0050	\$16,828
Inspection and Testing	0.0075	\$25,243
Commissioning Services	0.0200	\$0

SUBTOTAL >>> \$429,125

OWNER COSTS:

Bid Advert./Bid Documents	0.0075	\$25,243
Insurances	0.0075	\$25,243
Legal Fees	0.0050	\$0
Land Use, SDC's, Bldg. Permits	0.0500	\$168,284
Project Contingency	0.0300	\$100,971
Project Management	0.0400	\$134,628
Land Cost		\$0

SUBTOTAL >>> \$454,368

TOTAL PROJECT BUDGET >>> \$4,974,693

BID PACKAGE #13 - LA PINE HIGH SCHOOL

Project Number: (91) Remodel existing science labs, (92) Construct soccer field, (93) Upgrade hallways, (94) Replace windows that have broken seals, (95) Resurface track, stabilize asphalt edges, (96) Replace bleachers in main gym, (97) Add DDC system to the remainder of the building, (98) Repair asphalt parking lot, (99) Replace D-wing roof, (100) Replace cove base, (102) Replace stadium poles and lights, (103) Reroof single ply, (104) Cover dumpsters.

PROJECT BUDGET

CONSTRUCTION AND EQUIPMENT:

Construction/General Contractor		\$2,060,986
Construction Contingency	0.1400	\$279,154
ADA		\$180,000
Furniture and Equipment (Bond Qualifie	0.0500	\$36,000
Technology Equipment (Bond Qualified	0.0300	\$0
Off-site Construction Cost (Owner)		\$0

SUBTOTAL >>> \$2,556,140

PROFESSIONAL SERVICES:

Architect/Engineer	0.1200	\$247,318
Other Professional Services	0.0100	\$20,610
Traffic Study	0.0025	\$0
Site Civil Survey	0.0080	\$16,488
Geotechnical Investigations	0.0050	\$0
Inspection and Testing	0.0075	\$15,457
Commissioning Services	0.0200	\$0

SUBTOTAL >>> \$299,873

OWNER COSTS:

Bid Advert./Bid Documents	0.0075	\$15,457
Insurances	0.0075	\$15,457
Legal Fees	0.0050	\$0
Land Use, SDC's, Bldg. Permits	0.0500	\$103,049
Project Contingency	0.0300	\$61,830
Project Management	0.0400	\$82,439
Land Cost		\$0

SUBTOTAL >>> \$278,234

TOTAL PROJECT BUDGET >>> \$3,134,247

BID PACKAGE #14 - MT VIEW HIGH SCHOOL

Project Number: (108) Widen drive at stadium exit to allow left turn lane onto 27th street, remaining side walk replacement, (109) Remove and replace tennis courts, (110) Remodel foods room and second language areas, (111) Replace upper gym balcony gym floor and remodel existing space for exercise room, (112) Replace lighting connections, (113) Repair asphalt parking lot, (114) Replace/repair exterior doors and hardware, (115) Develop athletic field SW corner of site, (116) Provide awning at SW gym exit, (117) Replace windows with broken seals, (118) Upgrade hall lockers, (119) Replace lockers in team rooms and locker rooms, (120) Replace gym floor, (121) replace stadium poles and lights, (122) Replace and reconfigure track.

PROJECT BUDGET

CONSTRUCTION AND EQUIPMENT:

Construction/General Contractor		\$3,036,260
Construction Contingency	0.1500	\$443,488
ADA		\$197,950
Furniture and Equipment (Bond Qualifie	0.0500	\$17,915
Technology Equipment (Bond Qualified	0.0300	\$0
Off-site Construction Cost (Owner)		\$0

SUBTOTAL >>> \$3,695,613

PROFESSIONAL SERVICES:

Architect/Engineer	0.1200	\$364,351
Other Professional Services	0.0100	\$30,363
Traffic Study	0.0025	\$0
Site Civil Survey	0.0080	\$24,290
Geotechnical Investigations	0.0050	\$0
Inspection and Testing	0.0075	\$22,772
Commissioning Services	0.0200	\$0

SUBTOTAL >>> \$441,776

OWNER COSTS:

Bid Advert./Bid Documents	0.0075	\$22,772
Insurances	0.0075	\$22,772
Legal Fees	0.0050	\$0
Land Use, SDC's, Bldg. Permits	0.0500	\$151,813
Project Contingency	0.0300	\$91,088
Project Management	0.0400	\$121,450
Land Cost		\$0

SUBTOTAL >>> \$409,895

TOTAL PROJECT BUDGET >>> \$4,547,284

BID PACKAGE #15 - SUMMIT HIGH SCHOOL

Project Number: (124) Expand shop area, (125) Seal auditorium split
faced block, (126) Additional storage addition.

PROJECT BUDGET

CONSTRUCTION AND EQUIPMENT:

Construction/General Contractor		\$761,340
Construction Contingency	0.1500	\$112,298
ADA		\$73,884
Furniture and Equipment (Bond Qualifie	0.0500	\$36,942
Technology Equipment (Bond Qualified	0.0300	\$0
Off-site Construction Cost (Owner)		\$0

SUBTOTAL >>> \$984,464

PROFESSIONAL SERVICES:

Architect/Engineer	0.1200	\$91,361
Other Professional Services	0.0100	\$7,613
Traffic Study	0.0025	\$0
Site Civil Survey	0.0050	\$3,807
Geotechnical Investigations	0.0050	\$3,807
Inspection and Testing	0.0075	\$5,710
Commissioning Services	0.0200	\$0

SUBTOTAL >>> \$112,298

OWNER COSTS:

Bid Advert./Bid Documents	0.0075	\$5,710
Insurances	0.0075	\$5,710
Legal Fees	0.0050	\$0
Land Use, SDC's, Bldg. Permits	0.0500	\$38,067
Project Contingency	0.0300	\$22,840
Project Management	0.0400	\$30,454
Land Cost		\$0

SUBTOTAL >>> \$102,781

TOTAL PROJECT BUDGET >>> \$1,199,542

BID PACKAGE #16.1 - MARSHALL HIGH SCHOOL

Project Number: (105) Repair asphalt parking lot, (106) Reroof older classroom wing, (107) Replace doors/windows in older classroom wing

PROJECT BUDGET

CONSTRUCTION AND EQUIPMENT:

Construction/General Contractor		\$115,597
Construction Contingency	0.1500	\$18,207
Furniture and Equipment (Bond Qualifie	0.0500	\$0
Technology Equipment (Bond Qualified	0.0300	\$0
Off-site Construction Cost (Owner)		\$0

SUBTOTAL >>> \$133,804

PROFESSIONAL SERVICES:

Architect/Engineer	0.1200	\$13,872
Other Professional Services	0.0100	\$1,156
Traffic Study	0.0025	\$0
Site Civil Survey	0.0050	\$0
Geotechnical Investigations	0.0050	\$0
Inspection and Testing	0.0075	\$867
Commissioning Services	0.0200	\$0

SUBTOTAL >>> \$15,895

OWNER COSTS:

Bid Advert./Bid Documents	0.0075	\$867
Insurances	0.0075	\$867
Legal Fees	0.0050	\$0
Land Use, SDC's, Bldg. Permits	0.0500	\$5,780
Project Contingency	0.0300	\$3,468
Project Management	0.0400	\$4,624
Land Cost		\$0

SUBTOTAL >>> \$15,606

TOTAL PROJECT BUDGET >>> \$165,304

BID PACKAGE #16.2 - DISTRIBUTION CENTER

Project Number: (127) Replace overhead doors and dock curtains,
(128) Replace warehouse roof

PROJECT BUDGET

CONSTRUCTION AND EQUIPMENT:

Construction/General Contractor		\$265,740
Construction Contingency	0.1500	\$41,854
Furniture and Equipment (Bond Qualifie	0.0500	\$0
Technology Equipment (Bond Qualified	0.0300	\$0
Off-site Construction Cost (Owner)		\$0

SUBTOTAL >>> \$307,594

PROFESSIONAL SERVICES:

Architect/Engineer	0.1200	\$31,889
Other Professional Services	0.0100	\$2,657
Traffic Study	0.0025	\$0
Site Civil Survey	0.0050	\$0
Geotechnical Investigations	0.0050	\$0
Inspection and Testing	0.0075	\$1,993
Commissioning Services	0.0200	\$0

SUBTOTAL >>> \$36,539

OWNER COSTS:

Bid Advert./Bid Documents	0.0075	\$1,993
Insurances	0.0075	\$1,993
Legal Fees	0.0050	\$0
Land Use, SDC's, Bldg. Permits	0.0500	\$13,287
Project Contingency	0.0300	\$7,972
Project Management	0.0400	\$10,630
Land Cost		\$0

SUBTOTAL >>> \$35,875

TOTAL PROJECT BUDGET >>> \$380,008

BID PACKAGE #17 - EDUCATION CENTER

Project Number: (129) New boilers, Upgrade electrical service,
Boiler/data/storage outbuilding, Remove replace
south parking lot

PROJECT BUDGET

CONSTRUCTION AND EQUIPMENT:

Construction/General Contractor		\$1,863,500
Construction Contingency	0.1500	\$284,184
ADA		\$186,350
Furniture and Equipment (Bond Qualifie	0.0500	\$0
Technology Equipment (Bond Qualified	0.0300	\$55,905
Off-site Construction Cost (Owner)		\$0

SUBTOTAL >>> \$2,389,939

PROFESSIONAL SERVICES:

Architect/Engineer	0.1200	\$223,620
Other Professional Services	0.0300	\$55,905
Traffic Study	0.0025	\$0
Site Civil Survey	0.0050	\$9,318
Geotechnical Investigations	0.0050	\$0
Inspection and Testing	0.0075	\$13,976
Commissioning Services	0.0200	\$0

SUBTOTAL >>> \$302,819

OWNER COSTS:

Bid Advert./Bid Documents	0.0075	\$13,976
Insurances	0.0075	\$13,976
Legal Fees	0.0050	\$0
Land Use, SDC's, Bldg. Permits	0.0500	\$93,175
Project Contingency	0.0300	\$55,905
Project Management	0.0400	\$74,540
Land Cost		\$0

SUBTOTAL >>> \$251,573

TOTAL PROJECT BUDGET >>> \$2,944,330

BID PACKAGE #18 - BEND TRANSPORTATION

Project Number: (134) Add two work bays to south side of shop to include two additional bus lifts, Plumbing replacement and electrical upgrade, (135) Provide permanent transportation administrative offices to include asphalt parking lot expansion and finishing site light upgrade.

PROJECT BUDGET

CONSTRUCTION AND EQUIPMENT:

Construction/General Contractor		\$1,420,200
Construction Contingency	0.1500	\$209,478
Furniture and Equipment (Bond Qualifie	0.0500	\$53,552
Technology Equipment (Bond Qualified	0.0300	\$32,131
Off-site Construction Cost (Owner)		\$250,000

SUBTOTAL >>> \$1,965,361

PROFESSIONAL SERVICES:

Architect/Engineer	0.1200	\$170,424
Other Professional Services	0.0100	\$14,202
Traffic Study	0.0025	\$0
Site Civil Survey	0.0050	\$7,101
Geotechnical Investigations	0.0050	\$7,101
Inspection and Testing	0.0075	\$10,652
Commissioning Services	0.0200	\$0

SUBTOTAL >>> \$209,480

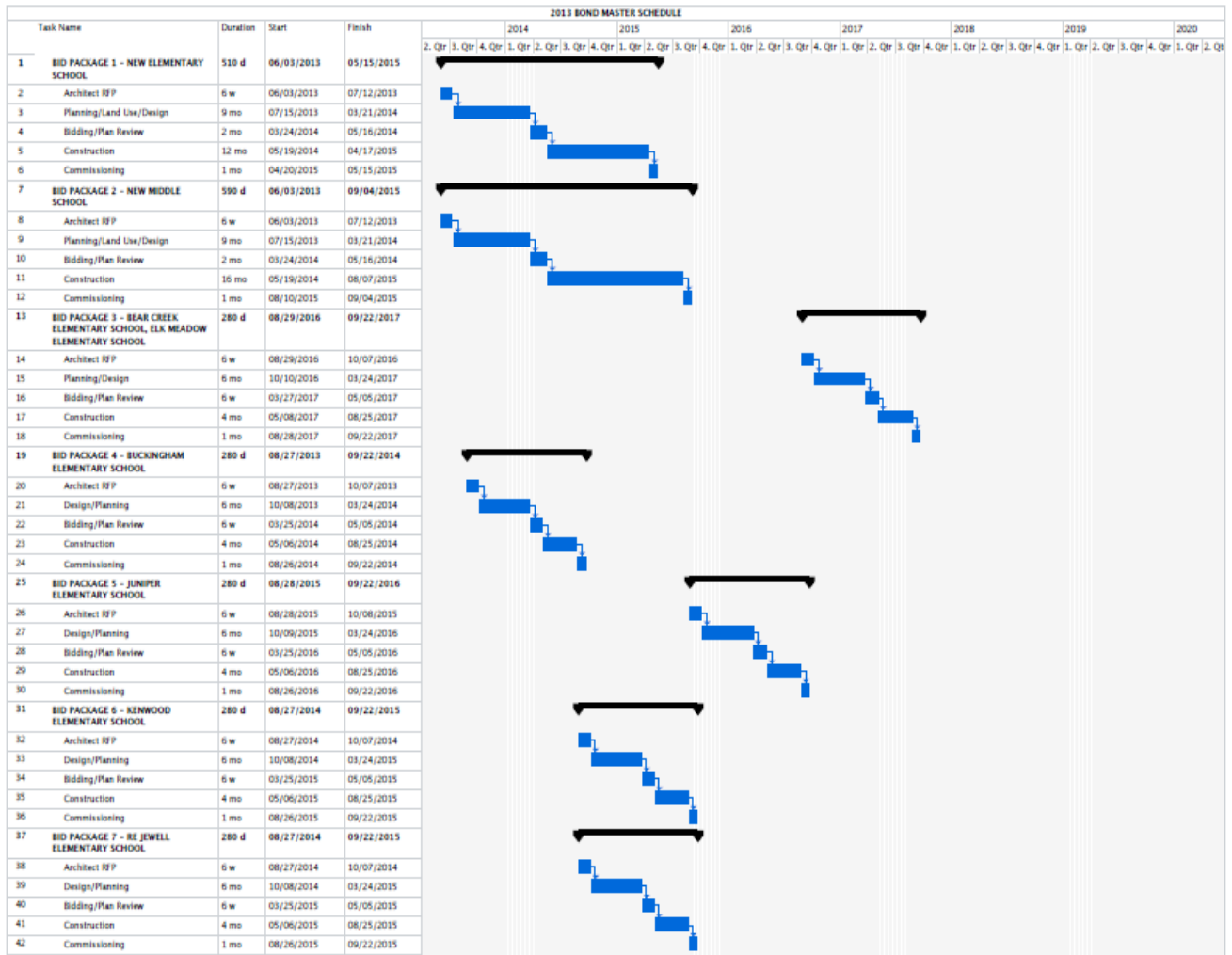
OWNER COSTS:

Bid Advert./Bid Documents	0.0075	\$10,652
Insurances	0.0075	\$10,652
Legal Fees	0.0050	\$0
Land Use, SDC's, Bldg. Permits	0.0500	\$71,010
Project Contingency	0.0300	\$42,606
Project Management	0.0400	\$56,808
Land Cost		\$0

SUBTOTAL >>> \$191,727

TOTAL PROJECT BUDGET >>> \$2,366,568

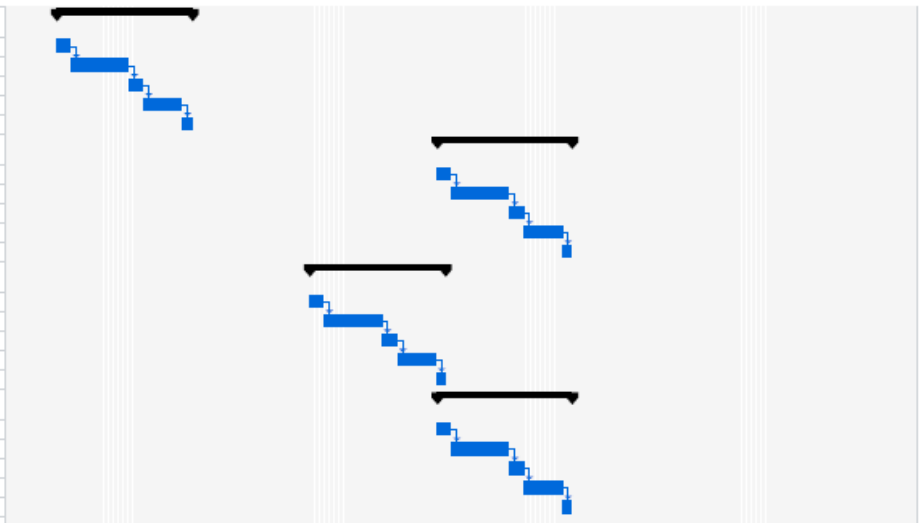
BID PACKAGE SCHEDULES



43				
44	BID PACKAGE 8 – THOMPSON ELEMENTARY SCHOOL	280 d	08/28/2015	09/22/2016
45	Architect RFP	6 w	08/28/2015	10/08/2015
46	Design/Planning	6 mo	10/09/2015	03/24/2016
47	Bidding/Plan Review	6 w	03/25/2016	05/05/2016
48	Construction	4 mo	05/06/2016	08/25/2016
49	Commissioning	1 mo	08/26/2016	09/22/2016
50	BID PACKAGE 9 – LA PINE ELEMENTARY SCHOOL, LA PINE MIDDLE SCHOOL	280 d	08/28/2015	09/22/2016
51	Architect RFP	6 w	08/28/2015	10/08/2015
52	Design/Planning	6 mo	10/09/2015	03/24/2016
53	Bidding/Plan Review	6 w	03/25/2016	05/05/2016
54	Construction	4 mo	05/06/2016	08/25/2016
55	Commissioning	1 mo	08/26/2016	09/22/2016
56	BID PACKAGE 10 – CASCADE MIDDLE SCHOOL, HIGH DESERT MIDDLE SCHOOL, SKY VIEW MIDDLE SCHOOL	280 d	08/29/2016	09/22/2017
57	Architect RFP	6 w	08/29/2016	10/07/2016
58	Design/Planning	6 mo	10/10/2016	03/24/2017
59	Bidding/Plan Review	6 w	03/27/2017	05/05/2017
60	Construction	4 mo	05/08/2017	08/25/2017
61	Commissioning	1 mo	08/28/2017	09/22/2017
62	BID PACKAGE 11 – PILOT BUTTE MIDDLE SCHOOL	280 d	08/28/2015	09/22/2016
63	Architect RFP	6 w	08/28/2015	10/08/2015
64	Design/Planning	6 mo	10/09/2015	03/24/2016
65	Bidding/Plan Review	6 w	03/25/2016	05/05/2016
66	Construction	4 mo	05/06/2016	08/25/2016
67	Commissioning	1 mo	08/26/2016	09/22/2016
68	BID PACKAGE 12 – BEND SENIOR HIGH SCHOOL	280 d	08/27/2014	09/22/2015
69	Architect RFP	6 w	08/27/2014	10/07/2014
70	Design/Planning	6 mo	10/08/2014	03/24/2015
71	Bidding/Plan Review	6 w	03/25/2015	05/05/2015
72	Construction	4 mo	05/06/2015	08/25/2015
73	Commissioning	1 mo	08/26/2015	09/22/2015
74	BID PACKAGE 13 – LA PINE HIGH SCHOOL	280 d	08/27/2014	09/22/2015
75	Architect RFP	6 w	08/27/2014	10/07/2014
76	Design/Planning	6 mo	10/08/2014	03/24/2015
77	Bidding/Plan Review	6 w	03/25/2015	05/05/2015
78	Construction	4 mo	05/06/2015	08/25/2015
79	Commissioning	1 mo	08/26/2015	09/22/2015
80	BID PACKAGE 14 – MT VIEW HIGH SCHOOL	280 d	08/27/2013	09/22/2014
81	Architect RFP	6 w	08/27/2013	10/07/2013
82	Design/Planning	6 mo	10/08/2013	03/24/2014
83	Bidding/Plan Review	6 w	03/25/2014	05/05/2014
84	Construction	4 mo	05/06/2014	08/25/2014
85	Commissioning	1 mo	08/26/2014	09/22/2014
86				



87	BID PACKAGE 15 – SUMMIT HIGH SCHOOL	280 d	08/27/2013	09/22/2014
88	Architect RFP	6 w	08/27/2013	10/07/2013
89	Design/Planning	6 mo	10/08/2013	03/24/2014
90	Bidding/Plan Review	6 w	03/25/2014	05/05/2014
91	Construction	4 mo	05/06/2014	08/25/2014
92	Commissioning	1 mo	08/26/2014	09/22/2014
93	BID PACKAGE 16 – MARSHALL HIGH SCHOOL, DISTRIBUTION CENTER	280 d	08/29/2016	09/22/2017
94	Architect RFP	6 w	08/29/2016	10/07/2016
95	Design/Planning	6 mo	10/10/2016	03/24/2017
96	Bidding/Plan Review	6 w	03/27/2017	05/05/2017
97	Construction	4 mo	05/08/2017	08/25/2017
98	Commissioning	1 mo	08/28/2017	09/22/2017
99	BID PACKAGE 17 – EDUCATION CENTER	280 d	08/28/2015	09/22/2016
100	Architect RFP	6 w	08/28/2015	10/08/2015
101	Design/Planning	6 mo	10/09/2015	03/24/2016
102	Bidding/Plan Review	6 w	03/25/2016	05/05/2016
103	Construction	4 mo	05/06/2016	08/25/2016
104	Commissioning	1 mo	08/26/2016	09/22/2016
105	BID PACKAGE 18 – BEND TRANSPORTATION	280 d	08/29/2016	09/22/2017
106	Architect RFP	6 w	08/29/2016	10/07/2016
107	Design/Planning	6 mo	10/10/2016	03/24/2017
108	Bidding/Plan Review	6 w	03/27/2017	05/05/2017
109	Construction	4 mo	05/08/2017	08/25/2017
110	Commissioning	1 mo	08/28/2017	09/22/2017



OTHER BOND PROJECTS

Includes other bond projects that have been identified, but not assigned to a bid package or schedule as the date of publishing of this Management Plan. These projects may be assigned to identified bid packages or bid separately depending on the best option to the District.

The following types of projects are identified on the following pages:

OTHER BOND PROJECTS	\$254,232
TECHNOLOGY PROJECTS	\$4,062,000
UPGRADE DUCTWORK PROJECTS	\$340,083
MAINTENANCE PROJECTS	\$1,800,455

TOTAL = \$6,456,770

OTHER BOND PROJECTS

PROJECT NUMBER	BUILDING SITE	PROJECT DESCRIPTION	BUDGET
15	Ensworth ES	Replace grass with asphalt on the north side	\$31,394
33	Lava Ridge ES	Replace cabinet doors in classrooms	\$38,343
36	Pine Ridge ES	Acoustical treatment in main office entry	\$9,495
47	Three Rivers K-8	Provide defined space for music program	\$175,000
TOTAL >>>			\$254,232

DISTRICT TECHNOLOGY BOND PROJECTS

PROJECT NUMBER	BUILDING SITE	PROJECT DESCRIPTION	BUDGET
136		District wide technology improvements - Cabling, Paging & Bells, Time Systems, Security & Access	\$4,062,000
		TOTAL >>>	\$4,062,000

UPGRADE DUCTWORK BOND PROJECTS

PROJECT NUMBER	BUILDING SITE	PROJECT DESCRIPTION	BUDGET
2	Bear Creek ES	Upgrade ductwork	\$20,000
7	Buckingham ES	Upgrade ductwork	\$21,848
41	Jewell ES	Upgrade ductwork	\$18,196
52	Cascade MS	Upgrade ductwork	\$85,544
59	High Desert MS	Upgrade ductwork	\$37,323
69	Pilot Butte MS	Upgrade ductwork	\$107,612
101	La Pine HS	Upgrade ductwork	\$49,560
TOTAL >>>			\$340,083

MAINTENANCE BOND PROJECTS

PROJECT			
NUMBER	BUILDING SITE	PROJECT DESCRIPTION	BUDGET
4	Buckingham ES	Replace removable walls with permanent walls	\$75,000
12	Elk Meadow ES	Convert HVAC controls to DDC	\$357,500
14	Elk Meadow ES	Replace T-12 light ballasts with T-8	\$52,510
16	High Lakes ES	Repair/Renovate east playground	\$17,696
28	La Pine ES	Add DDC system to heating controls	\$357,500
29	La Pine ES	Upgrade exterior lighting to CCI	\$8,580
30	La Pine ES	Replace T-12 light ballasts with T-8	\$52,510
34	Lava Ridge ES	Replace T-12 light ballasts with T-8	\$52,510
35	Pine Ridge ES	Install weather track irrigation controllers	\$14,300
57	High Desert MS	Replace T-12 light ballasts with T-8	\$52,510
67	La Pine MS	Reroof main and aux gym	\$137,589
85	Bend Senior HS	Baseball field irrigation replacement	\$15,000
123	Mountain View HS	Stadium restroom improvements	\$107,250
137	District Wide	Drainage repair to support WFPC	\$500,000
TOTAL >>>			\$1,800,455

CAPITAL IMPROVEMENTS PROJECTS MASTER LIST

JOB #	FACILITY	PROJECT TITLE	RECOMMENDED PROJECTS
BEAR CREEK ELEMENTARY			
1	Bear Creek ES	Replace exterior siding	\$ 132,597
2	Bear Creek ES	Update controls and ductwork	20,000
3	Bear Creek ES	Replace single pane windows	187,330
Total Bear Creek Elementary			\$ 339,927
BUCKINGHAM ELEMENTARY			
4	Buckingham ES	Replace removable walls with permanent walls	\$ 75,000
5	Buckingham ES	Safety improvements at main office and main entrance	1,489,250
6	Buckingham ES	Replace gym floor	71,042
7	Buckingham ES	Upgrade HVAC ductwork	21,848
8	Buckingham ES	Replace driveway and parking asphalt	69,578
9	Buckingham ES	Remodel restrooms	60,017
Total Buckingham Elementary			\$ 1,786,735
ELK MEADOW ELEMENTARY			
10	Elk Meadow ES	Provide additional space for instructional materials	\$ 30,245
11	Elk Meadow ES	Renovate north play field	321,566
12	Elk Meadow ES	Convert HVAC controls	357,500
13	Elk Meadow ES	Replace driveway and parking asphalt	42,135
14	Elk Meadow ES	Upgrade lighting	52,510
Total Elk Meadow Elementary			\$ 803,956
ENSWORTH ELEMENTARY			
15	Ensworth ES	Replace grass with asphalt on north side	\$ 31,394
HIGH LAKES ELEMENTARY			
16	High Lakes ES	Renovate east playground	\$ 17,696
JUNIPER ELEMENTARY			
17	Juniper ES	Campus security fencing	\$ 32,278
18	Juniper ES	Replace boiler system, update controls and ductwork	493,350
19	Juniper ES	Replace siding	170,320
20	Juniper ES	Replace asphalt paving at parking	305,938
21	Juniper ES	Replace single pane windows	208,065
22	Juniper ES	Replace building E roof	150,093
23	Juniper ES	Replace gym floor	71,042
Total Juniper Elementary			\$ 1,431,086
KENWOOD ELEMENTARY			
24	Kenwood ES	Replace parking and playground asphalt	\$ 165,000
25	Kenwood ES	Replace security fence	61,726
26	Kenwood ES	Interior renovation of all instructional spaces	3,703,529
Total Kenwood Elementary			\$ 3,930,255
LA PINE ELEMENTARY			
27	La Pine ES	Replace parking lot asphalt	\$ 13,974
28	La Pine ES	Add direct digital control system to heating controls	357,500
29	La Pine ES	Upgrade exterior lighting	8,580
30	La Pine ES	Upgrade interior lighting	52,510
31	La Pine ES	Replace playground asphalt	46,595
32	La Pine ES	Improve instructional space in media center	22,880
Total La Pine Elementary			\$ 502,039

JOB #	FACILITY	PROJECT TITLE	RECOMMENDED PROJECTS
LAVA RIDGE ELEMENTARY			
33	Lava Ridge ES	Replace cabinet doors in classrooms	\$ 38,343
34	Lava Ridge ES	Upgrade lighting	52,510
Total Lava Ridge Elementary			\$ 90,853
PINE RIDGE ELEMENTARY			
35	Pine Ridge ES	Install irrigation controllers	\$ 14,300
36	Pine Ridge ES	Acoustical treatment in main office entry	9,495
Total Pine Ridge Elementary			\$ 23,795
RE JEWELL ELEMENTARY			
37	RE Jewell ES	Renovate all restrooms	\$ 213,735
38	RE Jewell ES	Renovate locker rooms to provide restrooms and life skills shower	564,685
39	RE Jewell ES	Regrade north playgrounds	140,159
40	RE Jewell ES	Security fencing on north playground	58,559
41	RE Jewell ES	Upgrade HVAC ductwork	18,196
Total RE Jewell Elementary			\$ 995,334
THOMPSON ELEMENTARY			
42	Thompson ES	Replace original boiler system and update mechanical controls	\$ 721,799
43	Thompson ES	Replace all windows	343,736
44	Thompson ES	Replace exterior and gym doors	45,424
45	Thompson ES	Upgrade/add restrooms	151,301
46	Thompson ES	Add fire sprinkler system	71,500
Total Thompson Elementary			\$ 1,333,760
THREE RIVERS ELEMENTARY AND MIDDLE			
47	Three Rivers K-8	Instructional music area renovation	\$ 175,000
CASCADE MIDDLE SCHOOL			
48	Cascade MS	New bleachers in main gym	\$ 150,150
49	Cascade MS	Remove temporary classrooms	43,350
50	Cascade MS	Correct erosion at north side of track	121,200
51	Cascade MS	Replace cafeteria table system	37,323
52	Cascade MS	Upgrade HVAC ductwork	85,544
53	Cascade MS	Replace outside basketball court	75,588
54	Cascade MS	Remove and replace south soffit and lights	27,742
55	Cascade MS	Add bleachers in auxiliary gym	55,155
Total Cascade Middle School			\$ 596,052
HIGH DESERT MIDDLE SCHOOL			
56	High Desert MS	Flooring replacement	\$ 51,875
57	High Desert MS	Upgrade lighting	52,510
58	High Desert MS	Replace track surface	113,300
59	High Desert MS	Upgrade HVAC ductwork	37,323
60	High Desert MS	Replace asphalt	53,056
Total High Desert Middle School			\$ 308,064
LA PINE MIDDLE SCHOOL			
61	La Pine MS	Remodel restrooms	\$ 726,619
62	La Pine MS	Add paving at rear of school, widen west drive	223,093
63	La Pine MS	Replace classroom floor coverings	263,006
64	La Pine MS	Replace baseboards throughout school	29,601
65	La Pine MS	Install heated sidewalk at school entry	23,326
66	La Pine MS	Replace gym bleachers	150,150
67	La Pine MS	Replace main and auxiliary gym roofs	137,589
Total La Pine Middle School			\$ 1,553,384

JOB #	FACILITY	PROJECT TITLE	RECOMMENDED PROJECTS
PILOT BUTTE MIDDLE SCHOOL			
68	Pilot Butte MS	Replace roofing system on B & D buildings and locker room	\$ 427,570
69	Pilot Butte MS	Upgrade HVAC ductwork	107,612
70	Pilot Butte MS	Renovate boys and girls locker rooms	888,003
71	Pilot Butte MS	Replace floor coverings	20,582
72	Pilot Butte MS	Replace worn siding	89,492
73	Pilot Butte MS	Renovate restrooms	609,260
74	Pilot Butte MS	Replace track surface	113,300
75	Pilot Butte MS	Install heated sidewalk at building A stairs	71,500
76	Pilot Butte MS	Replace stage curtains	28,600
Total Pilot Butte Middle School			\$ 2,355,919
SKYVIEW MIDDLE SCHOOL			
77	Skyview MS	Parking lot reconfiguration	\$ 121,550
78	Skyview MS	Replace windows with operable gym windows for natural cooling	30,087
79	Skyview MS	Install security fencing	46,332
80	Skyview MS	Replace track surface	113,300
Total Skyview Middle School			\$ 311,269
BEND SENIOR HIGH			
81	Bend Senior HS	Renovate building exterior	\$ 214,500
82	Bend Senior HS	Art classroom renovation	250,250
83	Bend Senior HS	Replace exterior single pane windows in A, B & C halls	358,930
84	Bend Senior HS	Replace temporary classrooms with permanent classrooms	2,230,800
85	Bend Senior HS	Baseball field irrigation replacement	15,000
86	Bend Senior HS	Replace track surface	206,000
87	Bend Senior HS	Replace stadium poles and lights	257,400
88	Bend Senior HS	Construct multi-use physical education and athletics field, support facility	1,156,513
89	Bend Senior HS	Renovate tennis courts	143,000
90	Bend Senior HS	Media center renovation	157,300
Total Bend Senior High School			\$ 4,989,693
LA PINE HIGH			
91	La Pine HS	Science classroom renovation	\$ 1,260,000
92	La Pine HS	Construct physical education and athletics field	231,660
93	La Pine HS	Renovate hallways	54,994
94	La Pine HS	Replace windows	47,619
95	La Pine HS	Replace track surface	206,000
96	La Pine HS	Replace bleachers in main gym	300,300
97	La Pine HS	Add direct digital control system	164,020
98	La Pine HS	Replace asphalt	119,163
99	La Pine HS	Replace D-Wing roof	75,790
100	La Pine HS	Replace baseboards	18,331
101	La Pine HS	Upgrade HVAC ductwork	49,560
102	La Pine HS	Replace stadium poles and lights	257,400
103	La Pine HS	Replace roof	378,950
104	La Pine HS	Secure dumpsters	20,020
Total La Pine High School			\$ 3,183,807
MARSHALL HIGH			
105	Marshall HS	Repair asphalt	\$ 10,117
106	Marshall HS	Reroof classroom wing	114,400
107	Marshall HS	Replace doors/windows in classroom wing	40,786
Total Marshall High School			\$ 165,303

JOB #	FACILITY	PROJECT TITLE	RECOMMENDED PROJECTS
MOUNTAIN VIEW HIGH			
108	Mountain View HS	Widen drive at stadium exit to allow left turn lane onto 27th Street, sidewalk improvements	\$ 35,288
109	Mountain View HS	Resurface existing tennis courts	143,000
110	Mountain View HS	Renovate foods and second language instructional spaces	630,608
111	Mountain View HS	Replace upper gym floor and renovate existing space for physical education instruction	741,285
112	Mountain View HS	Replace lighting	33,925
113	Mountain View HS	Replace asphalt	118,843
114	Mountain View HS	Replace exterior doors	71,500
115	Mountain View HS	Develop athletic field (SW corner of site)	250,000
116	Mountain View HS	Provide awning at SW gym exit	21,450
117	Mountain View HS	Replace windows	90,233
118	Mountain View HS	Upgrade hall lockers	5,148
119	Mountain View HS	Replace lockers in team rooms and locker rooms	185,522
120	Mountain View HS	Replace gym floor	202,581
121	Mountain View HS	Replace stadium poles and lights	230,400
122	Mountain View HS	Upgrade athletic fields and track facilities	1,787,500
123	Mountain View HS	Stadium restroom improvement	107,250
Total Mountain View High School			\$ 4,654,533
SUMMIT HIGH			
124	Summit HS	Expand manufacturing and technology instructional space	\$ 807,127
125	Summit HS	Seal auditorium split face block	32,175
126	Summit HS	Create athletics and activities storage area	360,240
Total Summit High School			\$ 1,199,542
DISTRIBUTION CENTER			
127	Distribution Center	Replace overhead doors and dock curtains	\$ 22,508
128	Distribution Center	Replace warehouse roof	357,500
Total Distribution Center			\$ 380,008
EDUCATION CENTER			
129	Education Center	Electrical improvements, new boiler and add data center	\$ 2,944,330
NUTRITION SERVICES			
130	Nutrition Services	Remodel/expansion of Bear Creek ES kitchen	\$ 121,808
131	Nutrition Services	Remodel/expansion of Juniper ES kitchen	179,653
132	Nutrition Services	Remodel/expansion of Kenwood ES kitchen	148,770
133	Nutrition Services	Expansion of Thompson ES kitchen serving area, storage for cafeteria tables	360,468
Total Nutrition Services			\$ 810,699
BEND TRANSPORTATION			
134	Bend Transportation	Add two work bays to south side of shop to include two additional bus lifts, plumbing replacement and electrical upgrade	\$ 499,313
135	Bend Transportation	Remove Quonset huts and replace with permanent facility, add parking for bus fleet	1,867,255
Total Bend Transportation			\$ 2,366,568
DISTRICT-WIDE			
136	District-Wide	Technology infrastructure	\$ 4,062,000
137	District-Wide	Drainage repair to support WFPC	500,000
138	District-Wide	Land Acquisition (New Elementary Site)	2,250,000
Total District-wide			\$ 6,812,000
NEW CAPACITY			
139	New Middle School		\$ 36,879,000
140	New Elementary School		15,036,200
Total New Capacity			\$ 51,915,200
TOTAL ALL PROJECTS			\$ 96,008,201

GLOSSARY OF TERMS

New Construction:	Actual construction costs for new building construction, including site package bids, general construction package bids.
Renovation Construction:	Actual construction costs for renovation work, including remodel of existing buildings and mechanical/electrical upgrade bid packages
Construction Contingency:	Change orders during construction to the contracts noted above. This amount is based on historical cost information and is typical for all construction projects.
Furniture and Equipment:	Fixed equipment necessary for the proper opening of school. This includes desks, chairs, file cabinets, tables, but does not include books, instructional materials, office supplies, etc. Computers, peripherals, software and other equipment not permanently incorporated into the network configuration at the schools is not accounted for in this line item budget.
Architect/Engineer:	Design service fees, based on previously negotiated lump sum contracts, and paid over time according to a previously agreed to distribution. This includes the architect and all the design subconsultants retained by the architects necessary to complete the design drawings and specifications.
Educational Specifications:	Through visioning processes, staff interviews and feedback sessions, incorporating community concern and comment, and providing recommended guidelines, the Program of Requirements (Educational Specification) are created. The Architect will provide this service under their contracts. In other situations, a separate consultant is retained to provide this Educational Specification, which is then made as a basis for the architect's contract, for the architect to use as a guideline to design towards.
Traffic Study:	Recent changes to the Planning Codes may require a Traffic Impact Study in some areas. This is particularly noted in the City of Bend. This provides a basis for the determination of required road improvements or development adjacent to the site to manage the increased traffic load in a way that does not adversely impact the surrounding neighborhood. A separate consultant will be retained to complete any Traffic Impact Studies.
Site Civil Survey:	Boundary, topographical, and prominent features must be determined at each site prior to beginning Site Design. A separate consultant will be retained to complete this required

surveying. This information is then provided to the architects for their use in design.

Geotechnical Investigations:

Surface features, subsurface soil conditions, and design information is obtained by a geotechnical investigation firm for the sole use of the design consultant. This investigation is also required by code, with a seismic site survey included to be provided with the Building Permit Submittal. Information obtained include recommendations for site and building drainage, road and sidewalk design recommendations, and building slab and foundation design recommendations. This service will be retained by a separate consultant.

Inspection and Testing:

Review and non-destructive testing of structural components such as building pad, base rock material, foundation formwork, reinforcing/concrete placement, laboratory testing of concrete samples from each concrete pour, and any other special inspections required by code.

Bid Advert/Bid Documents:

Legal advertisements in the Daily Journal of Commerce, the Bend Bulletin and any other publications necessary to adequately advertise critical information relative to the project bid requirements. Printing and distribution of the Bid Documents, as well as any Bid Period clarifications (addenda).

Insurances:

Course of Construction, or Builders Risk, insurance is purchased for the project to cover any damage, theft, vandalism, etc. which might occur to the property. This insurance is for the benefit of the District and does not cover the contractor's losses, other than major equipment loss.

Legal Fees:

Attorney's fees for land use issues (Burden of Proof Statements), advice during land use process, Construction Document Review (General Conditions of the Construction Contract), and advice during construction with respect to potentially contentious or litigious issues.

Land Use, SDC's, Bldg Permits:

Application costs for Land Use Applications, Payment of Systems Development Charges, Payment for Building Permits, and up-front costs for utility service agreements.

Bond Issuance Costs:

Bond Premium and underwriting costs incurred at the time of the sale of the bonds.

Project Contingency:

Covers unexpected costs during both design and construction which are Owner related and not a part of the physical construction of the building.

Design Team Review:

Owner staff costs attributable to the furtherance of the project design and construction.

Project Management:

Construction project management salaries and fees, to provide for managing the design, bid, and construction processes for the

District, providing methods for cost and schedule control, under the direction of the Facilities Development Office during the Construction Program.

Land Acquisition:

Purchase of land to accommodate the new buildings. Includes any other related costs such as attorney fees, title fees, etc. required by the land acquisition.