

Bend-La Pine Schools

# **Family Handbook & Calendar 25-26**





# Welcome to Bend-La Pine Schools



Greetings and welcome to the 2025-26 school year in Bend-La Pine Schools!

It is my honor to serve as your Superintendent in partnership with 33 school communities with over 16,000 students and 2,000 staff members. We aspire to provide an environment where every student and employee can thrive in our District.

We, your leadership team, continue to implement the vision and goals set by our elected Board of Directors. These encompass our dedication to providing a strong academic foundation for students; ensuring that our students, families and staff experience wellness, inclusivity and belonging in our schools; and creating systems so that students find their passion, purpose and plan for their future.

Learning is at the center of everything we do. We strive to help our youngest learners learn to read and develop essential language skills, unlock the wonders of science and math, and guide older students in discovering the technical skills and knowledge that pave the way for future careers. Our devoted staff members uphold high expectations for our students, all while deeply caring for their individual well-being.

We build strong connections and relationships with our students, nurturing their sense of belonging within our school communities. We endeavor to develop the whole child, promoting dignity, empathy, kindness and support for others, while fostering curiosity about their world and assisting all students in realizing their full potential as they navigate their journey to find their passions and purpose.

We've revamped this year's Family Handbook & Calendar to make it more useful as a guide for the start of the school year and a resource for milestones throughout the year. I invite you to flip through these pages to see what's new, and to enjoy the 12 students selected to represent our schools in the calendar pages. Also, check out the new "what to know" monthly tips following the calendar pages.

Our schools play a vital role in creating and nurturing learning environments that inspire and support students in pursuit of their dreams. The involvement of our families and communities makes this possible. Thank you for helping us achieve our goals!

**Dr. Steven Cook**

Bend-La Pine Schools  
Superintendent



**B E N D  
LA PINE  
S C H O O L S**

## Board of Directors

The Bend-La Pine Schools Board of Directors typically meets on the second and fourth Tuesday of each month. Business meetings are typically held on the second Tuesday of each month, while work sessions typically take place on the fourth Tuesday of each month. Meetings are held at 5:30 p.m. at the Education Center, 520 NW Wall Street, Bend, Oregon, in Room 314, unless otherwise noted.

Board meetings, except Executive Session, are open to the public. Business meetings are a time in which regular business is completed, actions are taken, and public comment is received. Work Sessions are a time for the Board to engage in discussion on key Board work initiatives. All meetings are live streamed on the School Board YouTube channel. Meeting schedules, agendas and minutes of previous meetings are posted on our district website.



Top row from left: Marcus LeGrand, Shirley Olson, Ross Tomlin, Jenn Lynch. Bottom row from left: Cameron Fischer, Kina Chadwick, Amy Tatom.

## POLICY GOVERNANCE

The Bend-La Pine Schools Board of Directors is focused on policies promoting student achievement and creating outstanding schools. With that aim, the board is using a policy governance model to target specific results or "ends." The board members are focused on broad goals — including what Bend-La Pine Schools graduates should know and be able to do.

The board members communicate their overall goals and what they expect to be accomplished to the superintendent. How these "ends" are achieved is left up to the district's professional staff. By delegating and directing the superintendent, the board is able to focus on more broad issues while evaluating the end results.

# MISSION *and* BELIEFS

## Educating Thriving Students

Public education is the foundation of a thriving democracy, molding our collective future. We commit to providing the absolute best teaching and learning possible to our students. This means understanding quality teaching and the ways students learn best. It also means deeply knowing each student and tailoring instruction to meet their needs.

### OUR PROMISE

Every student in Bend-La Pine Schools is known by name, strengths, and needs, and graduates ready for college, career and community engagement.

### OUR GOALS

- Students are engaged and develop a strong academic foundation
- Students have a passion, purpose, and plan for their future
- Students, families, and staff experience wellness, inclusion, and belonging in our schools
- Operational systems align and support an academically effective and sustainable organization

### OUR COMMITMENT TO STUDENTS & FAMILIES

Staff will continue to develop the knowledge, skills and dispositions that promote high levels of learning for all students, and which create environments where all students and families feel valued and welcomed, particularly those who have been historically underserved.

We commit to partnering with our community to co-design student-centered systems that best match our region's needs and values, even as they change.

In our innovation and decision-making processes, we will actively seek the voices and partnership of our stakeholders.

We honor the different political beliefs, social values, and lived experiences our students, families, and staff bring to our classrooms and district. We invite different values and viewpoints, as long as they do not promote racism, hate, or discrimination.

Find our Commitment to Equal Educational Opportunities and Equity Stance at [bls.fyi/excellence-and-equity](https://bls.fyi/excellence-and-equity)

### Instruction

#### *ELEMENTARY INSTRUCTION*

The elementary school core curriculum focuses on the subjects of language arts (including reading and writing), math, physical education, music/art/STEAM skills, while building community and relationships within the classroom. Additional content taught and integrated into the core subjects include science, social science, and health. Literacy and math instruction is a critical part of every elementary student's academic development, so principals and teachers are encouraged to structure the school day so that literacy and math instruction is a priority. Bend-La Pine Schools also strives to provide additional academic support for students who need it.

#### *MIDDLE SCHOOL INSTRUCTION*

Middle school students have unique needs and require special attention during their transitional years. These students vary in physical, intellectual, psychological and emotional development. To meet these needs, middle schools strive to provide high academic expectations for all, to develop positive attitudes toward learning and future readiness, and to transition successfully between elementary and high school.

#### *HIGH SCHOOL INSTRUCTION*

High schools offer core classes as well as a variety of electives. Many classes provide students the opportunity to earn college credits and develop career-oriented skills while in high school. Our high school course catalog is available on each school's website. Students have the opportunity to earn an Honors Diploma by taking four years of math and science and participating in advanced placement, college dual credit and/or International Baccalaureate coursework. High schools also offer a wide range of academic clubs and co-curricular activities from music to drama and sports.

#### *SPECIAL EDUCATION*

Bend-La Pine Schools offers a variety of individualized programs and services to meet the unique gifts and challenges of the students in our district. We provide a full continuum of special education services and placements for qualifying students ages 5-21. Most of the services are offered in students' neighborhood schools and general education classrooms. District and off campus alternative programs are also available.

For more information about the services offered through the Special Programs Department, call 541-355-1060.

# 2025-26 ABOUT US

Bend-La Pine  
by the Numbers



## ABOUT OUR STUDENTS

- 16,700 Enrolled
- 78% White
- 14% Hispanic/Latino
- 5% Multiracial
- 1.2% Asian
- 0.7% Black
- 12.5% Students with disabilities
- 5% English language learners
- 40 Languages spoken
- 21% Experiencing poverty
- 4% Lack stable housing
- 23% Served by Family Access Network



## OUR GRADUATES

- 85.3% Graduation Rate (2024)
- 35% Earned Honors Diploma (2025)
- 9% Earned Seal of Biliteracy/Multiliteracy (2025)
- 40% Took AP courses with passing grade
- 70% College-bound
- 18% Workforce, Apprenticeship, Trade School or Military



## ABOUT OUR STAFF

- 1789 Employees
- 2nd Largest Employer in Central Oregon
- 981 Teachers/Certified Staff
- 14 Years Average Experience for Teachers
- 49 National Board Certified Teachers
- 808 Support Staff



## SCHOOLS

- 16 Elementary (K-5)
- 3 Magnet (Elementary)
- 2 K-8
- 7 Middle (6-8)
- 7 High (9-12)



## ACADEMIC PATHWAYS

- 1,275 5th graders attend Outdoor School
- 820 In Spanish Dual Immersion (K-12)
- 34 Career Technical Education programs
- 33 AP Courses
- 30 IB Courses (Bend Senior High)
- 42 College Dual Credit Courses (COCC + others)





# 2025-26 BACK TO SCHOOL BASICS

## ENROLLMENT

New to Bend-La Pine Schools? We can't wait to meet you! Go to [bls.fyi/enrollment2025](https://bls.fyi/enrollment2025) to begin your enrollment process.

## FIRST DAY OF SCHOOL

Wednesday, September 3 – 1st Day for grades 1-6, 9  
Thursday, September 4 – 1st Day for grades 7-8, 10-12  
Friday, September 5 – 1st Day for all kinders\*

\* Kindergarten start is staggered, with half attending on 9/3, the other half attending on 9/4, and the whole group coming together on 9/5. Your school will communicate your start date to you.

## BELL SCHEDULE

- Elementary: 7:45 a.m. – 2:15 p.m.
- Middle: 8:45 a.m. – 3:45 p.m.
- High: 8:45 a.m. – 3:45 p.m.
- Three Rivers School: 8:00 a.m. – 2:30 p.m.
- Westside Village: 8:35 a.m. – 3:35 p.m.

## SCHOOL IMPROVEMENT WEDNESDAYS

Beginning September 10, students will be released 90 minutes early every Wednesday. This is an important time for your child's teacher to improve student learning and achievement through collaboration, training, enrichment, and professional growth. When teachers have the weekly opportunity to discuss effective teaching methods, cooperatively design teaching materials, and coach one another, our schools make significant improvements.

## SCHOOL CLOSURES

The school year calendar is designed to meet instructional hour requirements set by the State of Oregon. The district has designated five dates (February 16, June 15, 16, 17, 18) as potential makeup school days for extended school closures resulting from circumstances such as inclement weather or emergencies. Accordingly, the school calendar is subject to change during the school year as circumstances warrant. Any updates to the school calendar can be found at our website.

## SCHOOL SUPPLIES

In Bend-La Pine Schools, all of the materials students need for instruction are provided. Families are welcome to provide personal items such as backpacks, water bottles, and headphones.



## HOLIDAYS & BREAKS

Sept 1.....	Labor Day
Sept 3.....	1st Day of School, Grades 1-6, 9
Sept 4.....	1st Day of School, Grades 7-8, 10-12
Sept 5.....	1st Day of School, all Kinders
Oct 29-31.....	No school elementary/middle school students
Nov 11.....	Veterans Day Holiday
Nov 24-28.....	Fall Break
Dec 5.....	No school BTA, La Pine HS, and Realms MS & HS
Dec 22-Jan 2.....	Winter Break
Jan 19.....	Martin Luther King Jr. Day Holiday
Jan 30.....	No school except BTA and LPHS
Feb 16*.....	Presidents' Day Holiday
Mar 13.....	No school BTA, LPHS, Realms
Mar 18-19.....	No school elementary/middle school students
Mar 20.....	No school, all students
Mar 23-27.....	Spring Break
May 25.....	Memorial Day Holiday
June 11.....	Last Day of School
June 19.....	Juneteenth
July 4.....	Independence Day
Feb 16*, June 15-18.....	Possible inclement weather make-up



Complete 2025-26  
School Calendar

# 2025-26



# BACK TO SCHOOL BASICS

## FAMILY ACCESS NETWORK (FAN)

If your family needs help securing a personal item, reach out to your school's FAN advocate for support. Your Family Access Network Advocate is here to assist all families with children, birth through graduation. If you have questions about Wi-Fi connectivity, Oregon Health Plan, food, rent, or utility help, reach out. Their goal is to make sure that your child has everything they need to be ready to learn. Go to [bls.fyi/fan](https://bls.fyi/fan).

## VISITORS AND VOLUNTEERS

If you plan on visiting your child's school, don't forget your government-issued photo ID. It must be shown at each and every school visit. You may be visiting for a concert, to enjoy lunch with your student, or to participate in an IEP meeting. Whatever the reason, safety procedures remain in place to keep our school community safe. All visitors must sign in at school during regular business hours using our Raptor kiosk, the digital sign-in roster. It is critical to know who is in our schools at all times, and no exceptions can be made in this process.



## ENGAGE WITH US

We want to hear from you! Use the Engage With Us button on our website to connect with school and district staff, ask questions, request information, submit a safety tip, and offer feedback.



## EMERGENCY AND SAFETY

Safe schools are fundamental to the success of students in Bend-La Pine Schools. Our District Safety Team takes a comprehensive approach to safety hazards that is modeled on the five phases of emergency management: prevention, mitigation, preparedness, response, and recovery.

Bend-La Pine Schools participates in the I Love U Guys Foundation, a research-based crisis response program, to train staff and students on how to respond to varying levels of emergencies. Our district works to comply with state-mandated training requirements while ensuring students and staff feel safe and empowered to make decisions.

Bend-La Pine Schools views safety as a shared responsibility between our District Safety Team, staff members, families, and community partners. One of the most vital community partnerships is our School Resource Officer Program with the Bend Police Department and Deschutes County Sheriff's Department. We encourage open dialogue with families who have safety concerns or are looking for information on our district safety measures.

We look forward to a wonderful year continuing to build an environment where all students feel safe and can achieve their goals!

## STAY CONNECTED

Stay in the loop regarding all important information. Sign up for BLConnect, an emergency alert text messaging system. Register at [bls.fyi/blconnect](https://bls.fyi/blconnect).



# 2025-26 🍎 BACK TO SCHOOL BASICS

## MORE WAYS TO STAY CONNECTED

Visit our website: [bend.k12.or.us](https://bend.k12.or.us)

- Visit our social media pages:
- Facebook English: @BendLaPineSchools
- Facebook Spanish: @EscuelasdeBendLaPine
- Instagram: @BendLaPineSchools
- Nextdoor: @BendLaPineSchools

Read our district newsletter - Family Spotlight



## MEALS

All schools in the District qualify for the federal Community Eligibility Provision program. All students are eligible to receive one free breakfast and one free lunch each school day. No application is required.

Daily menus including nutritional information and allergens can be found on our website. Parents/guardians of students with special dietary needs may reach out to their school nurse.



## TRANSPORTATION

Is your student riding a bus this year? Bus routes can be found at [bls.fyi/bus](https://bls.fyi/bus). New and returning riders need to be registered to ride before the first week of school. Log into your ParentVUE account and use the Online Registration tool.

Visit [bls.fyi/bus](https://bls.fyi/bus) to learn about the app that sends push notifications to your mobile device for school bus updates.

## WELLNESS CHECKS

Parents/guardians of athletes and non-athletes alike are encouraged to consider an annual Wellness Check – a complete medical examination and screen for common health issues. Wellness Check visits are vital to children's healthy growth and development. Physicians suggest adolescents should have regular wellness visits to make sure they are developing at the expected pace and continue to remain healthy.

During these visits, families may have the opportunity to discuss a child's growth, development, behavior and other health issues with the goal of preventing illness and promoting the best possible health for students.

Note: Families that would like to include a sports physical at a student's wellness check can simply request completion of the OSAA Athletics Form.

## HEALTHY SCHOOL COMMUNITIES

Help keep our school communities healthy and know when to keep your child at home. For health guidance, go to [bls.fyi/HealthInfo](https://bls.fyi/HealthInfo). You will also find information about medication use, injury, student mental health, and more.

## IMMUNIZATIONS

Parents/guardians must provide a student's proof of compliance with Oregon immunization laws before enrolling or continuing attendance. For more information, visit [bls.fyi/immunizationinfo](https://bls.fyi/immunizationinfo).

## INSURANCE

Are you covered? Bend-La Pine Schools does not carry accident insurance for students. This means that you are responsible for the medical bills if your child gets hurt during school activities. As a service to you and your child, Bend-La Pine Schools does provide access to a voluntary, low-cost student accident and sickness insurance program that families may purchase through Myers-Stevens & Toohey, Inc. Learn more at [bls.fyi/insurance](https://bls.fyi/insurance).

## SUICIDE PREVENTION

Bend-La Pine Schools has a comprehensive suicide prevention, intervention, and postvention plan. Each school/program has staff trained to screen for suicide and procedures on how to respond, which always includes communication with the parent/guardian. For more information, go to our Suicide Prevention Protocol at [bls.fyi/adis-act](https://bls.fyi/adis-act).



## STUDENT CODE OF CONDUCT

Bend-La Pine Schools administers policies adopted by its Board of Directors as well as administrative policies and regulations to ensure the fair treatment of students, families and the public, and the orderly operation of schools. The District's Student Code of Conduct, available at [bls.fyi/codeofconduct](https://bls.fyi/codeofconduct), outlines the rights and responsibilities of students, families and guardians, and educators and school personnel. The District strives to enforce all policies, administrative regulations, and practices consistently, fairly, and without bias. Please review the Student Code of Conduct to be familiar with these rights, responsibilities, policies and regulations.



Additional important information for students and families is available on our District website in Policy Governance, including student educational records and disclosure, non-discrimination, custody and parenting time, and security video. Use the QR code below to search policies.



## ATHLETIC CODE OF CONDUCT

Any student who participates in school-sponsored athletics or activities must sign a contract to abide by District Administrative Policies and Rules, Athletic Code of Conduct, building rules and team participation/training regulations. All students who participate in athletics and extracurricular activities are expected to be positive role models in their communities and beyond at all times. The signed participation contract shall be in effect at all times during the contract period, 24 hours a day, every day of the week whether at school or away from school. The contract will be in effect from the beginning of the OSAA calendar (see [osaa.org](https://osaa.org) annual dates) and conclude with the last day of school.



## SPORTS PHYSICALS

Students who participate in extracurricular sports must complete a physical exam. Sports physicals are valid for two years.

Parents/guardians should be sure to bring a copy of the OSAA School Sports Pre-Participation Examination form to be filled out by a health care provider at their student's appointment. These forms can be found on your school's Athletics webpage for download or at your Athletics and Activities Office.

Reminder: When you have completed the sports physical, please return it to your school's Athletics and Activities office.





## BEND-LA PINE EDUCATION FOUNDATION

Since 1988, the Bend-La Pine Education Foundation has served as an independent, nonprofit organization that includes parents, civic and business leaders, educators and concerned citizens who believe a vibrant K-12 public school system is essential to the social and economic well-being of our community. With guidance from the Foundation's Board of Directors, funding priorities are set to generate opportunities to engage students, parents, teachers and community partners in creating and participating in a well-rounded and robust learning environment.

The Education Foundation provides tools and financial resources that support schools, teachers and students through our programs that have an impact district-wide. Through volunteerism, donations, sponsorships and fundraising events we seek to sustain Foundation programs that are designed:

- To increase educational and extra-curricular opportunities for all district students
- To encourage creative and innovative curricula for STEM, art, music and wellness programs

Since 1988, the Education Foundation has invested more than \$2.4 million into our local public schools. For more information, visit [blpedfoundation.org](http://blpedfoundation.org).

Thanks to our wonderful community business partners and individual supporters, we work together to enhance K-12 education in Bend, La Pine and Sunriver.



**BLP Ed Foundation**

## FAMILY ACCESS NETWORK (FAN)

FAN advocates link children and families to critical basic need services with the goal of keeping children healthy and in school. FAN provides a direct and convenient way within the school to connect children to vital resources, and coordinates with over 100 partners to ensure those in need are assisted quickly. FAN advocates support our highest-needs families, removing barriers and paving the way for a child's success. Every year, FAN advocates improve the lives of nearly 8,000 children and family members in our community. Learn more at [bls.fyi/fan](http://bls.fyi/fan).

## BEND PARK AND RECREATION DISTRICT

Bend-La Pine Schools and the Bend Park & Recreation District have a long-term partnership focused on supporting students and families, through which we share resources and co-host a variety of programs. Notable joint efforts include the Kids Inc after-school program, On the Road to Kindergarten park registration tour, and the daily summer meal distribution program.

## BOYS & GIRLS CLUB OF BEND

Bend-La Pine Schools and Boys & Girls Club of Bend share a common goal of supporting youth in our community. The Boys & Girls Club downtown facility, originally the Bend High School gymnasium, serves as a hub for educational and enrichment opportunities and is the home of summer and after-school programs.



## CAMP FIRE CENTRAL OREGON

Camp Fire Central Oregon plays a pivotal role in support of our families, delivering after-school care and youth development opportunities for our elementary students. Their commitment to stepping in when needs arise has made them an invaluable partner in helping us ensure consistent support for our students beyond the school day.

Find more community partners at [bls.fyi/partners](http://bls.fyi/partners).





# SEPTEMBER

Liana, a senior at Summit High School, is looking forward to experiencing new adventures her senior year, broadening her achievements and education.

Turn to page 33 for September highlights

- Financial assistance with fees
- Cell phone and personal device policy



Sunday	Monday	Tuesday	Wednesday	Thursday	Friday	Saturday																																																	
<div>August 2025</div> <table> <tr><td>S</td><td>M</td><td>T</td><td>W</td><td>T</td><td>F</td><td>S</td></tr> <tr><td></td><td></td><td></td><td></td><td></td><td>1</td><td>2</td></tr> <tr><td>3</td><td>4</td><td>5</td><td>6</td><td>7</td><td>8</td><td>9</td></tr> <tr><td>10</td><td>11</td><td>12</td><td>13</td><td>14</td><td>15</td><td>16</td></tr> <tr><td>17</td><td>18</td><td>19</td><td>20</td><td>21</td><td>22</td><td>23</td></tr> <tr><td>24</td><td>25</td><td>26</td><td>27</td><td>28</td><td>29</td><td>30</td></tr> <tr><td>31</td><td></td><td></td><td></td><td></td><td></td><td></td></tr> </table>	S	M	T	W	T	F	S						1	2	3	4	5	6	7	8	9	10	11	12	13	14	15	16	17	18	19	20	21	22	23	24	25	26	27	28	29	30	31							Labor Day Holiday	No School	1st Day of School (Grades 1-6 and 9)  Staggered Kindergarten Start	1st Day of School (Grades 7-8 and 10-12)  Staggered Kindergarten Start	All students attend at all grade levels	
S	M	T	W	T	F	S																																																	
					1	2																																																	
3	4	5	6	7	8	9																																																	
10	11	12	13	14	15	16																																																	
17	18	19	20	21	22	23																																																	
24	25	26	27	28	29	30																																																	
31																																																							
1	2	3	4	5	6																																																		
7	8	9	10	11	12	13																																																	
14	15	16	17	18	19	20																																																	
21	22	23	24	25	26	27																																																	
28	29	30	<div>October 2025</div> <table> <tr><td>S</td><td>M</td><td>T</td><td>W</td><td>T</td><td>F</td><td>S</td></tr> <tr><td></td><td></td><td></td><td>1</td><td>2</td><td>3</td><td>4</td></tr> <tr><td>5</td><td>6</td><td>7</td><td>8</td><td>9</td><td>10</td><td>11</td></tr> <tr><td>12</td><td>13</td><td>14</td><td>15</td><td>16</td><td>17</td><td>18</td></tr> <tr><td>19</td><td>20</td><td>21</td><td>22</td><td>23</td><td>24</td><td>25</td></tr> <tr><td>26</td><td>27</td><td>28</td><td>29</td><td>30</td><td>31</td><td></td></tr> </table>	S	M	T	W	T	F	S				1	2	3	4	5	6	7	8	9	10	11	12	13	14	15	16	17	18	19	20	21	22	23	24	25	26	27	28	29	30	31											
S	M	T	W	T	F	S																																																	
			1	2	3	4																																																	
5	6	7	8	9	10	11																																																	
12	13	14	15	16	17	18																																																	
19	20	21	22	23	24	25																																																	
26	27	28	29	30	31																																																		





# OCTOBER

Sixth grader Noah looks back at his years at Highland Magnet School as an exciting time to explore the world through the Storyline method.

Turn to page 33 for October highlights

- Safety protocols
- Fall conferences



Sunday	Monday	Tuesday	Wednesday	Thursday	Friday	Saturday																																										
		<div>September 2025</div> <table> <tr><td>S</td><td>M</td><td>T</td><td>W</td><td>T</td><td>F</td><td>S</td></tr> <tr><td></td><td>1</td><td>2</td><td>3</td><td>4</td><td>5</td><td>6</td></tr> <tr><td>7</td><td>8</td><td>9</td><td>10</td><td>11</td><td>12</td><td>13</td></tr> <tr><td>14</td><td>15</td><td>16</td><td>17</td><td>18</td><td>19</td><td>20</td></tr> <tr><td>21</td><td>22</td><td>23</td><td>24</td><td>25</td><td>26</td><td>27</td></tr> <tr><td>28</td><td>29</td><td>30</td><td></td><td></td><td></td><td></td></tr> </table>	S	M	T	W	T	F	S		1	2	3	4	5	6	7	8	9	10	11	12	13	14	15	16	17	18	19	20	21	22	23	24	25	26	27	28	29	30					School Improvement     <b>1</b>	     <b>2</b>	     <b>3</b>	     <b>4</b>
S	M	T	W	T	F	S																																										
	1	2	3	4	5	6																																										
7	8	9	10	11	12	13																																										
14	15	16	17	18	19	20																																										
21	22	23	24	25	26	27																																										
28	29	30																																														
<b>5</b>	<b>6</b>	<b>7</b>	School Improvement     <b>8</b>	<b>9</b>	<b>10</b>	<b>11</b>																																										
<b>12</b>	<b>13</b>	<b>14</b>	School Improvement     <b>15</b>	<b>16</b>	No School Realms Middle and High EL educator development day	<b>18</b>																																										
<b>19</b>	<b>20</b>	<b>21</b>	School Improvement     <b>22</b>	<b>23</b>	<b>24</b>	<b>25</b>																																										
<b>26</b>	<b>27</b>	<b>28</b>	No School All Elementary and Middle School  School Improvement High School Only  <b>29</b>	No School All Elementary and Middle School  <b>30</b>	No School All Elementary and Middle School  <b>31</b>	<div>November 2025</div> <table> <tr><td>S</td><td>M</td><td>T</td><td>W</td><td>T</td><td>F</td><td>S</td></tr> <tr><td>2</td><td>3</td><td>4</td><td>5</td><td>6</td><td>7</td><td>1 8</td></tr> <tr><td>9</td><td>10</td><td>11</td><td>12</td><td>13</td><td>14</td><td>15</td></tr> <tr><td>16</td><td>17</td><td>18</td><td>19</td><td>20</td><td>21</td><td>22</td></tr> <tr><td>23</td><td>24</td><td>25</td><td>26</td><td>27</td><td>28</td><td>29</td></tr> <tr><td>30</td><td></td><td></td><td></td><td></td><td></td><td></td></tr> </table>	S	M	T	W	T	F	S	2	3	4	5	6	7	1 8	9	10	11	12	13	14	15	16	17	18	19	20	21	22	23	24	25	26	27	28	29	30						
S	M	T	W	T	F	S																																										
2	3	4	5	6	7	1 8																																										
9	10	11	12	13	14	15																																										
16	17	18	19	20	21	22																																										
23	24	25	26	27	28	29																																										
30																																																



# NOVEMBER

Bea, an 8th grader at Cascade Middle School, proudly brings her tuba and musical talents to the school band.

Turn to page 34 for November highlights

- Engage With Us
- Healthy Schools
- Inclement weather plans



Sunday	Monday	Tuesday	Wednesday	Thursday	Friday	Saturday								
			School Improvement			1								
						8								
2	3	4	5	6	7									
9	10	Veterans Day Holiday - No School	School Improvement	13	14	15								
16	17	18	School Improvement	20	21	22								
23	Fall Break - No School	Fall Break - No School	Fall Break - No School	Fall Break - No School	Fall Break - No School	29								
30	October 2025													
	December 2025													
	S	M	T	W	T	F	S	S	M	T	W	T	F	S
				1	2	3	4		1	2	3	4	5	6
	5	6	7	8	9	10	11	7	8	9	10	11	12	13
	12	13	14	15	16	17	18	14	15	16	17	18	19	20
	19	20	21	22	23	24	25	21	22	23	24	25	26	27
	26	27	28	29	30	31		28	29	30	31			



# DECEMBER

Eighth grader Lia loves her teachers and classes at Realms Middle School—especially the read-alouds in Humanities and learning to play a new instrument, the guitar.

Turn to page 34 for December highlights

- Winter resources
- Choice Option Schools



Sunday		Monday		Tuesday		Wednesday		Thursday		Friday		Saturday																																																	
<div>November 2025</div> <table><tr><td>S</td><td>M</td><td>T</td><td>W</td><td>T</td><td>F</td><td>S</td></tr><tr><td>2</td><td>3</td><td>4</td><td>5</td><td>6</td><td>7</td><td><div>18</div></td></tr><tr><td>9</td><td>10</td><td>11</td><td>12</td><td>13</td><td>14</td><td>15</td></tr><tr><td>16</td><td>17</td><td>18</td><td>19</td><td>20</td><td>21</td><td>22</td></tr><tr><td>23</td><td>24</td><td>25</td><td>26</td><td>27</td><td>28</td><td>29</td></tr><tr><td>30</td><td></td><td></td><td></td><td></td><td></td><td></td></tr></table>								S	M	T	W	T	F	S	2	3	4	5	6	7	<div>18</div>	9	10	11	12	13	14	15	16	17	18	19	20	21	22	23	24	25	26	27	28	29	30							1		2		3		4		5		6	
S	M	T	W	T	F	S																																																							
2	3	4	5	6	7	<div>18</div>																																																							
9	10	11	12	13	14	15																																																							
16	17	18	19	20	21	22																																																							
23	24	25	26	27	28	29																																																							
30																																																													
7								8		9		10		11		12		13																																											
14								15		16		17		18		19		20																																											
21								Winter Break - No School		Winter Break - No School		Winter Break - No School		Winter Break - No School		Winter Break - No School		27																																											
28								Winter Break - No School		Winter Break - No School		Winter Break - No School		<div>January 2026</div> <table><tr><td>S</td><td>M</td><td>T</td><td>W</td><td>T</td><td>F</td><td>S</td></tr><tr><td></td><td></td><td></td><td></td><td>1</td><td>2</td><td>3</td></tr><tr><td>4</td><td>5</td><td>6</td><td>7</td><td>8</td><td>9</td><td>10</td></tr><tr><td>11</td><td>12</td><td>13</td><td>14</td><td>15</td><td>16</td><td>17</td></tr><tr><td>18</td><td>19</td><td>20</td><td>21</td><td>22</td><td>23</td><td>24</td></tr><tr><td>25</td><td>26</td><td>27</td><td>28</td><td>29</td><td>30</td><td></td></tr></table>		S	M	T	W	T	F	S					1	2	3	4	5	6	7	8	9	10	11	12	13	14	15	16	17	18	19	20	21	22	23	24	25	26	27	28	29	30					
S	M	T	W	T	F	S																																																							
				1	2	3																																																							
4	5	6	7	8	9	10																																																							
11	12	13	14	15	16	17																																																							
18	19	20	21	22	23	24																																																							
25	26	27	28	29	30																																																								



# JANUARY

First grader Oliver brings joy to everyone at North Star Elementary during Forest School trips to Skyliner Lodge.

Turn to page 35 for January highlights

- Immunization Exclusion Day
- Forecasting
- YouthTruth survey



Sunday	Monday	Tuesday	Wednesday	Thursday	Friday	Saturday												
		December 2025							February 2026							Winter Break - No School	Winter Break - No School	
		S	M	T	W	T	F	S	S	M	T	W	T	F	S			
			1	2	3	4	5	6	1	2	3	4	5	6	7			
		7	8	9	10	11	12	13	8	9	10	11	12	13	14			
		14	15	16	17	18	19	20	15	16	17	18	19	20	21			
		21	22	23	24	25	26	27	22	23	24	25	26	27	28			
		28	29	30	31													
4	5	6					7							8	9	10		
11	12	13					14							15	16	17		
18	19	20					21							22	23	24		
25	26	27					28							29	30	31		

February 2026

SMTWTFSS

1

2

3

4

5

6

7

8

9

10

11

12

13

14

15

16

17

18

19

20

21

22

23

24

25

26

27

28

Winter Break

- No School

1

Winter Break

- No School

2

3



# FEBRUARY

Second grader Arlyss thrives at Pine Ridge Elementary, lifted by the support of caring staff, good friends, and a trusty stuffed chameleon in the Den.

Turn to page 35 for February highlights

- ParentVUE
- State assessments



Sunday							Monday							Tuesday							Wednesday							Thursday							Friday							Saturday						
1							2							3							4							5							6							7						
8							9							10							11							12							13							14						
15							16							17							18							19							20							21						
22							23							24							25							26							27							28						
January 2026							March 2026																																									
S	M	T	W	T	F	S	S	M	T	W	T	F	S																																			
				1	2	3	1	2	3	4	5	6	7																																			
4	5	6	7	8	9	10	8	9	10	11	12	13	14																																			
11	12	13	14	15	16	17	15	16	17	18	19	20	21																																			
18	19	20	21	22	23	24	22	23	24	25	26	27	28																																			
25	26	27	28	29	30	31	29	30	31																																							



# MARCH

Second grader David brings a spirit of adventure to the playground at Buckingham Elementary, creating his own path as he explores and plays.

Turn to page 36 for March highlights

- Fly-ups and family nights
- Spring conferences



Sunday	Monday	Tuesday	Wednesday	Thursday	Friday	Saturday												
1	2	3	School Improvement 4	5	6	7												
8	9	10	School Improvement 11	12	No School BTA, La Pine High and Realms Middle and High 13	14												
15	16	17	No School Elementary and middle school 18	No School Elementary and middle school 19	No School All students 20	21												
22	Spring Break - No School 23	Spring Break - No School 24	Spring Break - No School 25	Spring Break - No School 26	Spring Break - No School 27	28												
29	30	31	February 2026				April 2026											
			S	M	T	W	T	F	S	S			M	T	W	T	F	S
			1	2	3	4	5	6	7						1	2	3	4
			8	9	10	11	12	13	14	5			6	7	8	9	10	11
			15	16	17	18	19	20	21	12			13	14	15	16	17	18
			22	23	24	25	26	27	28	19			20	21	22	23	24	25
										26			27	28	29	30		



# APRIL

Eighth grader Gauge, from Pilot Butte Middle School, is a beloved part of the school community, where he's spreading his wings and expressing himself through his unique style, love for old cars, and passion for guitar.

Turn to page 36 for April highlights

- Safe transportation
- Kindergarten registration



Sunday	Monday	Tuesday	Wednesday	Thursday	Friday	Saturday																																																	
		<div>March 2026</div> <table> <tr><td>S</td><td>M</td><td>T</td><td>W</td><td>T</td><td>F</td><td>S</td></tr> <tr><td>1</td><td>2</td><td>3</td><td>4</td><td>5</td><td>6</td><td>7</td></tr> <tr><td>8</td><td>9</td><td>10</td><td>11</td><td>12</td><td>13</td><td>14</td></tr> <tr><td>15</td><td>16</td><td>17</td><td>18</td><td>19</td><td>20</td><td>21</td></tr> <tr><td>22</td><td>23</td><td>24</td><td>25</td><td>26</td><td>27</td><td>28</td></tr> <tr><td>29</td><td>30</td><td>31</td><td></td><td></td><td></td><td></td></tr> </table>	S	M	T	W	T	F	S	1	2	3	4	5	6	7	8	9	10	11	12	13	14	15	16	17	18	19	20	21	22	23	24	25	26	27	28	29	30	31					School Improvement										
S	M	T	W	T	F	S																																																	
1	2	3	4	5	6	7																																																	
8	9	10	11	12	13	14																																																	
15	16	17	18	19	20	21																																																	
22	23	24	25	26	27	28																																																	
29	30	31																																																					
			1	2	3	4																																																	
5	6	7	8	9	10	11																																																	
12	13	14	15	16	17	18																																																	
19	20	21	22	23	24	25																																																	
26	27	28	29	30	<div>May 2026</div> <table> <tr><td>S</td><td>M</td><td>T</td><td>W</td><td>T</td><td>F</td><td>S</td></tr> <tr><td></td><td></td><td></td><td></td><td></td><td>1</td><td>2</td></tr> <tr><td>3</td><td>4</td><td>5</td><td>6</td><td>7</td><td>8</td><td>9</td></tr> <tr><td>10</td><td>11</td><td>12</td><td>13</td><td>14</td><td>15</td><td>16</td></tr> <tr><td>17</td><td>18</td><td>19</td><td>20</td><td>21</td><td>22</td><td>23</td></tr> <tr><td>24</td><td>25</td><td>26</td><td>27</td><td>28</td><td>29</td><td>30</td></tr> <tr><td>31</td><td></td><td></td><td></td><td></td><td></td><td></td></tr> </table>	S	M	T	W	T	F	S						1	2	3	4	5	6	7	8	9	10	11	12	13	14	15	16	17	18	19	20	21	22	23	24	25	26	27	28	29	30	31							
S	M	T	W	T	F	S																																																	
					1	2																																																	
3	4	5	6	7	8	9																																																	
10	11	12	13	14	15	16																																																	
17	18	19	20	21	22	23																																																	
24	25	26	27	28	29	30																																																	
31																																																							



# MAY

Santiago, a 5th grader at Rosland Elementary, spreads kindness wherever he goes, sharing his love for music, his passion for soccer, and his ever-present smile.

Turn to page 37 for May highlights

- Mental Health Awareness Month
- Wayfinder



Sunday	Monday	Tuesday	Wednesday	Thursday	Friday	Saturday												
			April 2026							June 2026							1	2
			S	M	T	W	T	F	S	S	M	T	W	T	F	S		
						1	2	3	4		1	2	3	4	5	6		
			5	6	7	8	9	10	11	7	8	9	10	11	12	13		
			12	13	14	15	16	17	18	14	15	16	17	18	19	20		
			19	20	21	22	23	24	25	21	22	23	24	25	26	27		
			26	27	28	29	30			28	29	30						
						School Improvement												
3	4	5	6							7							8	9
			School Improvement															
10	11	12	13							14							15	16
			School Improvement															
17	18	19	20							21							22	23
24	Memorial Day Holiday - No School		School Improvement															
31																		
	25	26	27							28							29	30



# JUNE

Jack, a 4th grader at High Lakes Elementary, can often be found with a baseball glove in one hand and big-league dreams in the other.

Turn to page 37 for June highlights

- Graduation season
- Summer meals



Sunday	Monday	Tuesday	Wednesday	Thursday	Friday	Saturday										
	1	2	School Improvement 3	Mountain View High Graduation 4	La Pine High Graduation 5	Caldera High Graduation Bend Senior High Graduation Summit High Graduation 6										
7	Bend Tech Academy Graduation 8	Realms High Graduation 9	10	Last Day of School 11	12	13										
14	Potential Inclement Weather Makeup Day 15	Potential Inclement Weather Makeup Day 16	Potential Inclement Weather Makeup Day 17	Potential Inclement Weather Makeup Day 18	Juneteenth Holiday 19	20										
21	22	23	24	25	26	27										
28	29	30	May 2026				July 2026									
			S	M	T	W	T	F	S	S	M	T	W	T	F	S
								1	2				1	2	3	4
			3	4	5	6	7	8	9	5	6	7	8	9	10	11
			10	11	12	13	14	15	16	12	13	14	15	16	17	18
			17	18	19	20	21	22	23	19	20	21	22	23	24	25
			24 31	25	26	27	28	29	30	26	27	28	29	30	31	



# JULY

La Pine High School senior Emily is actively involved in Career Technical Education (CTE), serves as a counselor for 5th grade programs, and has dedicated herself to a future in military service.

Turn to page 38 for July highlights

- Summer learning
- Neighborhood safety



Sunday	Monday	Tuesday	Wednesday	Thursday	Friday	Saturday																																										
		<div>June 2026</div> <table> <tr><td>S</td><td>M</td><td>T</td><td>W</td><td>T</td><td>F</td><td>S</td></tr> <tr><td></td><td>1</td><td>2</td><td>3</td><td>4</td><td>5</td><td>6</td></tr> <tr><td>7</td><td>8</td><td>9</td><td>10</td><td>11</td><td>12</td><td>13</td></tr> <tr><td>14</td><td>15</td><td>16</td><td>17</td><td>18</td><td>19</td><td>20</td></tr> <tr><td>21</td><td>22</td><td>23</td><td>24</td><td>25</td><td>26</td><td>27</td></tr> <tr><td>28</td><td>29</td><td>30</td><td></td><td></td><td></td><td></td></tr> </table>	S	M	T	W	T	F	S		1	2	3	4	5	6	7	8	9	10	11	12	13	14	15	16	17	18	19	20	21	22	23	24	25	26	27	28	29	30					1	2	3	4
S	M	T	W	T	F	S																																										
	1	2	3	4	5	6																																										
7	8	9	10	11	12	13																																										
14	15	16	17	18	19	20																																										
21	22	23	24	25	26	27																																										
28	29	30																																														
5	6	7	8	9	10	11																																										
12	13	14	15	16	17	18																																										
19	20	21	22	23	24	25																																										
26	27	28	29	30	31	<div>August 2026</div> <table> <tr><td>S</td><td>M</td><td>T</td><td>W</td><td>T</td><td>F</td><td>S</td></tr> <tr><td>2</td><td>3</td><td>4</td><td>5</td><td>6</td><td>7</td><td>1 8</td></tr> <tr><td>9</td><td>10</td><td>11</td><td>12</td><td>13</td><td>14</td><td>15</td></tr> <tr><td>16</td><td>17</td><td>18</td><td>19</td><td>20</td><td>21</td><td>22</td></tr> <tr><td>23</td><td>24</td><td>25</td><td>26</td><td>27</td><td>28</td><td>29</td></tr> <tr><td>30</td><td>31</td><td></td><td></td><td></td><td></td><td></td></tr> </table>	S	M	T	W	T	F	S	2	3	4	5	6	7	1 8	9	10	11	12	13	14	15	16	17	18	19	20	21	22	23	24	25	26	27	28	29	30	31					
S	M	T	W	T	F	S																																										
2	3	4	5	6	7	1 8																																										
9	10	11	12	13	14	15																																										
16	17	18	19	20	21	22																																										
23	24	25	26	27	28	29																																										
30	31																																															

Independence Day  
Holiday



# AUGUST

Brody, a senior at Bend Senior High, is dedicated to weightlifting and fitness, inspiring those around him with his commitment to school pride and community.

Turn to page 38 for August highlights

- Get ready for back-to-school!
- Sports physicals and wellness checks



Sunday	Monday	Tuesday	Wednesday	Thursday	Friday	Saturday									
						1									
						8									
2	3	4	5	6	7										
9	10	11	12	13	14	15									
16	17	18	19	20	21	22									
23	24	25	26	27	28	29									
30	31	July 2026													
		September 2026													
		S	M	T	W	T	F	S	S	M	T	W	T	F	S
					1	2	3	4			1	2	3	4	5
		5	6	7	8	9	10	11	6	7	8	9	10	11	12
		12	13	14	15	16	17	18	13	14	15	16	17	18	19
		19	20	21	22	23	24	25	20	21	22	23	24	25	26
		26	27	28	29	30	31		27	28	29	30			

September 2026

S

M

T

W

T

F

S

1

2

3

4

5

6

7

8

9

10

11

12

13

14

15

16

17

18

19

20

21

22

23

24

25

26

27

28

29

30



# SEPTEMBER



## Financial assistance

If your family needs assistance with exam fees, athletic participation fees, travel sports scholarships and other resources, please fill out the Family Income Survey and return it to your school office or Family Access Network (FAN) advocate. All information is confidential. To learn more about potential fee assistance and to access the application, go to [bls.fyi/FeeAssistance](https://bls.fyi/FeeAssistance).

## Cell phone and personal device policy

We believe the best way for students to engage in their learning is to limit distractions in the classroom. Restricting access to phones and personal electronics during the school day helps students focus on learning, engage with teachers and peers, and develop skills and habits for life beyond school.

Please be sure your student is aware of the following expectations for personal electronic devices:

**High School** - Students will silence their phones and place them in a classroom phone caddy at the beginning of each class period. Phones are to remain in the caddy until the class period is over.

**Elementary and Middle School** - Students are not permitted to have phones or wireless earbuds during the school day.

**Smartwatches** - Students are not permitted to use smartwatches to access mobile apps or the Internet, or to send and receive messages (text or call) during class periods.

We recognize that it can be challenging to manage personal device expectations. We are committed to working with students, families, and teachers to provide the best learning environment we can. Please call your school office if you have an urgent need to contact your student.

Regulations regarding personal devices are changing at the state level. Students may experience policy changes during the school year.



# OCTOBER



## Safety protocols

Threats to school safety can vary widely to include fires, earthquakes, nearby police activity, gas leaks, or even a wild animal roaming campus. Instead of having complicated responses that vary for incident type, our district follows the Standard Response Protocol (SRP) from the "I Love U Guys" Foundation.

The SRP is a data-driven approach to incident response that uses five actions for schools to take: hold, secure, lockdown, evacuate, and shelter. If staff or students observe something concerning, school employees are empowered to take initiative and respond individually in implementing SRP procedures based on the information they have at the moment. Information may change, and therefore, the SRP actions might change.

Hold is used to clear a space in the school such as a hallway or classroom to keep students away from a hazard. Lockdown is used to secure individual rooms and keep occupants quiet and in place during a threat or other emergency. Secure is used to safeguard people within the building. Everyone remains inside, and outside doors are locked. No one is allowed to enter the building when Secure is in place. Evacuation is used to move people from one location to a different location in or out of the building. Shelter is used to secure students and staff away from a natural hazard.

For more information about our safety resources, go to [bls.fyi/safety](https://bls.fyi/safety).

## Fall conferences

Elementary and middle school students do not have school October 29 - 31. Certified staff are taking that time to prepare for and conduct conferences with families.

Make the most of your conference time with your child and teacher. Write down questions and ask your student if they have questions they'd like you to ask. Be ready to collaborate with your teacher on how to support your child at home. And talk to your child about what you learned from the time together in the classroom.





# NOVEMBER



## Engage With Us

We want to hear from you! Go to [bls.fyi/EngageWithUs](https://bls.fyi/EngageWithUs) to contact school and district staff, ask questions, request records and other information, contact our School Board, look up policy, gather feedback and more.

## Healthy Schools

The Healthy Schools partnership with Deschutes County weaves public health programs into our school systems, promoting the importance of mental health support and interventions and creating a more nurturing learning environment.

The mission of Healthy Schools is to provide public health services directly within schools and school communities using collaborative, systemic, and integrative approaches so that students, families, and school staff in Deschutes County have access to high quality health programs.

## Inclement weather plans

During severe weather events, the District sends drivers out early in the morning to evaluate road conditions in the Bend, La Pine and Sunriver areas. We also check on state, county and city road-clearing operations and monitor weather forecasts.

If we decide to delay school start times by two hours, or to close schools for the day, we strive to announce the decision no later than 5:30 a.m. If there is no change in normal operations, we do not make an announcement.

The best ways to get the latest information is from our website at [bls.fyi/InclementWeather](https://bls.fyi/InclementWeather).



# DECEMBER



## Mental health resources

For many, the holidays are a joyful time for creating memories with family and friends. It also comes with stress and challenges. It's okay to ask for help, and support is available.

- 988: If you or someone you love is struggling with thoughts of suicide, call or text 988. You are not alone.
- YouthLine is a free and confidential teen-to-teen help line. Go to [theyouthline.org](https://theyouthline.org) for contact information via phone, text, chat, and email. Teens are available to help daily 4-10 p.m. PT (adults are available by phone at all other times).
- Care Solace supports the well-being of our community and can help you quickly find treatment options matched to your needs, regardless of the circumstance. Call 888-515-0595 or visit [caresolace.com/bls](https://caresolace.com/bls).
- SafeOregon allows students and families to report information that involves students, the safety of their fellow students or their school 24-hours-a-day. Visit [SafeOregon.com](https://SafeOregon.com).

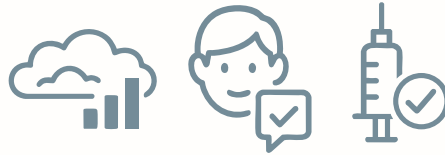
## Choice Option Schools

Bend-La Pine Schools' choice options provide learning opportunities that are significantly different from our traditional programs, while meeting the same standards and requirements as other schools within the district. From Dual Immersion to Career Technical Education, the choice option schools have many programs to meet the individual focus of its students.

Enrollment for the 2026-27 school year opens January 2, 2026. Entry into the Choice Options lottery, Dual Immersion lottery, and Priority Area Change Requests all require a current enrollment into Bend-La Pine Schools for the school year requested. Learn more about our schools at [bls.fyi/options2026](https://bls.fyi/options2026).



# JANUARY



## Forecasting

Forecasting season is here! This is the process – usually taking place from late winter to early spring – in which students in grades 5-11 choose and request classes for the upcoming school year. The process may vary by grade level, but students will use resources like the curriculum guide, discussions with current teachers, counselors, and family to make informed course selections for the next school year.

Forecasting is essential for creating the school schedule and planning staffing for the school year. As a result, schedule changes are limited and allowed only for specific reasons. Therefore, we encourage students and families to carefully consider their course selections.

## YouthTruth survey

In January, you have the opportunity to provide feedback about your school and your student's experience. It's all in an effort to grow better academic outcomes and improved well-being for our school communities. Families will be emailed an invitation to take the anonymous online survey conducted by YouthTruth – a nonprofit organization that supports hundreds of schools and districts across the country. The survey takes approximately 15 minutes to complete and closes January 31.

## Immunization Exclusion Day

Is your student up to date with their immunizations? Oregon's immunization exclusion day is February 18, 2026. Immunizations are required by state law for children and students in attendance at public and private schools, preschools, childcare facilities and Head Start programs. Each year in January and February, all schools and childcare facilities in Oregon must report the immunization status of their students to the Health Department. Children must have all state required immunizations, or a medical or a non-medical exemption, to stay enrolled. To learn more, go to [bls.fyi/ImmunizationInfo](https://bls.fyi/ImmunizationInfo).



# FEBRUARY



## ParentVUE

If you are new to Bend-La Pine Schools, you'll soon be using ParentVUE, our parent web portal to student information. You can view grades, assignments, attendance, and other relevant information about your student's education progress.

- Parents of secondary students will have access to grades, report cards, attendance, assignments, their student's current Individualized Education Program (IEP), and progress reports.
- Parents of elementary students will have access to attendance, report cards, their student's current IEP, progress reports and school announcements.

Please check with your student's school for their preferred tool.

## State Assessment

Every spring, students across the district take part in Oregon's annual student assessments, part of the Oregon Statewide Assessment System. They include summative tests in English language arts, math, and science for specific grade levels.

Students in grades 3-8 and 11 take annual state assessments to measure student achievement and growth. Schools and districts use this information to identify areas of strength and area for improvement. The assessments also inform teachers of specific student needs, whether it is the need for additional support and resources or enrichment.





# MARCH



## Fly-ups and family nights

Students entering middle and high school during the 2026-27 school year get engaging opportunities to start the big move and meet their new school communities.

Career and Technical Education (CTE) and Elective Exploration Fly-Up Day gives 8th-grade students an opportunity to learn about the CTE pathways and rich elective options offered in their high schools by exploring technical skills, creative pursuits, and other options to spark their curiosity and excitement prior to forecasting.

Evening events are also planned for incoming 6th and 9th-grade families to meet student leaders and staff, explore co-curricular programs and clubs, learn about high school forecasting, and have some fun with their future school community.

## Spring conferences

Spring conferences, which have traditionally taken place in mid-April, are now just before spring break.

- March 18-19, 2026: No school for elementary and middle school students
- March 20, 2026: No school for all students
- March 23-27, 2026: Spring break

Scheduling conferences and spring break back-to-back creates eight weeks of consistent learning days for students, from the end of spring break to the last day of school.

Conferences remain an important time for families and teachers to connect. It's an opportunity to stay engaged with your student's teachers and learn ways to support their success at school and at home.



# APRIL



## Kindergarten registration

Do you know someone on the road to kindergarten in the 2026-27 school year? Learn more about their new school journey in a park near you!

Check the district calendar to find out the April date for On the Road to Kindergarten. The big yellow school bus will tour neighborhood parks with all the kindergarten details you need to know. Families with new kindergarten students can stop by and learn about registering for the new year, register on the spot, or find out when to visit your child's school.

In order to be eligible for kindergarten beginning in 2026, students must be 5 years old on or before September 1, 2026. Everything you need to know is available at [bls.fyi/kindergarten](https://bls.fyi/kindergarten).

## Transportation safety

Safety is a primary concern as we return to spring weather. That begins with all of us doing our part to make sure students have safe ways to travel to and from school, whether by bike or scooter, or on foot.

- Drivers, slow down and watch for students making their way to buses, walking or rolling to school, and crossing streets and parking areas.
- Find safe and convenient walking/biking routes to many of our schools at [commuteoptions.org/safe-routes-to-school](https://commuteoptions.org/safe-routes-to-school).
- Reminder! Students 16 and older legally may operate e-bikes in Oregon. Anyone under 16 may not, according to state law.
- Always wear a helmet and watch your speed. And please dismount and walk your wheels when on school property.



# MAY



## Mental Health Awareness Month

Mental health matters. Many people around us are struggling, and they deserve care, understanding, and support. By having open, compassionate conversations, we can break the stigma and create a culture of support.

If you or someone you know needs help, Care Solace is here. This complimentary and confidential mental health care coordination service, provided by Bend-La Pine Schools, can help connect you with a provider quickly and easily:

- Call 888-515-0595 for multilingual support, available 24/7/365.
- Visit [caresolace.com/bls](https://caresolace.com/bls) to search for a provider or click "Book Appointment" for personalized assistance via video chat, email, or phone.

## Wayfinder

Wayfinder helps provide a learning environment that nurtures students' academic growth and fosters critical thinking, a sense of purpose, and future-ready skills to connect classroom learning to the real world.

- Elementary students learn to build community and foster relationships in the classroom and beyond.
- In middle school, students explore their strengths and begin to focus on career-ready skills through their Advisory period.
- High school students set goals for future-ready skills and approach post-secondary life with confidence.

Wayfinder is designed to complement the existing curriculum without replacing any essential academic content. It is introduced through age-appropriate activities, discussions, and interactive experiences to foster a positive and engaging learning environment that promotes academic success.



# JUNE



## Graduation ceremonies

It's graduation season and time to celebrate our remarkable Class of 2026! If you are attending a graduation ceremony, here are a few things to know:

- In the event of lightning or poor air quality, the event may be postponed or moved indoors. The decision is made by our administrators using Oregon School Activities Association guidelines.
- You will find parking, transportation, and designated seating available for ADA needs at all ceremonies. Dogs are not allowed unless they are registered service animals.
- Language interpretation will be provided as needed.

We look forward to celebrating your student!

## Summer meals

Have you heard the news? Bend-La Pine Schools provides kids with free, nutritious meals all summer.

Starting not long after the last day of school, we offer healthy meals at no charge to children and teens at outdoor locations in Bend and La Pine. The program is open to anyone 18 and younger.

There is no registration or fee. Parents and guardians are encouraged to attend with their children and may purchase a meal for themselves for \$5.50. For locations and times, visit [bls.fyi/summermeals](https://bls.fyi/summermeals).





# JULY



## Summer learning

Summertime means a break from school, but it shouldn't mean a break from learning. We encourage students and families to stay engaged with learning over the course of the summer. Students who don't participate in educational activities over the summer can experience summer learning loss, sometimes called the summer slide.

We hope all our families can find fun ways to keep kids engaged and thinking this summer.

Learning during the summer doesn't have to mirror the classroom. Simple, everyday activities can help keep students engaged:

- Explore the math and reading resources shared by our teachers.
- Read together regularly.
- Visit your local library.
- Ask questions to spark conversation and curiosity.
- Cook together and have your child follow the recipe and handle measurements.

We hope your family enjoys a fun, enriching summer. We look forward to welcoming everyone back in September!

## SafeOregon Tipline

SafeOregon is a reporting tool that can be used by anyone via phone call or website form to report a student safety concern. Examples of student safety concerns include vandalism, cyberbullying, suicidal ideation, insufficient food or safety concerns at home, or anything that poses a risk to the safety of a student(s) or school facility. Reporters can share their information or remain anonymous. Bend-La Pine Schools staff uses this reported information to coordinate with our law enforcement partners to keep the school community safe.

SafeOregon tips are still monitored during the summer months.



# AUGUST



## Wellness checks and sports physicals

Parents/guardians of athletes and non-athletes alike are encouraged to consider an annual Wellness Check – a complete medical examination and screen for common health issues.

Wellness Check visits are vital to children's healthy growth and development. Physicians suggest adolescents should have regular wellness visits to make sure they are developing at the expected pace and continue to remain healthy.

Students who participate in extracurricular sports must complete a physical exam. Sports physicals are valid for two years.

## Get ready!

As the new school year approaches, now is a great time to begin preparing for a smooth and confident start. Here are five simple but effective ways parents can help set their children up for success:

- Reestablish routines. Begin shifting to earlier bedtimes and wake-up times to help ease the transition back to the school schedule.
- Create a learning space. Set up a quiet, organized area at home for reading and homework to support focus and good study habits.
- Refresh academic skills. Review basic math, reading, or writing for a few minutes each day to rebuild confidence and readiness.
- Talk about the school year. Discuss what to expect and check in on how your child is feeling about the transition back to school.
- Prepare together. Include your child in school events and orientations to help them feel connected and ready.

Bend-La Pine Schools  
An Educational Site of Administrative School District #1  
520 N.W. Wall St.  
Bend, OR 97703

Non-Profit  
Organization  
U.S. Postage  
**PAID**  
BEND, OR  
Permit No. 163

Elementary Schools

**Amity Creek at Thompson**

437 NW Wall St., Bend  
541-355-2800

**Bear Creek**

51 SE 13th St., Bend  
541-355-1400

**Buckingham**

62560 Hamby Road, Bend  
541-355-2600

**Elk Meadow**

60880 Brookwood Blvd., Bend  
541-355-1500

**Ensworth**

2150 NE Daggett Lane, Bend  
541-355-1600

**High Lakes**

2500 NW High Lakes Loop, Bend  
541-355-1700

**Highland at Kenwood**

701 NW Newport Ave., Bend  
541-355-1900

**Juniper**

1300 NE Norton Ave., Bend  
541-355-1800

**La Pine**

51615 Coach Road, La Pine  
541-355-8000

**Lava Ridge**

20805 Cooley Road, Bend  
541-355-2400

**North Star**

63567 Brownrigg Lane, Bend  
541-355-2300

**Pine Ridge**

19840 Hollygrape St., Bend  
541-355-2700

**Ponderosa**

3790 NE Purcell Blvd., Bend  
541-355-4300

**R. E. Jewell**

20550 Murphy Road, Bend  
541-355-2100

**Rosland**

52350 Yaeger Way, La Pine  
541-355-8100

**Silver Rail**

61530 SE Stone Creek St., Bend  
541-355-2900

**William E. Miller**

300 NW Crosby Drive, Bend  
541-355-2500

K-8 Schools

**Three Rivers (K-8)**

56900 Enterprise Dr., Sunriver  
541-355-3000

**Westside Village at Kingston (K-8)**

1101 NW 12th St., Bend  
541-355-2000

Middle Schools

**Cascade**

19619 Mountaineer Way, Bend  
541-355-7000

**High Desert**

61000 Diamondback Lane, Bend  
541-355-7200

**La Pine**

16360 First St., La Pine  
541-355-8200

**Pacific Crest**

3030 NW Elwood Lane, Bend  
541-355-7800

**Pilot Butte**

1501 NE Neff Road, Bend  
541-355-7400

**Realms**

20730 Brinson Blvd., Bend  
541-355-5500

**Sky View**

63555 18th St., Bend  
541-355-7600

High Schools

**Bend Senior**

230 NE 6th St., Bend  
541-355-3700

**Bend Tech Academy**

1291 NE 5th St., Bend  
541-355-3500

**Caldera**

60925 SE 15th St., Bend  
541-355-5400

**La Pine**

51633 Coach Road, La Pine  
541-355-8400

**Mountain View**

2755 NE 27th St., Bend  
541-355-4400

**Realms**

20730 Brinson Blvd., Bend  
541-355-5500

**Summit**

2855 NW Clearwater Dr., Bend  
541-355-4000